



KNIT | SKILL LEVEL: **INTERMEDIATE**

## ABBREVIATIONS

**Approx** = Approximate(ly)

**Dec** = Decrease(ing)

**K** = Knit

**Inc** = Increase(ing)

**Pat** = Pattern

**Rep** = Repeat

**RS** = Right side

**Sl1yb** = Slip next stitch purl-wise with yarn in back

**Sl1yf** = Slip next stitch purl-wise with yarn in front

**St(s)** = Stitch(es)

**WS** = Wrong side

## MEASUREMENTS

Approx 50 x 58½" [127 x 148.5 cm].

## GAUGE

8 sts and 20 rows = 4" [10 cm] in pat.

## INSTRUCTIONS

### Notes:

- Blanket is knit using "Mosaic" slip-stitch knitting technique. Each row is knit with one color only throughout.
- Contrast color is NOT carried along rows back of work. Colors are only changed at the beg of a row.
- Carry color not in use loosely up right side of work.

With B, cast on 94 sts. **Do not** join, working back and forth across needle in rows, proceed as follows:

**1st row:** (WS). With B, knit.

**2nd and 3rd rows:** With A, knit.

**4th row:** With B, knit.

Rep last 4 rows 3 times more then 1st row once, inc 5 sts evenly across last row. 99 sts.

Proceed in pat (multiple of 14 sts + edge sts) as follows: *See chart on page 2.*

**1st row:** (RS). With A, K7. \*(With A, K1. Sl1yb) 3 times. With A, K3. (Sl1yb. K1) twice. Sl1yb. Rep from \* to last 8 sts. With A, K8.

**2nd row:** With A, K8. \*(Sl1yf. With A, K1) 3 times. With A, K2. (Sl1yf. With A, K1) 3 times. Rep from \* to last 7 sts. With A, K7.

## MATERIALS

**Bernat® Blanket™** (10.5 oz/300 g; 220 yds/201 m)

**Contrast A** Orange Leaf (10907)      **3 balls or 484 yds/442 m**

**Contrast B** Vintage White (10006)      **3 balls or 484 yds/442 m**

Size U.S. 11 (8 mm) Susan Bates® Silvalume® circular knitting needle 40" [101.5 cm] long **or size needed to obtain gauge.**

**3rd row:** With B, K7. \*With B, K6. Sl1yb. With B, K1. Sl1yb. With B, K5. Rep from \* to last 8 sts. With B, K8.

**4th row:** With B, K8. \*With B, K5. Sl1yf. With B, K1. Sl1yf. With B, K6. Rep from \* to last 7 sts. With B, K7.

**5th row:** With A, K7. \*(With A, K1. Sl1yb) twice. With A, K7. Sl1yb. With A, K1. Sl1yb. Rep from \* to last 8 sts. With A, K8.

**6th row:** With A, K8. \*Sl1yf. With A, K1. Sl1yf. With A, K7. (Sl1yf. With A, K1) twice. Rep from \* to last 7 sts. With A, K7.

**7th row:** With B, K7. \*With B, K4. (Sl1yb. With B, K1) 4 times. With B, K2. Rep from \* to last 8 sts. With B, K8.

**8th row:** With B, K8. \*With B, K3. (Sl1yf. With B, K1) 4 times. With B, K3. Rep from \* to last 7 sts. With B, K7.

**9th row:** With A, K7. \*With A, K1. Sl1yb. With A, K11. Sl1yb. Rep from \* to last 8 sts. With A, K8.

**10th row:** With A, K8. \*Sl1yf. With A, K11. Sl1yf. With A, K1. Rep from \* to last 7 sts. With A, K7.

**11th row:** With B, K7. \*With B, K2. (Sl1yb. With B, K1) 6 times. Rep from \* to last 8 sts. With B, K8.

**12th row:** With B, K8. \*(With B, K1. Sl1yf) 6 times. With B, K2. Rep from \* to last 7 sts. With B, K7.

**13th and 14th rows:** With A, knit.

**15th to 28th rows:** As 1st to 14th rows, **reversing A and B**. These 28 rows form pat.

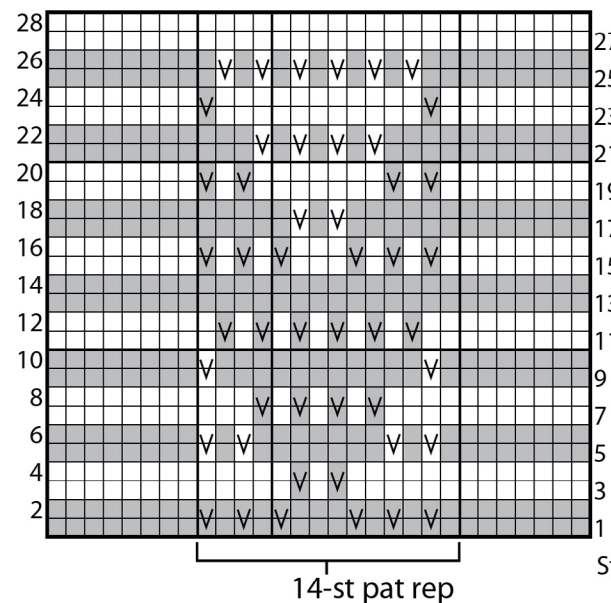
Rep 1st to 28th rows 6 times more, dec 5 sts evenly across last row. 94 sts.

**1st row:** (RS). With A, knit.

**2nd row:** With A, knit.

**3rd and 4th rows:** With B, knit. Rep last 4 rows 3 times more, then 1st row once.

Cast off knitways (WS).



Key

■ = With A, knit on RS rows and on WS rows.

□ = With B, knit on RS rows and on WS rows.

◻ or ◻ = Sl1yb on RS rows, Sl1yf on WS rows.