



### MATERIALS

**Bernat® Blanket™** (10.5 oz/300 g; 220 yds/201 m)

Pale Grey (10046)

**4 balls or 792 yds/720 m**

Size U.S. 13 (9 mm) Susan Bates® Silvalume™ circular knitting needle, 36" [91.5 cm] long **or size needed to obtain gauge.**



KNIT | SKILL LEVEL: **INTERMEDIATE**

### ABBREVIATIONS

**Approx** =

Approximately

**Beg** = Beginning

**Cont** = Continue(ity)

**K** = Knit

**K2tog** = Knit next 2 stitches together

**P** = Purl

**Pat** = Pattern

**Pss** = Pass slipped stitch over

**Rep** = Repeat

**RS** = Right side

**Sl1** = Slip next stitch knitwise

**Ssk** = Slip next 2 stitches knitwise one at a time. Pass them back onto left-hand needle, then knit through back loops together.

**WS** = Wrong side

**Yo** = Yarn over

### MEASUREMENTS

Approx 56" x 60" [142 x 152.5 cm].

### GAUGE

7 sts and 12 rows = 4" [10 cm] in stocking stitch.

### INSTRUCTIONS

Cast on 99 sts (multiple of 6 sts + 3).

**Do not** join. Working back and forth across needle, knit 3 rows (garter st), noting first row is WS.

Proceed in pat as follows:

See chart on page 2

**1st row:** (RS). K2. \*yo. ssk. K1. K2tog. yo. K1. Rep from \* to last st. K1.

**2nd row:** K1. Purl to last st. K1.

**3rd to 6th rows:** Rep 1st and 2nd rows twice more.

**7th row:** K3. \*yo. Sl1. K2tog. pss. yo. K3. Rep from \* to end of row.

**8th row:** As 2nd row.

**9th row:** K2. \*K2tog. yo. K1. yo. ssk. K1. Rep from \* to last st. K1.

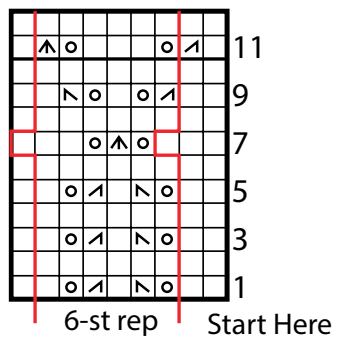
**10th row:** As 2nd row.

**11th row:** K1. K2tog. \*yo. K3. yo. Sl1. K2tog. pss. Rep from \* to last 6 sts. yo. K3. yo. ssk. K1.

**12th row:** As 2nd row.

Rep last 12 rows for pat until work from beg measures approx 59½" [151 cm], ending on 5th row of pat.

Knit 2 rows (garter st).  
Cast off knitwise (WS).



## Key

- ☐ Knit on RS rows. Purl on WS rows.
- ☒ K2tog
- ☒ ssk
- ☒ Sl1. K2tog. psso
- ☒ yo

