



KNIT 1 SKILL LEVEL: EASY

ABBREVIATIONS

Approx =

Approximately

K = Knit

P = Purl

Pat = Pattern

Rep = Repeat

RS = Right side

St(s) = Stitch(es)

Tog = Together

WS = Wrong side

MEASUREMENTS

Approx 40¼ x 44 ½" [102 x 113 cm].

GAUGE

11 sts and 18 rows = 4" [10 cm] in Illusion Pat.

INSTRUCTIONS

PANELS

Make 3 Panels:

- Two Panels using A as Color 1, B as Color 2, C as Color 3, and D as Color 4.
- One Panel using C as Color 1, D as Color 2, A as Color 3 and B as Color 4.

Working back and forth across needle in rows, proceed as follows: See charts on page 3.

With Color 1, cast on 38 sts.

1st row: (RS). With Color 1, knit.

2nd row: (WS). With Color 1, purl.

3rd row: With Color 2, knit.

4th row: With Color 2, knit.

5th row: With Color 1, knit.

6th row: With Color 1, P32. K6.

7th row: With Color 2, knit.

8th row: With Color 2, K32. P6.

9th row: With Color 1, knit.

10th row: With Color 1, P27. K11.

11th row: With Color 2, knit.

12th row: With Color 2, K27. P11.

13th row: With Color 1, knit.

14th row: With Color 1, P23. K15.

15th row: With Color 2, knit.

16th row: With Color 2, K23. P15.

17th row: With Color 1, knit.

18th row: With Color 1, P20. K18.

19th row: With Color 2, knit.

20th row: With Color 2, K20. P18.

21st row: With Color 1, knit.

22nd row: With Color 1, P18. K20.

23rd row: With Color 2, knit.

24th row: With Color 2, K18. P20.

25th row: With Color 1, knit.

26th row: With Color 1, P16. K22.

MATERIALS

Bernat® Forever Fleece™ (9.9 oz/280 g; 194 yds/177 m)

Contrast A Bergamot (61009) **2 balls**

Contrast B Patchouli (61001) **2 balls**

Contrast C Lunar Gray (61024) **2 balls**

Contrast D Rose Hip (61003) **2 balls**

Size U.S. 11 [8 mm] Susan Bates® Silvalume® circular knitting needle 36" [91.5 cm] long **or size needed to obtain gauge.** Susan Bates® yarn needle.

27th row: With Color 2, knit.
28th row: With Color 2, K16. P22.
29th row: With Color 1, knit.
30th row: With Color 1, P14. K24
31st row: With Color 2, knit.
32nd row: With Color 2, K14. P24.
33rd row: With Color 1, knit.
34th row: With Color 1, P11. K27.
35th row: With Color 2, knit.
36th row: With Color 2, K11. P27.
37th row: With Color 1, knit.
38th row: With Color 1, P10. K28.
39th row: With Color 2, knit.
40th row: With Color 2, K10. P28.
41st row: With Color 1, knit.
42nd row: With Color 1, P8. K30.
43rd row: With Color 2, knit.
44th row: With Color 2, K8. P30.
45th row: With Color 1, knit.
46th row: With Color 1, P7. K31.
47th row: With Color 2, knit.
48th row: With Color 2, K7. P31.
49th row: With Color 1, knit.
50th row: With Color 1, P6. K32.
51st row: With Color 2, knit.
52nd row: With Color 2, K6. P32.
53rd row: With Color 1, knit.
54th row: With Color 1, P5. K33.
55th row: With Color 2, knit.
56th row: With Color 2, K5. P33.
57th row: With Color 1, knit.
58th row: With Color 1, P4. K34.
59th row: With Color 2, knit.

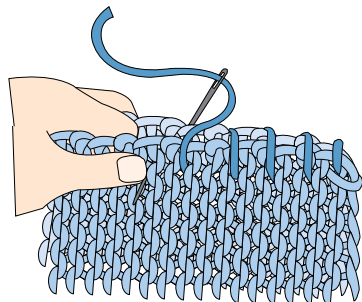
60th row: With Color 2, K4. P34.
61st to 64th rows: As 57th to 60th rows.
65th row: With Color 1, knit.
66th row: With Color 1, P3. K35.
67th row: With Color 2, knit.
68th row: With Color 2, K3. P35.
69th to 72nd rows: As 65th to 68th rows.
73rd row: With Color 1, knit.
74th row: With Color 1, P2. K36.
75th row: With Color 2, knit.
76th row: With Color 2, K2. P36.
77th to 84th rows: Rep 73rd to 76th rows twice. Break Color 1 and Color 2.
85th row: With Color 3, knit.
86th row: With Color 3, P2. K36.
87th row: With Color 4, knit.
88th row: With Color 4, K2. P36
89th to 96th rows: Rep 85th to 88th rows twice.
97th row: With Color 3, knit.
98th row: With Color 3, P3. K35.
99th row: With Color 4, knit.
100th row: With Color 4, K3. P35.
101st to 104th rows: As 97th to 100th row.
105th row: With Color 3, knit.
106th row: With Color 3, P4. K34.
107th row: With Color 4, knit.
108th row: With Color 4, K4. P34.

109th to 112th rows: As 105th to 108th rows.
113th row: With Color 3, knit.
114th row: With Color 3, P5. K33.
115th row: With Color 4, knit.
116th row: With Color 4, K5. P33.
117th row: With Color 3, knit.
118th row: With Color 3, P6. K32.
119th row: With Color 4, knit.
120th row: With Color 4, K6. P32.
121st row: With Color 3, knit.
122nd row: With Color 3, P7. K31.
123rd row: With Color 4, knit.
124th row: With Color 4, K7. P31.
125th row: With Color 3, knit.
126th row: With Color 3, P8. K30.
127th row: With Color 4, knit.
128th row: With Color 4, K8. P30.
129th row: With Color 3, knit.
130th row: With Color 3, P10. K28.
131st row: With Color 4, knit.
132nd row: With Color 4, K10. P28.
133rd row: With Color 3, knit.
134th row: With Color 3, P11. K27.
135th row: With Color 4, knit.
136th row: With Color 4, K11. P27.
137th row: With Color 3, knit.
138th row: With Color 3, P14. K24.
139th row: With Color 4, knit.
140th row: With Color 4, K14. P24.
141st row: With Color 3, knit.
142nd row: With Color 3, P16. K22.
143rd row: With Color 4, knit.

144th row: With Color 4, K16. P22.
145th row: With Color 3, knit.
146th row: With Color 3, P18. K20.
147th row: With Color 4, knit.
148th row: With Color 4, K18. P20.
149th row: With Color 3, knit.
150th row: With Color 3, P20. K18.
151st row: With Color 4, knit.
152nd row: With Color 4, K20. P18.
153rd row: With Color 3, knit.
154th row: With Color 3, P23. K15.
155th row: With Color 4, knit.
156th row: With Color 4, K23. P15.
157th row: With Color 3, knit.
158th row: With Color 3, P27. K11.
159th row: With Color 4, knit.
160th row: With Color 4, K27. P11.
161st row: With Color 3, knit.
162nd row: With Color 3, P33. K5.
163rd row: With Color 4, knit.
164th row: With Color 4, K33. P5.
165th row: With Color 3, knit.
166th row: With Color 3, purl.
167th row: With Color 4, knit.
168th row: With Color 4, knit.

Assembly

Using whipstitch, join Panels tog as shown in photo.



Border

With C and RS facing, pick up and knit 100 sts evenly along side of Blanket.

Knit 3 rows. Break C. Join D. Knit 4 rows. Cast off knitwise.

Rep for opposite side of Blanket.

With A and RS facing, pick up and knit 106 sts evenly along bottom edge of Blanket.

Knit 3 rows. Break A, Join B. Knit 4 rows. Cast off knitwise.

Rep for top edge of Blanket.

Chart I

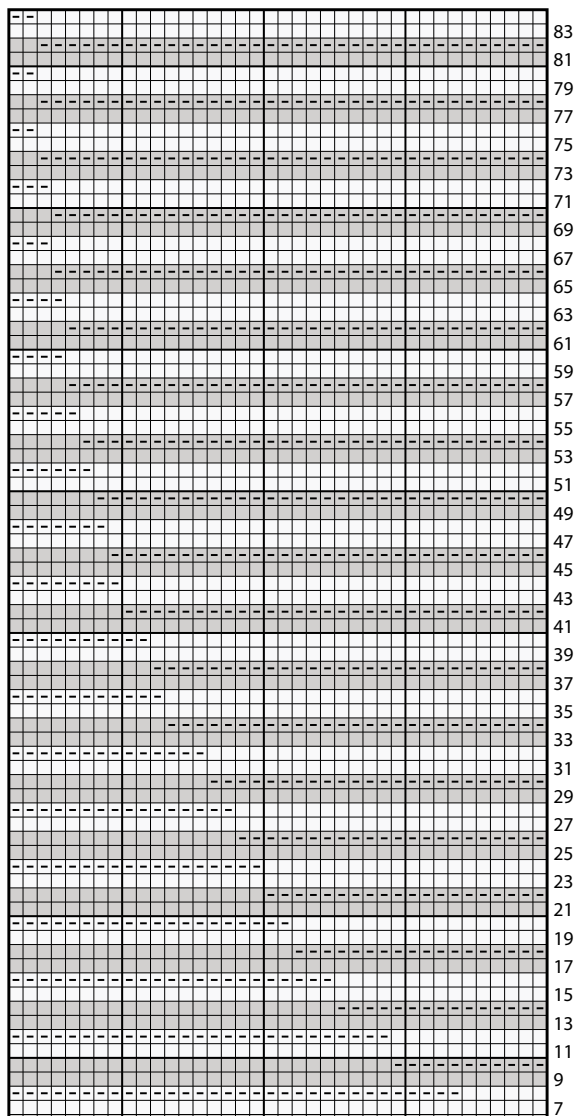
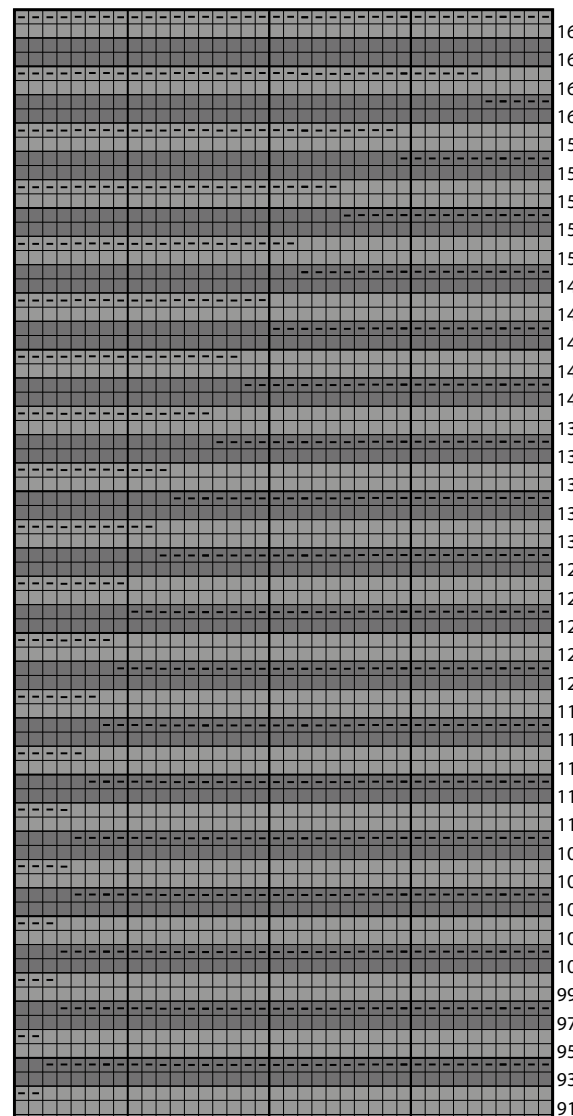


Chart II



Key

- = Color 1
- = Color 2
- = Color 3
- = Color 4
- = Knit on RS; purl on WS.
- = Purl on RS; knit on WS.