



KNIT 1 SKILL LEVEL: EASY

ABBREVIATIONS

Alt = Alternate
Approx = Approximately
Beg = Begin(ning)
Cont = Continue(ity)
K = Knit
K2tog = Knit next 2 stitches together
P = Purl
Pat = Pattern
Pss = Pass slipped stitch over

Rep = Repeat
RS = Right side
Sl1 = Slip next st knitwise
Ssk = Slip next 2 stitches knitwise one at a time. Pass them back onto left-hand needle, then knit through back loops together.
St(s) = Stitch(es)
WS = Wrong side
Yo = Yarn over

MEASUREMENTS

Approx 38" x 40" [96.5 x 101.5 cm].

GAUGE

8 sts and 13 rows = 4" [10 cm] in stocking st

INSTRUCTIONS

Cast on 75 sts (multiple of 6 sts + 3). **Do not** join. Working back and forth across needle, knit 5 rows (garter st), noting first row is WS.

Proceed in pat as follows (see chart on page 2):

1st row: (RS). K2. *yo. ssk. K1. K2tog. yo. K1. Rep from * to last st. K1.

2nd and alt rows: K1. Purl to last st. K1.

3rd and 5th rows: As 1st row.

7th row: K3. *yo. Sl1. K2tog. pss. yo. K3. Rep from * to end of row.

9th row: K2. *K2tog. yo. K1. yo. ssk. K1. Rep from * to last st. K1.

11th row: K1. K2tog. *yo. K3. yo. Sl1. K2tog. pss. Rep from * to last 6 sts. yo. K3. yo. ssk. K1.

12th row: As 2nd row. These 12 rows form pat.

MATERIALS

Bernat® Blanket™ (21 oz/600 g; 440 yds/402 m)

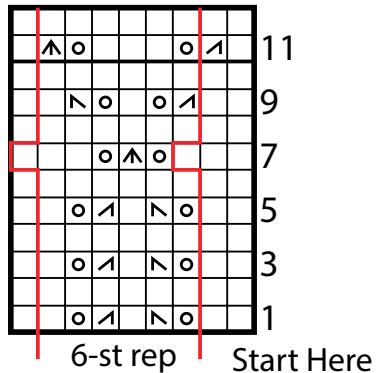
Salmon Sand (58033)

1 ball or 410 yds/375 m

Size U.S. 11 (8 mm) circular knitting needle 36" [91.5 cm] long **or size needed to obtain gauge.** Yarn needle.

Cont in pat until work from beg measures approx 39" [99 cm], ending on 5th row of pat.

Knit 4 rows (garter st).
Cast off knitwise (WS).



Key

- Knit on RS rows. Purl on WS rows.
- K2tog
- ssk
- Sl1. K2tog. pssso
- yo

