



KNIT | SKILL LEVEL: **EASY**

ABBREVIATIONS

Approx = Approximately

Cont = Continue(ity)

K = Knit

M1 = Make 1 stitch by picking up horizontal loop lying between next 2 stitches and knitting into back of loop

P = Purl

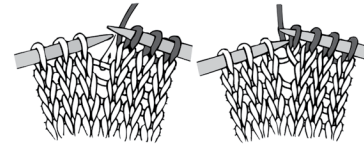
Pat = Pattern

Rep = Repeat

RS = Right side

St(s) = Stitch(es)

WS = Wrong side



MEASUREMENTS

Approx 46" x 59" [117 x 150 cm].

GAUGE

11 sts and 16 rows = 4" [10 cm] in stockinette stitch.

INSTRUCTIONS

Cast on 114 sts. **Do not** join and work back and forth across needle in rows as follows:

Knit 4 rows (garter st) noting first row is WS.

Next row: (WS). K9. *M1. K15. Rep from * end of row. 121 sts.

Proceed in pat as follows:

See chart on page 2.

1st row: (RS). Knit.

2nd row: K7. P3. *K5. P3. Rep from * to last 7 sts. K7.

3rd row: K3. P4. K3. *P5. K3. Rep from * to last 7 sts. P4. K3.

4th row: As 2nd row.

5th row: Knit.

6th row: K3. P3. *K5. P3. Rep from * to last 3 sts. K3.

7th row: K6. *P5. K3. Rep from * to last 3 sts. K3.

8th row: As 6th row.

These 8 rows form Basketweave Pat.

MATERIALS

Bernat® Forever Fleece™ (9.9 oz/280 g; 194 yds/177 m)

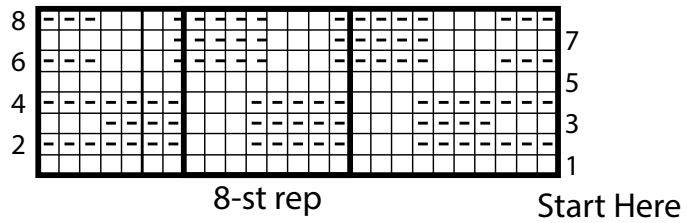
Bergamot (61009)

6 balls

Size U.S. 13 [9 mm] circular knitting needle 36" [91.5 cm] long **or size needed to obtain gauge.** Yarn needle.

Cont in Basketweave Pat until Blanket measures approx 58" [147.5 cm], ending on a 3rd or 7th row of pat.

Next row: (RS). K9. *K2tog. K14.
Rep from * to end of row. 114 sts.
Knit 4 rows (garter st).
Cast off knitwise (WS).



Key

- ☐ = Knit on RS rows. Purl on WS rows.
- ◻ = Purl on RS rows. Knit on WS rows.

