



KNIT | SKILL LEVEL: EASY

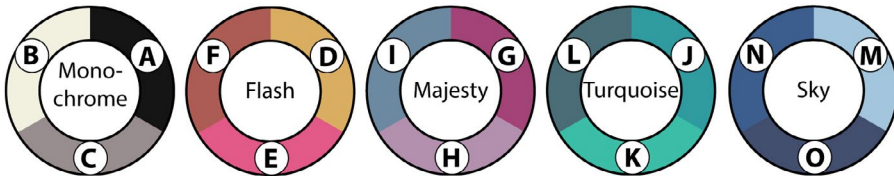
### ABBREVIATIONS

<b>Approx</b> = Approximately	<b>Kfb</b> = Increase 1 stitch by knitting into front and back of next stitch	<b>Pat</b> = Pattern <b>PM</b> = Place marker <b>Rep</b> = Repeat <b>RS</b> = Right side <b>St(s)</b> = Stitch(es) <b>WS</b> = Wrong side
<b>Beg</b> = Begin(ning)	<b>K2tog</b> = Knit next 2 stitches together	
<b>Cont</b> = Continue(ity)		
<b>K</b> = Knit		

### MATERIALS

**Bernat® Blanket™ O'Go™** (10.5 oz/300 g; 220 yds/201 m)

Monochrome (42001)	<b>3 O'Gos</b>
Flash (42056)	<b>1 O'Go</b>
Majesty (42058)	<b>1 O'Go</b>
Turquoise (42053)	<b>1 O'Go</b>
Sky (42050)	<b>1 O'Go</b>



**Bernat® Alize® Blanket-EZ™** (6.4 oz/180 g; 18 yds/16 m)

<b>Contrast P Cream</b> (37013)	<b>1 ball</b>
---------------------------------	---------------

Size U.S. 11 (8 mm) circular knitting needle 36" [91.5 cm] long **or size needed to obtain gauge.** Stitch markers. Yarn needle.

### MEASUREMENTS

Approx 54" x 59½" [137 x 151 cm], excluding fringe.

### GAUGE

8.5 sts and 13 rows = 4" [10 cm] in Ripple Pat.

### INSTRUCTIONS

#### Notes:

- To begin working with the O'Go format, carefully cut plastic tie where the ends of the O'Go meet.
- Pull tie to remove.
- Colors can be easily separated by gently pulling apart and cutting at the color transition. Each color is ready to use.
- Designate each color A, B, C, D, E, F, G, H, I, J, K, L, M, N, O as indicated in Materials.
- Blanket is worked from side to side.
- Blanket is worked over st multiple of 24 sts +6.

## Stripe Pat

**Note:** Break yarn at each color change.

With A, work 2 rows.

With B, work 2 rows. (PM for Fringe).

With A, work 2 rows.

With D work 8 rows.

With C, work 2 rows.

With B, work 2 rows.

With C, work 2 rows.

With E, work 8 rows.

With A, work 2 rows.

With B, work 2 rows. (PM for Fringe).

With A, work 2 rows.

With F, work 8 rows.

With C, work 2 rows.

With B, work 2 rows.

With C, work 2 rows.

With G, work 8 rows.

With A, work 2 rows.

With B, work 2 rows. (PM for Fringe).

With A, work 2 rows.

With H, work 8 rows.

With C, work 2 rows.

With B, work 2 rows.

With C, work 2 rows.

With I, work 8 rows.

With A, work 2 rows.

With B, work 2 rows. (PM for Fringe).

With A, work 2 rows.

With J, work 8 rows.

With C, work 2 rows.

With B, work 2 rows.

With C, work 2 rows.

With K, work 8 rows.

With A, work 2 rows.

With B, work 2 rows. (PM for Fringe).

With A, work 2 rows.

With L, work 8 rows.

With C, work 2 rows.

With B, work 2 rows.

With C, work 2 rows.

With M, work 8 rows.

With A, work 2 rows.

With B, work 2 rows. (PM for Fringe).

With A, work 2 rows.

With N, work 8 rows.

With C, work 2 rows.

With B, work 2 rows.

With C, work 2 rows.

With O, work 8 rows.

With A, work 2 rows.

With B, work 2 rows. (PM for Fringe).

With A, work 2 rows.

These 174 rows form Stripe Pat.

## BLANKET

With A, **loosely** cast on 126 sts. See chart on page 3.

**Set-up row: 1st row:** (WS). Knit. Beg working Stripe Pat AT SAME TIME, proceed in Ripple Pat as follows:

**1st and 2nd rows:** With A, knit, noting 1st row is RS.

**3rd row:** With B, knit.

**4th row:** K3. Purl to last 3 sts. K3.

**5th and 6th rows:** With A, knit.

**7th row:** (RS). With D, knit.

**8th row:** K3. Purl to last 3 sts. K3.

**9th row:** K3. \*(K2tog) 4 times. (Kfb) 8 times. (K2tog) 4 times. Rep from \* to last 3 sts. K3.

**10th row:** K3. Purl to last 3 sts. K3.

**11th to 14th rows:** Rep 7th to 10th rows once more.

These 14 rows form Ripple Pat. First 14 rows of Stripe Pat complete.

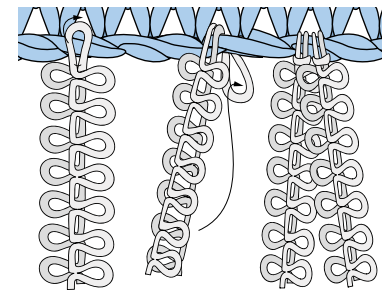
Using appropriate color and keeping cont of Stripe Pat, rep 1st to 14th rows of Ripple Pat 11 times more, then rep 1st to 6th rows once, until all 174 rows of Stripe Pat are complete.

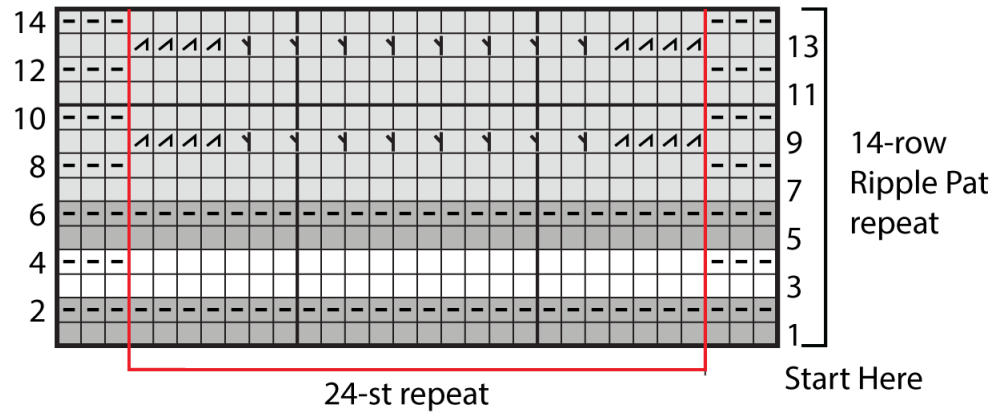
**Next row:** With A, knit.

Cast off **loosely** knitwise.

## FINISHING

**Loopy Fringe:** Cut strands of P (EZ yarn) 15-loops long. \*Take 1 strand folded in half and pull 8th loop through RS of work to WS through edge st centered in marked stripe. Pull 2 loose ends of strand through 8th loop to knot into fringe (see diagram). Rep from \* once more through same st (total of 2 fringe pieces per st). Cont adding 2 fringe pieces, centered in each marked stripe, along top and bottom edges of Blanket (see photo).





KEY

- ☐☐☐ = Represent Stripe Pat color changes.
- ☐ = Knit on RS rows. Purl on WS rows.
- ☐ = Knit on WS rows.
- ☐ = K2tog
- ☐ = Kfb