



KNIT | SKILL LEVEL: **INTERMEDIATE**

ABBREVIATIONS

Alt = Alternate
Approx = Approximately
Beg = Beginning
C8B = Slip next 4 stitches onto cable needle and leave at back of work. K4, then K4 from cable needle.
C8F = Slip next 4 stitches onto cable needle and leave at front of work. K4, then K4 from cable needle.
Cont = Continue
K = Knit

M1P = Make 1 stitch by picking up horizontal loop lying before next stitch and purling into front of loop
P = Purl
Pat = Pattern
P2tog = Knit next 2 stitches together
Pat = Pattern
Rep = Repeat
RS = Right side
St(s) = Stitch(es)
WS = Wrong side

MATERIALS

Bernat® Blanket Extra Thick™ (21.2 oz/600 g; 72 yds/66 m)

Contrast A Orchid (62017) **1 ball or 58 yds/53 m**

Contrast B Vintage White (62008) **3 balls or 208 yds/190 m**

Size U.S. 50 (25 mm) circular knitting needle 36" [91.5 cm] long **or size needed to obtain gauge.** Spare double-pointed or circular needle in large size to use as cable needle (see note below).

Note: Due to the large gauge of Bernat® Blanket Extra Thick™ most traditional cable needles will be too small to accommodate stitches for this pattern. A large sized double-pointed needle or circular needle can be used as a cable needle substitute.

MEASUREMENTS

Approx 48 x 58" [122 x 147.5 cm].

GAUGE

2.5 sts and 3.5 rows = 4" [10 cm] in stocking stitch.

INSTRUCTIONS

With A, cast on 28 sts.

Do not join. Working back and forth across needle in rows, proceed as follows:

Set-up row 1: (RS). (K1. P1) 3 times. P3. K10. P3. (P1. K1) 3 times.

Set-up row 2: (K1. P1) twice. K5. M1P. P10. M1P. K5. (P1. K1) twice. 30 sts.

Proceed in Cable Pat as follows (see chart on page 2):

1st row: (RS). (K1. P1) 3 times. P3. K12. P3. (P1. K1) 3 times.

2nd and alt rows: (K1. P1) twice. K5. P12. K5. (P1. K1) twice.

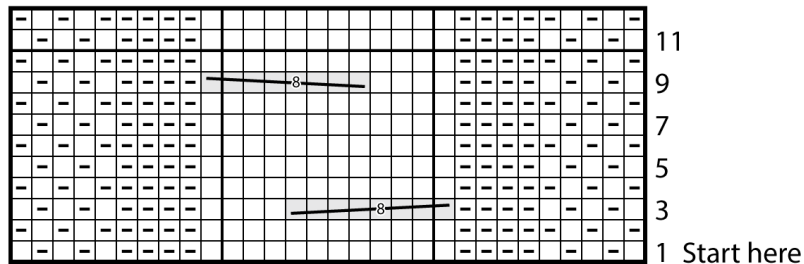
3rd row: (K1. P1) 3 times. P3. C8B. K4. P3. (P1. K1) 3 times.

5th and 7th rows: As 1st row.
9th row: (K1. P1) 3 times. P3. K4.
 C8F. P3. (P1. K1) 3 times.
11th row: As 1st row.
12th row: As 2nd row.
 These 12 rows form Cable Pat.
 Break A.

Next row: (WS). (K1. P1) twice. K5.
 P2tog. P8. P2tog. K5. (P1. K1) twice.
 28 sts.
Next row: (RS). (K1. P1) 3 times. P3.
 K10. P3. (P1. K1) 3 times.
 Cast off.

Next row: (RS). With B, knit.

With B, beg on a 2nd row, cont in Cable Pat until work from beg measures approx 56" [142 cm], ending on a 5th or 11th row of pat.



Key

- ☐ = Knit on RS rows, Purl on WS rows.
- ◻ = Purl on RS rows, Knit on WS rows.



= C8B



= C8F

