



KNIT | SKILL LEVEL: EASY

ABBREVIATIONS

Approx =

Approximately

Beg = Beginning

Cont = Continue

K = Knit

K2tog = Knit next

2 stitches together

P = Purl

Pat = Pattern

Rep = Repeat

RS = Right side

St(s) = Stitch(es)

Yo = Yarn over

WS = Wrong side

MEASUREMENTS

Approx 51½" x 60" [131 x 152.5 cm].

GAUGE

14.5 sts and 18 rows = 4" [10 cm] in Shale Pat.

INSTRUCTIONS

Note: Carry color not in use loosely up side of work.

Stripe Pat

Work 4 rows A.

Work 4 rows B.

These 8 rows form Stripe Pat.

With A, cast on 186 sts (multiple of 18 sts + 6). **Do not** join. Working back and forth across needle in rows, proceed as follows:

1st row: (RS). Knit.

2nd row: K3. Purl to last 3 sts. K3.

3rd row: K3. *(K2tog) 3 times. (yo. K1) 6 times. (K2tog) 3 times. Rep from * to last 3 sts. K3.

4th row: Knit.

These 4 rows form Shale Pat.

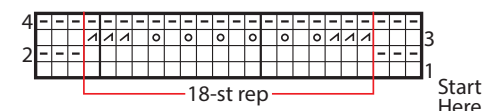
First 4 rows of Stripe Pat are complete.

Cont in Shale and Stripe Pat until work from beg measures approx 59½" [151 cm], ending on a 2nd row of Shale Pat in A.

With A, knit 1 row.

Cast off knitwise (WS).

Shale Pat Chart



KEY

☐ = Knit on RS rows. Purl on WS rows

☐ = Purl on RS rows. Knit on WS rows

⊖ = yo

⊞ = K2tog

MATERIALS

Bernat® Toasty™ (7.9 oz/225 g; 285 yds/261 m)

Contrast A Taupe (25008)

3 balls

Contrast B Frosted Cactus (25002)

3 balls

Size U.S. 10 (6 mm) circular knitting needle 36" [91.5 cm] long **or size needed to obtain gauge.**