



KNIT | SKILL LEVEL: INTERMEDIATE

## ABBREVIATIONS

**Approx** = Approximately

**Beg** = Beginning

**C10F** = Slip next 5 stitches onto cable needle and leave at front of work. K5, then K5 from cable needle.

**Cont** = Continue(ity)

**K** = Knit

**K2tog** = Knit next 2 stitches together

**Kfb** = Increase 1 stitch by knitting into front and back of next stitch

**P** = Purl

**P2tog** = Purl next 2 stitches together

**Pat** = Pattern

**Pfb** = Increase 1 stitch by purling into front and back of next stitch

**PM** = Place marker

**Rep** = Repeat

**RS** = Right side

**St(s)** = Stitch(es)

**SM** = Slip marker

**T6B** = Slip next stitch onto cable needle and leave at back of work. K5, then P1 from cable needle.

**T6F** = Slip next 5 stitches onto cable needle and leave at front of work. P1, then K5 from cable needle.

**WS** = Wrong side

## MATERIALS

**Bernat® Toasty™** (7.9 oz/225 g; 285 yds/261 m)

Taupe (25008)

**5 balls**

Size U.S. 10 (6 mm) circular knitting needle 36" [91.5 cm] long **or size needed to obtain gauge.** Stitch markers. Cable needle. 7" [18 cm] piece of wide cardboard for tassels. Yarn needle.

## MEASUREMENTS

Approx 50" x 55" [127 x 139.5 cm].

## GAUGES

11 sts and 20 rows = 4" [10 cm] in Waffle St Pat.

Cable Pat Panel = Approx 8" wide.

## INSTRUCTIONS

**Cable Panel Pat** (worked over 28 sts). See chart on page 3.

**1st row:** (RS). K5. P3. T6F. T6B. P3. K5.

**2nd row:** K2. P3. K4. P10. K4. P3. K2.

**3rd row:** K5. P4. C10F. P4. K5.

**4th row:** As 2nd row.

**5th row:** K5. P3. T6B. T6F. P3. K5.

**6th row:** K2. P3. K3. P5. K2. P5. K3. P3. K2.

**7th row:** K5. P2. T6B. P2. T6F. P2. K5.

**8th row:** K2. P3. K2. P5. K4. P5. K2. P3. K2.

**9th row:** K5. P2. K5. P4. K5. P2. K5.

**10th to 25th rows:** As 8th and 9th rows 8 times more.

**26th row:** As 8th row.

**27th row:** K5. P2. T6F. P2. T6B. P2. K5.

**28th row:** As 6th row.

These 28 rows form Cable Panel Pat.

**Waffle St Pat** (worked over 94 sts - multiple of 3 sts + 1) See chart on page 3.

**1st row:** (RS). \*K1. P2. Rep from \* to last st before marker. K1.

**2nd row:** \*P1. K2. Rep from \* to last st before marker. P1.

**3rd row:** Knit all sts to maker.

**4th row:** Purl all sts to maker.

These 4 rows form Waffle Stitch Pat.

## BLANKET

Cast on 140 sts. **Do not** join. Working back and forth across needle in rows, proceed in Set-up rows as follows:

## Set-up Rows

**1st row:** (RS). K5. P2. K4. P1. K4. P2. K5. PM. \*K1. P2. Rep from \* to last 24 sts. K1. PM. K5. P2. K4. P1. K4. P2. K5.

**2nd row:** K2. P3. K2. P4. K1. P4. K2. P3. K2. SM. Work 2nd row of Waffle St Pat. SM. K2. P3. K2. P4. K1. P4. K2. P3. K2.

**3rd row:** K5. P2. K4. P1. K4. P2. K5. SM. Work 3rd row of Waffle St Pat. SM. K5. P2. K4. P1. K4. P2. K5.

**4th row:** K2. P3. K2. P4. K1. P4. K2. P3. K2. SM. Work 4th row of Waffle St Pat. SM. K2. P3. K2. P4. K1. P4. K2. P3. K2.

**5th row:** K5. P2. K4. P1. K4. P2. K5. SM. Work 1st row of Waffle Stitch Pat. SM. K5. P2. K4. P1. K4. P2. K5.

**6th row:** K2. P3. K2. P3. Pfb. Kfb. Pfb. P3. K2. P3. K2. SM. Work 2nd row of Waffle St Pat. SM. K2. P3. K2. P3. Pfb. Kfb. Pfb. P3. K2. P3. K2. 146 sts.

**7th row:** K5. P2. T6F. T6B. P2. K5. SM. Work 3rd row of Waffle St Pat. SM. K5. P2. T6F. T6B. P2. K5.

**8th row:** K2. P3. K3. P4. (Pfb) twice. P4. K3. P3. K2. SM. Work 4th row of Waffle St Pat. SM. K2. P3. K3. P4. (Pfb) twice. P4. K3. P3. K2. 150 sts.

## Body

**1st row:** (RS). Work 1st row of Cable Panel Pat. SM. Work 1st row of Waffle St Pat. SM. Work 1st row of Cable Pat.

**2nd row:** Work 2nd row of Cable Panel Pat. SM. Work 2nd row of Waffle St Pat. SM. Work 2nd row of Cable Pat.

**3rd row:** Work 3rd row of Cable Panel Pat. SM. Work 3rd row of Waffle St Pat. SM. Work 3rd row of Cable Pat.

**4th row:** Work 4th row of Cable Panel Pat. SM. Work 4th row of Waffle St Pat. SM. Work 4th row of Cable Pat.

**5th row:** Work 5th row of Cable Panel Pat. SM. Work 1st row of Waffle St Pat. SM. Work 5th row of Cable Pat.

**6th row:** Work 6th row of Cable Panel Pat. SM. Work 2nd row of Waffle St Pat. SM. Work 6th row of Cable Pat.

**7th row:** Work 7th row of Cable Panel Pat. SM. Work 3rd row of Waffle St Pat. SM. Work 7th row of Cable Pat.

**8th row:** Work 8th row of Cable Panel Pat. SM. Work 4th row of Waffle St Pat. SM. Work 8th row of Cable Pat.

Keeping Cont of Cable Panel Pat and Waffle St Pat, cont as established until work from beg measures approx 53" [134.5 cm], ending on 5th row of Cable Panel Pat.

Proceed in Finishing Rows as follows:

**1st row:** (WS). K2. P3. K3. P4. P2tog. P2tog. P4. K3. P3. K2. SM. Work 2nd row of Waffle St Pat. SM. K2. P3. K3. P4. P2tog. P2tog. P4. K3. P3. K2. 146 sts.

**2nd row:** K5. P2. T6B. T6F. P2. K5. SM. Work 3rd row of Waffle St Pat. SM. K5. P2. T6B. T6F. P2. K5.

**3rd row:** K2. P3. K2. P3. P2tog. K2tog. P2tog. P3. K2. P3. K2. SM. Work 4th row of Waffle St Pat. SM. K2. P3. K2. P3. P2tog. K2tog. P2tog. P3. K2. P3. K2. 140 sts.

**4th row:** K5. P2. K4. P1. K4. P2. K5. SM. Work 1st row of Waffle St Pat. SM. K5. P2. K4. P1. K4. P2. K5.

**5th row:** K2. P3. K2. P4. K1. P4. K2. P3. K2. SM. Work 2nd row of Waffle St Pat. SM. K2. P3. K2. P4. K1. P4. K2. P3. K2.

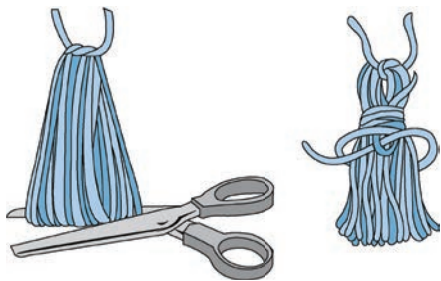
**6th row:** K5. P2. K4. P1. K4. P2. K5. SM. Work 3rd row of Waffle St Pat. SM. K5. P2. K4. P1. K4. P2. K5.

**7th row:** K2. P3. K2. P4. K1. P4. K2. P3. K2. SM. Work 4th row of Waffle St Pat. SM. K2. P3. K2. P4. K1. P4. K2. P3. K2.

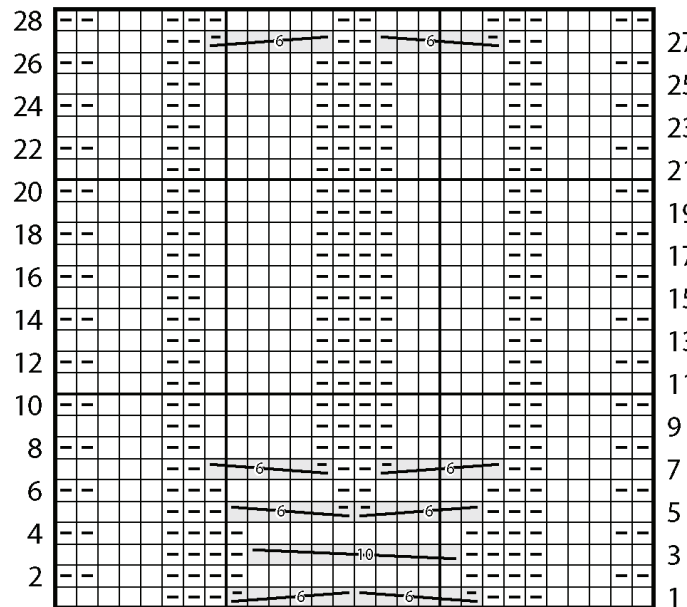
**8th row:** K5. P2. K4. P1. K4. P2. K5. SM. Work 1st row of Waffle St Pat. SM. K5. P2. K4. P1. K4. P2. K5.

**9th row:** K2. P3. K2. P4. K1. P4. K2. P3. K2. SM. Work 2nd row of Waffle St Pat. SM. K2. P3. K2. P4. K1. P4. K2. P3. K2.  
Cast off.

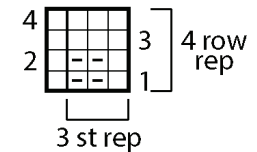
**Tassels (make 4):** Wind yarn around a piece of cardboard 7" [18 cm] wide 30 times. Tie through loops securely at one end. Cut across opposite end. Wrap yarn twice around Tassel 1½" [4 cm] down from tied end. Fasten securely. Sew 1 Tassel to each corner (as shown in photo).



Cable Panel



Waffle St Pat



Key

- = Knit on RS rows. Purl on WS rows.
- ◻ = Purl on RS rows. Knit on WS rows.

Key

- = Knit on RS rows. Purl on WS rows.
- ◻ = Purl on RS rows. Knit on WS rows.

= T6B

= T6F

= C10F