



MATERIALS

Bernat® Blanket™ (10.5 oz/300 g; 220 yds/201 m)

Main Color (MC) Vintage White (10006) **4 balls or 728 yds/666 m**

Contrast A Coal (10040) **3 balls or 533 yds/487 m**

Size U.S. 11 (8 mm) circular knitting needle 36" [91.5 cm] long **or size needed to obtain gauge.**



KNIT | SKILL LEVEL: EASY

ABBREVIATIONS

Approx = Approximately

K = Knit

Pat = Pattern

Rep = Repeat

RS = Right side

Sl1Pwyib = Slip next stitch purlwise with yarn in back of work

Sl1Pwyif = Slip next stitch purlwise with yarn in front of work

St(s) = Stitch(es)

Tog = Together

WS = Wrong side

MEASUREMENTS

Approx 52" x 59½" [134.5 x 151 cm], excluding fringe.

GAUGE

8 sts and 16 rows = 4" [10 cm] in Woven Stripe Pat.

INSTRUCTIONS

Notes:

- Blanket is worked from side to side.
- Worked over multiple of 4 sts +3.
- Carry MC when not in use loosely up side of work.
- Carry A when not in use loosely up side of work unless otherwise stated.

- When carrying yarn behind/in front of slipped sts, be sure yarn is loose enough to maintain gauge and prevent work from puckering.

With MC, cast on 119 sts. **Do not** join. Working back and forth across needle in rows, proceed as follows:

1st and 2nd rows: Knit.

Proceed in Woven Stripe Pat as follows (see chart on page 2):

Join A.

1st row: (RS). With A, K3. *Sl1Pwyib. K3. Rep from * to end of row.

2nd row: *K3. Sl1Pwyif. Rep from * to last 3 sts. K3. Break A.

3rd row: With MC, knit.

4th row: Purl.

5th and 6th rows: Rep 3rd and 4th rows once more. Join A.

7th row: With A, K1. *S11Pwyib. K1. Rep from * to end of row.

8th row: *K1. S11Pwyif. Rep from * to last st. K1.

9th row: With MC, knit.

10th row: Purl.

11th to 18th rows: Rep 7th to 10th rows twice more. Break A after last rep.

19th row: With MC, knit.

20th row: Purl. Join A.

21st row: With A, K3. *S11Pwyib. K3. Rep from * to end of row.

22nd row: *K3. S11Pwyif. Rep from * to last 3 sts. K3. Break A.

23rd row: With MC, knit.

24th row: Purl.

25th and 26th rows: Rep 23rd and 24th rows once more. Join A.

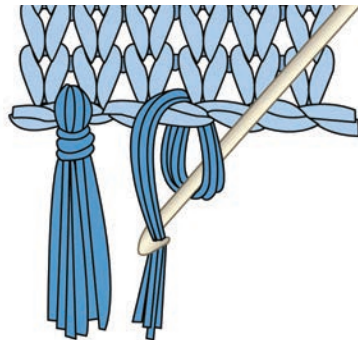
Rep 1st to 26th rows 6 times more, then rep 1st to 23rd rows once.

Next row: Knit.

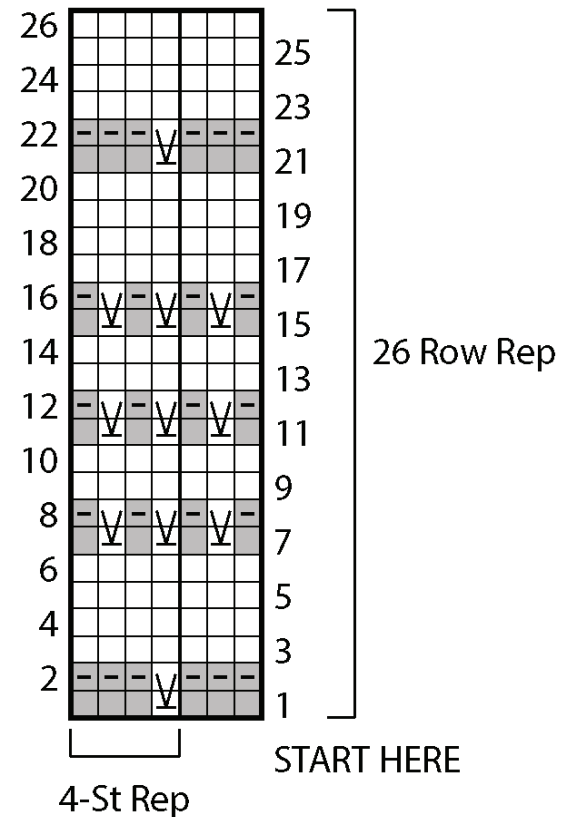
Cast off.

FINISHING





Fringe: Cut strands of A 12" [30.5 cm] long. Taking 4 strands tog, fold in half and knot into fringe between each 1st and 2nd row, 7th and 8th row, and 21st and 22nd row rep (all A rows) across top and bottom edges of Blanket. Trim fringe evenly.



Woven Stripe Pat



KEY

-  = With MC, knit on RS rows. Purl on WS rows.
-  = With A, knit on RS rows. Purl on WS rows.
-  = With A, knit on WS rows.
-  = S11Pwyib on RS rows. S11Pwyif on WS rows.