



KNIT | SKILL LEVEL: **INTERMEDIATE**

ABBREVIATIONS

Approx = Approximately

C6B = Slip next 3 stitches onto cable needle and leave at back of work. K3, then K3 from cable needle

C6F = Slip next 3 stitches onto cable needle and leave at front of work. K3, then K3 from cable needle

K = Knit

K2tog = Knit next 2 stitches together

P = Purl

Pfb = Increase 1 stitch by purling into front and back of next stitch

Pat = Pattern

Rep = Repeat

RS = Right side

St(s) = Stitch(es)

WS = Wrong side

MEASUREMENTS

Approx 33" x 59" [84 x 150 cm].

GAUGE

2.5 sts and 3.5 rows = 4" [10 cm] in stocking st.

INSTRUCTIONS

Cast on 37 sts loosely. **Do not** join. Working back and forth across needle in rows, proceed as follows:

1st row: (WS). (K4. P5) twice. K1. (P5. K4) twice.

2nd row: (P4. K5) twice. P1. (K5. P4) twice.

3rd and 4th rows: Rep 1st and 2nd rows.

5th row: (K4. P2. Pfb. P2) twice. K1 (P2. Pfb. P2. K4) twice. 41 sts.

6th row: (P4. C6B) twice. P1. (C6F. P4) twice.

7th row: (K4. P6) twice. K1. (P6. K4) twice.

Proceed in Cable Pat as follows (see page 2):

1st row: (RS). (P4. K6) twice. P1. (K6. P4) twice.

2nd row: (K4. P6) twice. K1. (P6. K4) twice.

3rd and 4th rows: Rep 1st and 2nd rows.

5th row: (P4. C6B) twice. P1. (C6F. P4) twice.

MATERIALS

Bernat® Blanket Big™ (10.5 oz/300 g; 32 yds/29 m)

Frosted Green (26092)

5 balls

Size U.S. 50 (25 mm) circular knitting needle 36" [91.5 cm] long **or size needed to obtain gauge.** Cable needle.

6th row: Rep 2nd row.
 These 6 rows form Cable Pat.
 Rep Cable Pat twice more.

Next row: (RS). (P4. K2. K2tog. K2) twice. P1. (K2. K2tog. K2. P4) twice. 37 sts.

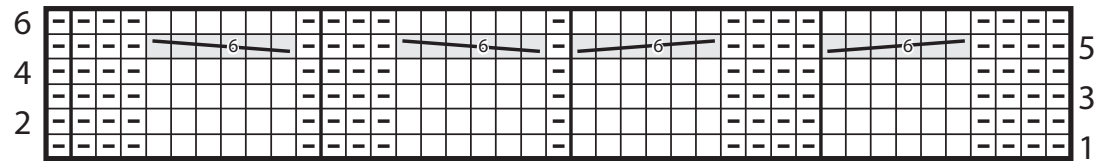
Next row: (K4. P5) twice. K1. (P5. K4) twice.

Next row: (P4. K5) twice. P1. (K5. P4) twice.

Next row: (K4. P5) twice. K1. (P5. K4) twice.

Cast off loosely.

Cable Pat



Start Here

KEY

☐ = Knit on RS rows.
 Purl on WS rows.

◻ = Purl on RS rows.
 Knit on WS rows.

= C6B

= C6F