



KNIT | SKILL LEVEL: INTERMEDIATE

ABBREVIATIONS

Approx = Approximately

Beg = Begin(ning)

Cont = Continue(ity)

K = Knit

M1P = Make 1 stitch by picking up loop lying before next stitch and purling into back of loop

P = Purl

P2tog = Purl next 2 stitches together

Pat = Pattern

Rep = Repeat

RS = Right side

St(s) = Stitch(es)

Tw4B = Slip next 2 stitches onto cable needle and leave at back of work. K2, then P2 from cable needle.

Tw4F = Slip next 2 stitches onto cable needle and leave at front of work. P2, then K2 from cable needle.

WS = Wrong side

MEASUREMENTS

Approx 51 x 62" [129.5 x 157.5 cm].

GAUGE

8 sts and 13 rows = 4" [10 cm] in stocking st.

INSTRUCTIONS

With A, cast on 128 sts. **Do not** join. Working back and forth across needle in rows, proceed as follows:
1st row: (RS). K6. *P2. K4. Rep from * to last 2 sts. K2.

2nd row: K2. *P4. K2. Rep from * to end of row.

Rep last 2 rows (K4. P2) ribbing for 5" [12.5 cm], ending on a 1st row.

Next row: (WS). K2. M1P. *P2. M1P. P2. K2. Rep from * to end of row. 150 sts. Break A.

Foundation row 1: With MC, knit.
Foundation row 2: K8. *P2. K5. Rep from * to last 2 sts. K2. Proceed in pat as follows:

See chart on page 2.

1st row: (RS). *K2. P5. Rep from * to last 3 sts. P1. K2.

2nd row: K8. *P2. K5. Rep from * to last 2 sts. K2.

MATERIALS

Bernat® Blanket™ (10.5 oz/300 g; 220 yds/201 m)

Main Color (MC) Pale Gray (10046) **5 balls or 1040 yds/947 m**

Bernat® Blanket™ (5.3 oz/150 g; 108 yds/98 m)

Contrast A Dark Teal (00745) **1 ball or 108 yds/98 m**

Size U.S. 11 (8 mm) circular knitting needle 36" [91.5 cm] long **or size needed to obtain gauge.** Cable needle.

3rd row: K4. *P3. Tw4F. Rep from * to last 6 sts. P4. K2.

4th row: K6. *P2. K5. Rep from * to last 4 sts. P2. K2.

5th row: K2. *Tw4F. P3. Rep from * to last 8 sts. Tw4F. P2. K2.

6th row: K4. *P2. K5. Rep from * to last 6 sts. P2. K4.

7th row: K2. P2. *Tw4F. P3. Rep from * to last 6 sts. Tw4F. K2.

8th row: K2. *P2. K5. Rep from * to last st. K1.

9th row: K2. P4. *K2. P5. Rep from * to last 4 sts. K4.

10th row: As 8th row.

11th row: K2. P2. *Tw4B. P3. Rep from * to last 6 sts. Tw4B. K2.

12th row: As 6th row.

13th row: K2. *Tw4B. P3. Rep from * to last 8 sts. Tw4B. P2. K2.

14th row: As 4th row.

15th row: K4. P3. *Tw4B. P3. Rep from * to last 3 sts. P1. K2.

16th row: As 2nd row.

These 16 rows form Zig-Zag Cable Pat.

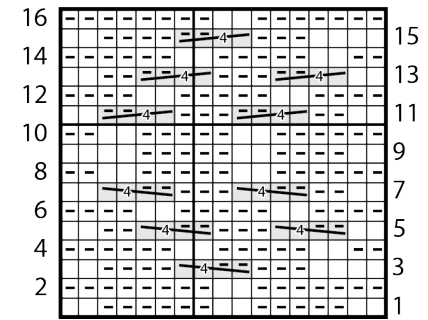
Cont in Zig-Zag Cable Pat until work from beg measures approx 61" [155 cm], ending on an 8th row of pat.

Next row: (RS). K2. P4. *K2. P1. P2tog. P2. Rep from * to last 4 sts.

K4. 130 sts.

Knit 2 rows (garter st).

Cast off knitwise (WS).



Start Here

Key

☐ = Knit on RS rows. Purl on WS rows

◻ = Purl on RS rows. Knit on WS rows

= Tw4B

= Tw4F