



MATERIALS

Bernat® Satin™ (3.5 oz/100 g; 200 yds/182 m)

Contrast A Silk (04007) **4 balls**

Contrast B Camel (04010) **3 balls**

Contrast C Banana (04615) **3 balls**

Size U.S. 8 (5 mm) knitting needles **or size needed to obtain gauge**
– for Blocks. Size U.S. 7 (4.5 mm) circular knitting needle 36" [90 cm]
long.



KNIT | SKILL LEVEL: **EASY**

ABBREVIATIONS

Approx =

Approximately

C6B = Slip next 3 stitches onto cable needle and leave at back of work. K3, then K3 from cable needle

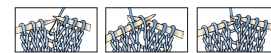
C6F = Slip next 3 stitches onto cable needle and leave at front of work. K3, then K3 from cable needle

K = Knit

K1tbl = Knit next stitch through back of loop

K2tog = Knit next 2 stitches together

M1 = Make 1 stitch by picking up horizontal loop lying before next stitch and knitting into back of loop



MB = [(K1, P1) twice. K1] all in next stitch. 5 stitches made. Turn. P2tog. P1. P2tog. Turn. Sl1. K2tog. pssso. 1 stitch remains

P = Purl

P1tbl = Purl next stitch through back of loop

Pat = Pattern

Pssso = Pass slipped stitch over

Rem = Remain(ing)

RS = Right side

Sl1(3) = Slip next 1 (3) stitch(es) purlwise with yarn at RS of work

Ssk = Slip next 2 stitches knitwise one at a time. Pass them back on left-hand needle, then knit through back loops together

St(s) = Stitch(es)

T3B = Slip next stitch onto cable needle and leave at back of work. K2, then P1 from cable needle

T3F = Slip next

2 stitches onto cable needle and leave at front of work. P1, then K2 from cable needle

T4B = Slip next stitch onto cable needle and leave at back of work. K3, then P1 from cable needle

T4F = Slip next 3 stitches onto cable needle and leave at front of work. P1, then K3 from cable needle

T5B = Slip next 3 stitches onto cable needle and leave at back of work. K2, then P1, K2 from cable needle

Tog = Together

Tw2R = Knit into front of 2nd stitch on left hand needle without slipping stitch off needle, then knit into front of 1st stitch and slip both stitches off needle together

WS = Wrong side

Yo = Yarn over

MEASUREMENTS

Approx 42" x 50" [106.5 x 127 cm], including border.

GAUGE

18 sts and 24 rows = 4" [10 cm] with larger needles in stocking st.

INSTRUCTIONS

BLOCK 1 (see Chart I).



Cast on 44 sts.

1st row: (RS). K2. [P6. (K1. P1) twice] 4 times. K2.

2nd and alt rows: K2. Knit all knit sts and purl all purl sts as they appear to last 2 sts. K2.

3rd row: K2. (K7. P1. K1. P1) 4 times. K2.

5th row: K2. (K1. P7. K1. P1) 4 times. K2.

7th row: K2. (K1. P1. K7. P1) 4 times. K2.

9th row: K2. (K1. P1. K1. P7) 4 times. K2.

11th row: K2. [(K1. P1) twice. K6] 4 times. K2.

13th row: K2. (P2. K1. P1. K1. P5) 4 times. K2.

15th row: K2. (K3. P1. K1. P1. K4) 4 times. K2.

17th row: K2. (P4. K1. P1. K1. P3) 4 times. K2.

19th row: K2. (K5. P1. K1. P1. K2) 4 times. K2.

20th row: As 2nd row.

Rep these 20 rows for knit-purl pat until work from beg measures 8" [20.5 cm], ending with a WS row. Cast off.

BLOCK 2 (see Chart II).



Make 1 Block each with A, B and C. Cast on 48 sts.

1st row: (RS). P1. K6. (P2. K6) 5 times. P1.

2nd row: K1. P5. (K3. P5) 5 times. K2.

3rd row: P3. K4. (P4. K4) 5 times. P1.

4th row: K1. P3. K2. P1. (K2. P3. K2. P1) 5 times. K1.

5th row: P1. K2. *P2. K2. Rep from * to last st. P1.

6th row: K1. P1. K2. P3. (K2. P1. K2. P3) 5 times. K1.

7th row: P1. K4. (P4. K4) 5 times. P3.

8th row: K2. P5. (K3. P5) 5 times. K1.

9th row: As 1st row.

10th row: K1. P6. (K2. P6) 5 times. K1. Rep these 10 rows for Pat until work from beg measures 8" [20.5 cm], ending with a WS row. Cast off.

BLOCK 3 (see Chart III).



Make 1 Block each with A, B and C.

Cast on 47 sts.

Work 2 rows stocking st.

Proceed in pat as follows:

1st row: (RS). K2. (P13. K2) 3 times.

2nd row: K1. P2. (K11. P4) twice. K11. P2. K1.

3rd row: K4. (P9. K6) twice. P9. K4.

4th row: K1. P4. (K7. P8) twice. K7. P4. K1.

5th row: K6. (P5. K10) twice. P5. K6.

6th row: K2. (P5. K3. P5. K2) 3 times.

7th row: K1. P2. (K5. P1. K5. P4) twice. K5. P1. K5. P2. K1.

8th row: As 3rd row.

9th row: As 7th row.

10th row: As 6th row.
11th row: As 5th row.
12th row: As 4th row.
13th row: As 3rd row.
14th row: As 2nd row.
 Rep these 14 rows for pat twice more. Work 2 rows stocking st. Cast off.

BLOCK 4 (see Chart IV).



Make 1 Block each with A, B and C.

Cast on 47 sts.

1st row: (RS). Purl.
2nd row: Knit.
3rd row: Purl.
4th row: P8. Sl3. (P11. Sl3) twice. P8.
5th row: K8. Sl3. (K11. Sl3) twice. K8.
6th and 7th rows: As 4th and 5th rows.
8th row: As 4th row.

9th to 11th rows: As 1st to 3rd rows.
12th row: P1. Sl3. (P11. Sl3) 3 times. P1.
13th row: K1. Sl3. (K11. Sl3) 3 times. K1.
14th and 15th rows: As 12th and 13th rows.
16th row: As 12th row.
 Rep these 16 rows for pat until work from beg measures 8" [20.5 cm], ending with 10th row. Cast off.

BLOCK 5 (see Chart V).



Make 1 Block each with A, B and C.

Cast on 46 sts.

1st row: (RS). K4. (yo. K2tog. K4. ssk. yo. K2) 4 times. K2.

2nd and alt rows: K2. Purl to last 2 sts. K2.
3rd, 5th and 7th rows: As 1st row.
9th row: K5. (ssk. yo. K2. yo. K2tog. K4) 4 times. K1.
11th, 13th and 15th rows: As 9th row.
16th row: As 2nd row.
 Rep these 16 rows for Lace Pat until work from beg measures 8" [20.5 cm], ending with a WS row. Cast off.

BLOCK 6 (see Chart VI).



Make 1 Block each with A, B and C.

Cast on 45 sts.

1st row: (RS). K3. yo. ssk. *K5. K2tog. yo. K1. yo. ssk. Rep from * to last 10 sts. K5. K2tog. yo. K3.

2nd and alt rows: K2. Purl to last 2 sts. K2.
3rd row: K4. *yo. ssk. K3. K2tog. yo. K3. Rep from * 3 times more. K1.
5th row: K5. *yo. ssk. K1. K2tog. yo. K5. Rep from * to end of row.
7th row: *K6. yo. Sl1. K2tog. pssso. yo. K1. Rep from * 3 times more. K5.
9th row: K5. *K2tog. yo. K1. yo. ssk. K5. Rep from * to end of row.
11th row: K4. *K2tog. yo. K3. yo. ssk. K3. Rep from * 3 times more. K1.
13th row: K2. *K1. K2tog. yo. K5. yo. ssk. Rep from * 3 times more. K3.
15th row: K2. K2tog. yo. *K7. yo. Sl1. K2tog. pssso. yo. Rep from * to last 11 sts. K7. yo. ssk. K2.
16th row: As 2nd row.
 These 16 rows form Lace Pat. Cont in Lace Pat until work from beg measures 8" [20.5 cm], ending with a WS row. Cast off.

BLOCK 7 (see Chart VII).



Make 1 Block each with A, B and C.

Cast on 46 sts.

Foundation row: (WS). K3. *M1. K3. Rep from * to last st. K1. 60 sts.

1st row: (RS). K1. P3. Tw2R. P2. K6. P2. Tw2R. P2. K3. P4. C6B. P4. K3. P2. Tw2R. P2. K6. P2. Tw2R. P3. K1.

2nd and alt rows: K1, then knit all knit sts and purl all purl sts as they appear to last st. K1.

3rd row: K1. P3. Tw2R. P2. C6B. P2. Tw2R. P2. (T4F. P2. T4B) twice. P2. Tw2R. P2. C6F. P2. Tw2R. P3. K1.

5th row: K1. P3. Tw2R. P2. K6. P2. Tw2R. P3. T4F. T4B. P2. T4F. T4B. P3. Tw2R. P2. K6. P2. Tw2R. P3. K1.

7th row: K1. P3. Tw2R. P2. K6. P2. Tw2R. P4. C6F. P4. C6B. P4. Tw2R. P2. K6. P2. Tw2R. P3. K1.

9th row: K1. P3. Tw2R. P2. K6. P2. Tw2R. P3. T4B. T4F. P2. T4B. T4F. P3. Tw2R. P2. K6. P2. Tw2R. P3. K1.

11th row: K1. P3. Tw2R. P2. C6B. P2. Tw2R. P2. (T4B. P2. T4F) twice. P2. Tw2R. P2. C6F. P2. Tw2R. P3. K1.

13th row: K1. P3. Tw2R. P2. K6. P2. Tw2R. P2. K3. P4. C6F. P4. K3. P2. Tw2R. P2. K6. P2. Tw2R. P3. K1.

15th row: K1. P3. Tw2R. P2. K6. P2. Tw2R. P2. (T4F. P2. T4B) twice. P2. Tw2R. P2. K6. P2. Tw2R. P3. K1.

17th row: As 5th row.

19th row: K1. P3. Tw2R. P2. C6B. P2. Tw2R. P4. C6B. P4. C6F. P4. Tw2R. P2. C6F. P2. Tw2R. P3. K1.

21st row: As 9th row.

23rd row: K1. P3. Tw2R. P2. K6. P2. Tw2R. P2. (T4B. P2. T4F) twice. P2. Tw2R. P2. K6. P2. Tw2R. P3. K1.

24th row: As 2nd row.

Rep last 24 rows for Cable Pat once more.

Next row: (RS). K3. *K2tog. K2. Rep from * to last st. K1. 46 sts. Cast off knitwise (WS).

BLOCK 8 (see Chart VIII).



Make 1 Block each with A, B and C.

Cast on 46 sts.

Foundation row: (WS). K11. (M1. K4) 6 times. M1. K11. 53 sts.

1st row: (RS). (K1. P1) 4 times. K1tbl. P3. MB. P1. T3B. P7. T5B. P7. T3F. P1. MB. P3. K1tbl. (P1. K1) 4 times.

2nd row: K2. (P1. K1) 3 times. P1tbl. K5. P2. K8. P2. K1. P2. K8. P2. K5. P1tbl. (K1. P1) 3 times. K2.

3rd row: K2. (P1. K1) 3 times. K1tbl. P4. T3B. P7. T3B. K1. T3F. P7. T3F. P4. K1tbl. (K1. P1) 3 times. K2.

4th row: (K1. P1) 4 times. P1tbl. K4. P2. K8. P2. K1. P1. K1. P2. K8. P2. K4. P1tbl. (P1. K1) 4 times.

5th row: (K1. P1) 4 times. K1tbl. P3. T3B. P7. T3B. K1. P1. K1. T3F. P7. T3F. P3. K1tbl. (P1. K1) 4 times.

6th row: K2. (P1. K1) 3 times. P1tbl. K3. P2. K8. P2. (K1. P1) twice. K1. P2. K8. P2. K3. P1tbl. (K1. P1) 3 times. K2.

7th row: K2. (P1. K1) 3 times. K1tbl. P2. T3B. P7. T3B. (K1. P1) twice. K1. T3F. P7. T3F. P2. K1tbl. (K1. P1) 3 times. K2.

8th row: (K1. P1) 4 times. P1tbl. K2. P2. K8. P2. (K1. P1) 3 times. K1. P2. K8. P2. K2. P1tbl. (P1. K1) 4 times.

9th row: (K1. P1) 4 times. K1tbl. P2. T3F. P1. MB. P4. T3B. (K1. P1) 3 times. K1. T3F. P4. MB. P1. T3B. P2. K1tbl. (P1. K1) 4 times.

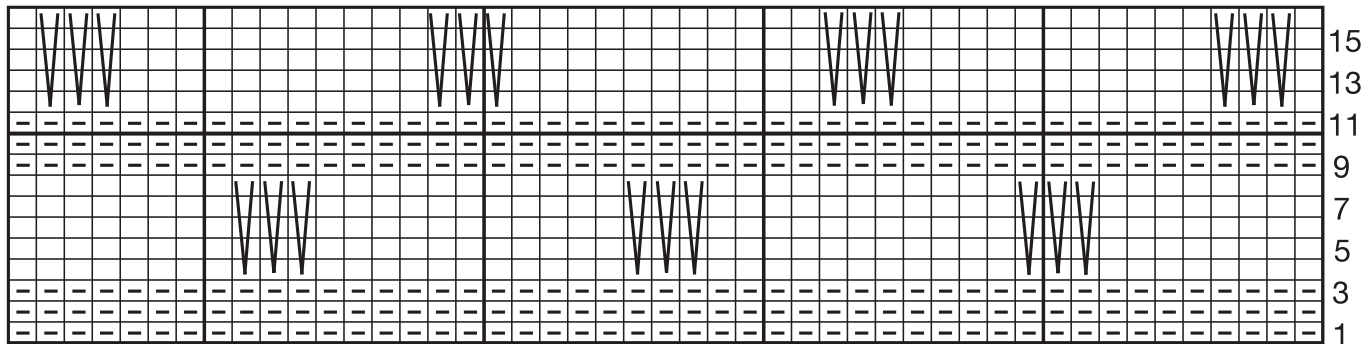
10th row: K2. (P1. K1) 3 times. P1tbl. K3. P2. K6. P2. (K1. P1) 4 times. K1. P2. K6. P2. K3. P1tbl. (K1. P1) 3 times. K2.

11th row: K2. (P1. K1) 3 times. K1tbl. P3. T3F. P4. T3B. (K1. P1) 4 times. K1. T3F. P4. T3B. P3. K1tbl. (K1. P1) 3 times. K2.

12th row: (K1. P1) 4 times. P1tbl. (K4. P2) twice. (K1. P1) 5 times. K1. (P2. K4) twice. P1tbl. (P1. K1) 4 times.

13th row: (K1. P1) 4 times. K1tbl. P4. T3F. P2. T3B. (K1. P1) 5 times. K1. T3F. P2. T3B. P4. K1tbl. (P1. K1) 4 times.

CHART IV: BLOCK #4



Start Here

KEY




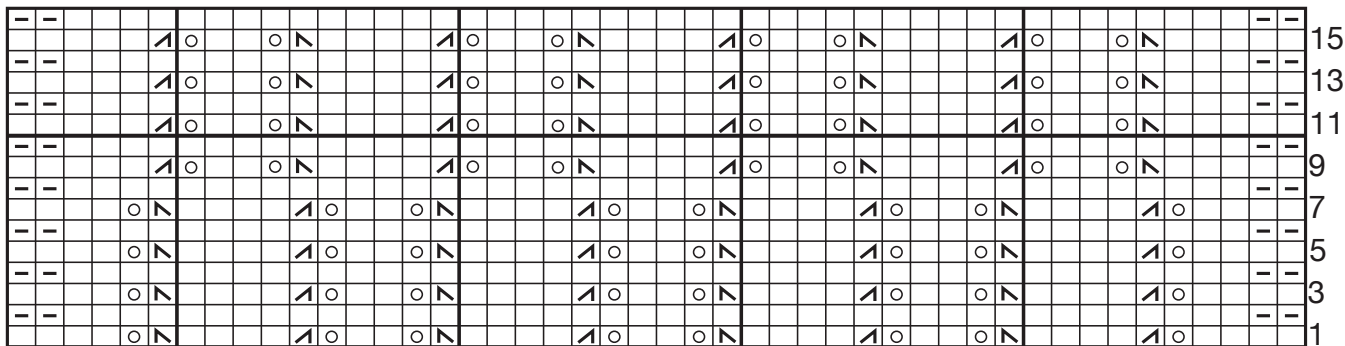
-  = Knit on RS rows, purl on WS rows
-  = Purl on RS rows, knit on WS rows
-  = Sl 3

CHART V: BLOCK #5



Start Here

KEY





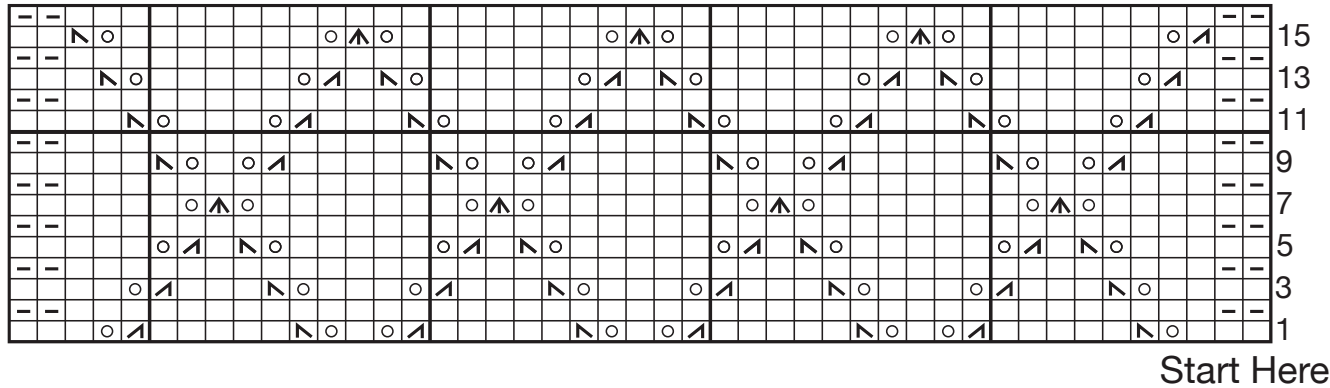
-  = Knit on RS rows, purl on WS rows
-  = yo
-  = K2tog
-  = ssk

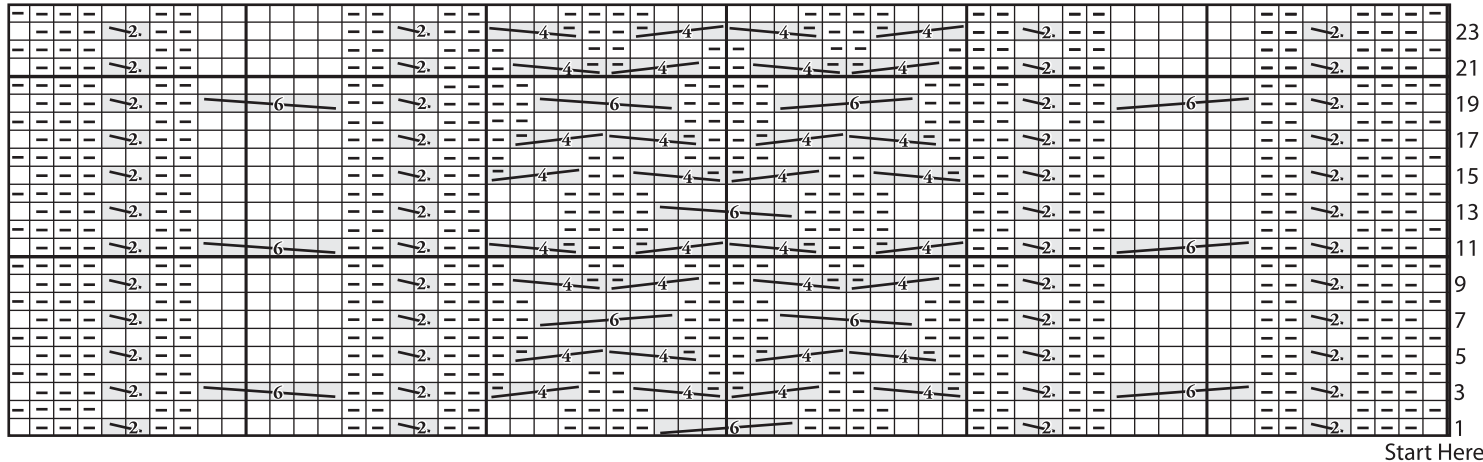
CHART VI: BLOCK #6



KEY

- = Knit on RS rows, Purl on WS rows
- = yo
- = K2tog
- = ssk
- = Sl1. K2tog. pss0.

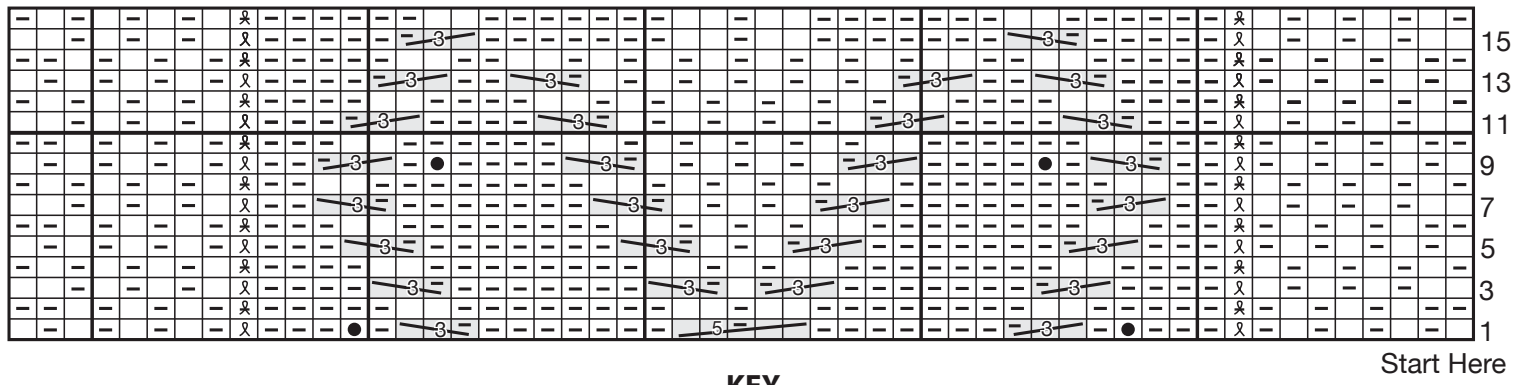
CHART VII: BLOCK #7



KEY

- = Knit on RS rows, Purl on WS rows
- = Purl on RS rows, Knit on WS rows
- = C6B
- = C6F
- = T4B
- = T4F
- = Tw2R

CHART VIII: BLOCK #8



KEY

- = Knit on RS rows, Purl on WS rows
- ☐ = Purl on RS rows, Knit on WS rows
- ☐ = T5B
- ☐ = T3F
- ☐ = P1tbl on WS rows
- ☐ = T3B
- ☐ = K1tbl on RS rows
- = MB

Clue 7	Clue 6	Clue 2	Clue 8
Clue 4	Clue 1	Clue 4	Clue 6
Clue 5	Clue 1	Clue 3	Clue 2
Clue 2	Clue 7	Clue 8	Clue 5
Clue 5	Clue 6	Clue 1	Clue 7
Clue 8	Clue 3	Clue 4	Clue 3

- Key
- ☐ Contrast A
 - ☐ Contrast B
 - ☐ Contrast C