

## BERNAT® GRAPHIC GRIDWORK AFGHAN AND PILLOW | KNIT



### MATERIALS

**Bernat® Super Value™** (7 oz/197 g; 426 yds/389 m)

#### Afghan

**Main Color (MC)** Mushroom (53009) **3 balls**

**Contrast A** Natural (07414) **3 balls**

**Contrast B** Peony Pink (53417) **2 balls**

#### Pillow

**Main Color (MC)** Mushroom (53009) **1 ball**

**Contrast A** Natural (07414) **1 ball**

**Contrast B** Peony Pink (53417) **1 ball**

Size U.S. 8 (5 mm) knitting needles. Size U.S. 8 (5 mm) circular knitting needle 36" [90 cm] long **or size needed to obtain gauge.** 18" [45.5 cm] square pillow form.

### ABBREVIATIONS:

**Approx** = Approximately

**K** = Knit

**P** = Purl

**Pat** = Pattern

**Rem** = Remain(ing)

**Rep** = Repeat

**RS** = Right side

**St(s)** = Stitch(es)

**Tog** = Together

**WS** = Wrong side

 KNIT | SKILL LEVEL: INTERMEDIATE

### MEASUREMENTS

**Afghan:** Approx 47" x 56" [119.5 x 142 cm].

**Pillow:** Approx 18" [45.5 cm] square.

### GAUGE

18 sts and 24 rows = 4" [10 cm] in stocking st.

### INSTRUCTIONS

**Note:** Use separate balls of colors for each separate area of color in the design. To change colors, wind the 2 colors around each other where they meet, on WS to avoid a hole.

### AFGHAN

#### PANEL A (make 3)

With A, cast on 10 sts. With MC, cast on 20 sts. With A, cast on 10 sts. 40 sts.

**1st row:** (RS). With A, K10. With MC, K20. With A, K10.

**2nd row:** With A, P10. With MC, P20. With A, P10.

**3rd to 8th rows:** Rep 1st and 2nd rows 3 times more.

**9th row:** With A, K10. With MC, K5. With B, K10. With MC, K5. With A, K10.

**10th row:** With A, P10. With MC, P5. With B, (K1. P1) 5 times. With MC, P5. With A, P10.

**11th row:** With A, K10. With MC, K5. With B, (P1. K1) 5 times. With MC, K5. With A, K10.

**12th to 23rd rows:** Rep 10th and 11th rows 6 times more.

**24th row:** As 10th row.

**25th to 32nd rows:** Rep 1st and 2nd rows 4 times more.

**33rd row:** With A, K15. With MC, K10. With A, K15.

**34th row:** With A, P15. With MC, P10. With A, P15.

**35th to 40th rows:** As 33rd and 34th rows 3 times more.

**41st row:** With B, K10. With A, K5. With MC, K10. With A, K5. With B, K10.

**42nd row:** With B, (K1. P1) 5 times. With A, P5. With MC, P10. With A, P5. With B, (P1. K1) 5 times.

**43rd row:** With B, (K1. P1) 5 times. With A, K5. With MC, K10. With A, K5. With B, (P1. K1) 5 times.

**44th to 55th rows:** Rep 42nd and 43rd rows 6 times more.

**56th row:** As 42nd row.

**57th to 64th rows:** Rep 33rd and 34th rows 4 times more.

Rep last 64 rows 5 times more. Cast off.

#### PANEL B (make 4)

With MC, cast on 20 sts.

**1st row:** (RS). Knit.

**2nd row:** Purl.

**3rd to 8th rows:** Rep 1st and 2nd rows 3 times more.

**9th row:** With MC, K5. With B, K10. With MC, K5.

**10th row:** With MC, P5. With B, (K1. P1) 5 times. With MC, P5.

**11th row:** With MC, K5. With B, (P1. K1) 5 times. With MC, K5.

**12th to 23rd rows:** Rep 10th and 11th rows 6 times more.

**24th row:** As 10th row.

**25th to 32nd rows:** With MC, rep 1st and 2nd rows 4 times more.

**33rd row:** With A, K5. With MC, K10. With A, K5.

**34th row:** With A, P5. With MC, P10. With A, P5.

**35th to 64th rows:** Rep 33rd and 34th rows 15 times more.

Rep last 64 rows 5 times more. Cast off.

### FINISHING

Sew Panels tog as follows: (Panel B, Panel A) 3 times, Panel B, taking care to match pattern placement (see diagram on page 3).

**Top and Bottom edging:** With RS facing, MC and circular needle, pick up and knit 181 sts evenly across top edge of Afghan.

**Do not** join. Working back and forth across needle in rows, proceed as follows:  
**1st row:** (WS). \*K1. P1. Rep from \* to last st. K1.

Rep last row for Seed St Pat 4 times more. Cast off in pat.

Rep across bottom edge of Afghan.

**Side edging:** With RS facing, MC and circular needle, pick up and knit 219 sts evenly across side edge of Afghan.

**Do not** join. Working back and forth across needle in rows, proceed as follows:  
**1st row:** (WS). \*K1. P1. Rep from \* to last st. K1.

Rep last row for Seed St Pat 4 times more. Cast off in pat.

Rep across opposite side of Afghan.

### PILLOW

#### **PANEL A** (make 2)

With A, cast on 10 sts. With MC, cast on 20 sts. With A, cast on 10 sts. 40 sts.

**1st row:** (RS). With A, K10. With MC, K20. With A, K10.

**2nd row:** With A, P10. With MC, P20. With A, P10.

**3rd to 8th rows:** Rep 1st and 2nd rows 3 times more.

**9th row:** With A, K10. With MC, K5. With B, K10. With MC, K5. With A, K10.

**10th row:** With A, P10. With MC, P5. With B, (K1. P1) 5 times. With MC, P5. With A, P10.

**11th row:** With A, K10. With MC, K5. With B, (P1. K1) 5 times. With MC, K5. With A, K10.

**12th to 23rd rows:** Rep 10th and 11th rows 6 times more.

**24th row:** As 10th row.

**25th to 32nd rows:** Rep 1st and 2nd rows 4 times more.

**33rd row:** With A, K15. With MC, K10. With A, K15.

**34th row:** With A, P15. With MC, P10. With A, P15.

**35th to 40th rows:** As 33rd and 34th rows 3 times more.

**41st row:** With B, K10. With A, K5. With MC, K10. With A, K5. With B, K10.

**42nd row:** With B, (K1. P1) 5 times. With A, P5. With MC, P10. With A, P5. With B, (P1. K1) 5 times.

**43rd row:** With B, (K1. P1) 5 times. With A, K5. With MC, K10. With A, K5. With B, (P1. K1) 5 times.

**44th to 55th rows:** Rep 42nd and 43rd rows 6 times more.

**56th row:** As 42nd row.

**57th to 64th rows:** Rep 33rd and 34th rows 4 times more.

**65th to 96th rows:** Rep 1st to 32nd rows. Cast off.

#### **PANEL B** (make 4)

With MC, cast on 20 sts.

**1st row:** (RS). Knit.

**2nd row:** Purl.

**3rd to 8th rows:** Rep 1st and 2nd rows 3 times more.

**9th row:** With MC, K5. With B, K10. With MC, K5.

**10th row:** With MC, P5. With B, (K1. P1) 5 times. With MC, P5.

**11th row:** With MC, K5. With B, (P1. K1) 5 times. With MC, K5.

**12th to 23rd rows:** Rep 10th and 11th rows 6 times more.

**24th row:** As 10th row.

**25th to 32nd rows:** With MC, rep 1st and 2nd rows 3 times more.

**33rd row:** With A, K5. With MC, K10. With A, K5.

**34th row:** With A, P5. With MC, P10. With A, P5.

**35th to 64th rows:** Rep 33rd and 34th rows 15 times more.

**65th to 96th rows:** Rep 1st to 32nd rows. Cast off.

### FINISHING

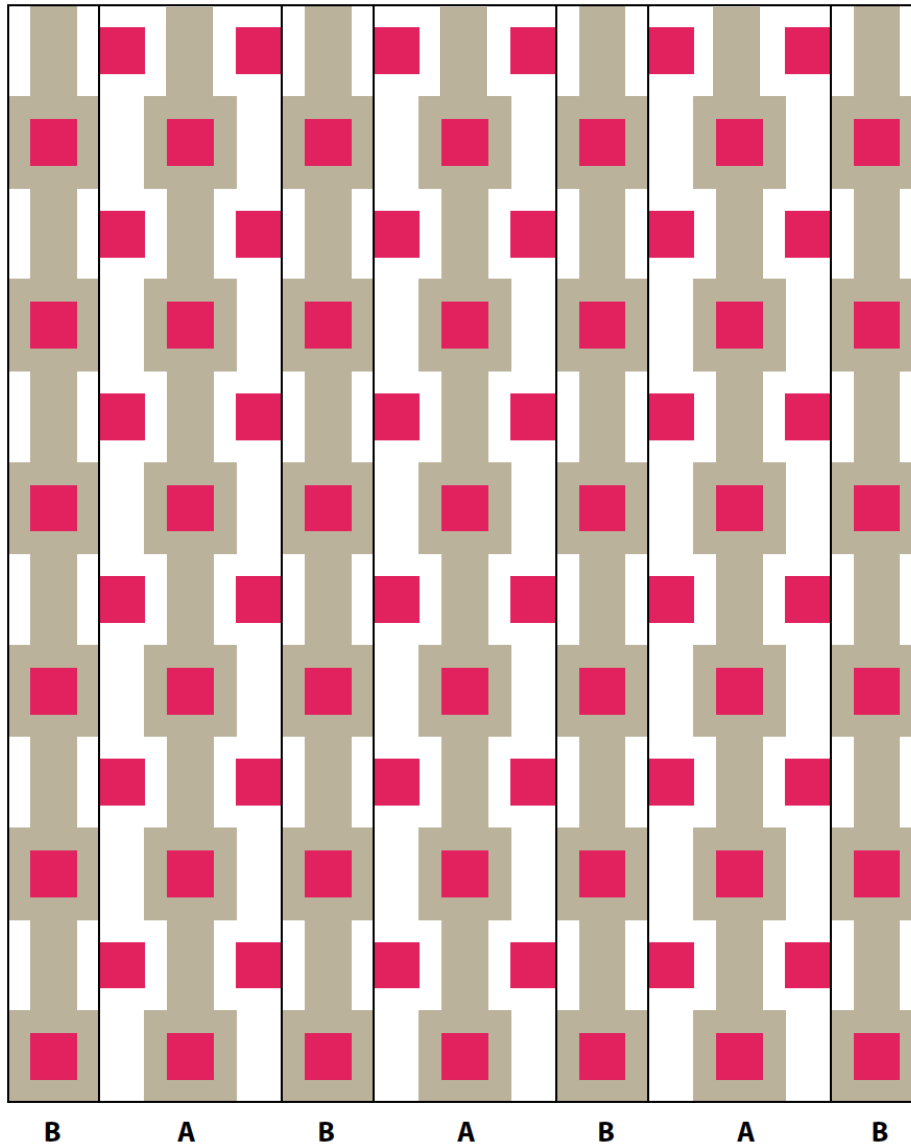
Sew Panels tog for Front as follows: Panel B. Panel A. Panel B.

Rep for Back (see diagram on page 3).

### FINISHING

Sew 3 sides of Front and Back tog. Insert pillow form. Sew rem side closed.

**AFGHAN DIAGRAM**



**PILLOW DIAGRAM**

