



KNIT | SKILL LEVEL: **INTERMEDIATE**

ABBREVIATIONS

Approx = Approximate(ly)

Beg = Begin(ing)

Cont = Continue(ity)

K = Knit

Kfb = Increase 1 stitch by knitting into front and back of next stitch

K1tbl = Knit next stitch through back loop

K2tog = Knit 2 stitches together

P = Purl

Rem = Remain(ing)

Rep = Repeat

Rnd(s) = Round(s)

St(s) = Stitch(es)

SIZE

One size to fit Adult.

GAUGE

18 sts and 24 rows = 4" [10 cm] in stocking st with larger needles.

INSTRUCTIONS

With smaller needle and MC, cast on 94 sts. Join to beg working in rnd, placing marker on first st.

1st rnd: *K1tbl. P1. Rep from * around. Break MC. Join A.

With A, rep last rnd (K1tbl. P1) ribbing for 3" [7.5 cm] from beg. Change to larger needle.

Next rnd: K2. Inc 1. *K9. Inc 1. Rep from * to last st. K1. 104 sts.

Beg working Chart, reading rnds

from right to left, noting 4 st rep will be worked 26 times. Rep rnds 1 to 4 until hat from beg measures approx 8" [20.5 cm].

Cont working rnds 5 to 13 of Chart II, switching to larger set of double pointed needles when appropriate. 26 sts rem. Break yarn, leaving a long end. Draw end tightly through rem loops and fasten securely.

MATERIALS

Bernat® Super Value™ (7 oz/197 g; 440 yds/402 m)

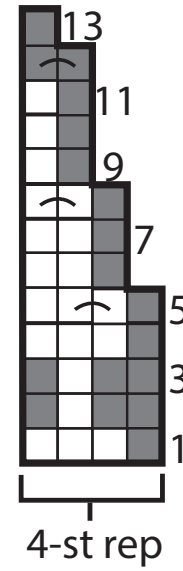
Main Color (MC) True Gray (53044) **1 ball**

Contrast A Black (07421) **1 ball**

Sizes U.S. 7 (4.5 mm) and U.S. 8 (5 mm) circular knitting needles 16" [40.5 cm] long. Set of 4 size U.S. 8 (5 mm) double-pointed knitting needles **or size needed to obtain gauge.** Stitch marker.



Chart



- = Main Color (MC)
- = Contrast A
- ☞ = With MC, K2tog
- ☞ = With A, K2tog