



KNIT | SKILL LEVEL: INTERMEDIATE

ABBREVIATIONS

Beg = Begin(ning)(s)

Cont = Continue(ity)

Dec = Decreasing

Inc = Increasing

K = Knit

K2tog = Knit next 2 stitches together

P = Purl

P2tog = Purl next 2 stitches together

P2togtbl = Purl next 2 stitches together through back loops

Pat = Pattern

Rem = Remaining

Rep = Repeat

RS = Right side

Ssk = Slip next 2 stitches knitwise one at a time. Pass them back onto left-hand needle, then knit through back loops together

St(s) = Stitch(es)

WS = Wrong side

SIZES

To fit chest measurement

6 mos 17" [43 cm]

12 mos 18" [45.5 cm]

18 mos 19" [48 cm]

24 mos 20" [51 cm]

Finished chest

6 mos 20" [51 cm]

12 mos 22" [56 cm]

18 mos 24" [61 cm]

24 mos 26" [66 cm]

GAUGES

20 sts and 26 rows = 4" [10 cm] with larger needles in stocking st

INSTRUCTIONS

The instructions are written for smallest size. If changes are necessary for larger size(s) the instructions will be written thus (.). When only one number is given it applies to all sizes.

MATERIALS

Bernat® Bundle Up™ (4.9 oz/140 g; 267 yds/244 m)

Sizes	6	12	18	24	mos
Main Color (MC) Dove (74022)	1	1	2	2	ball(s)
Contrast A Marshmallow (74001)	1	1	1	1	ball
Contrast B Duckling (74019)	1	1	1	1	ball

Sizes U.S. 7 (4.5 mm) and U.S. 8 (5 mm) knitting needles or size needed to obtain gauge. 4 stitch holders. Yarn needle.

FRONT

Note: When working from chart, wind small balls of the colors to be used, one for each separate area of color in the design. Start new colors at appropriate points. To change colors, twist the 2 colors around each other where they meet on WS to avoid a hole.

With A and smaller needles, cast on **49 (55-59-65) sts.

1st row: (RS). K1. *P1. K1. Rep from * to end of row. Break A. Join MC.

2nd row: With MC, P1. *K1. P1. Rep from * to end of row.

With MC, rep last 2 rows of (K1. P1) ribbing twice more.**

Change to larger needles and work 16 rows in stocking, ending on a purl row.

Place Chart: 1st row: (RS). With MC, K**12 (12-11-14)**. Work 1st row of Chart I (II-III-III) across next **25 (31-37-37)** sts, reading row from right to left. With MC, K**12 (12-11-14)**.

2nd row: (WS). With MC, P**12 (12-11-14)**. Work 2nd row of Chart I (II-III-III) across next **25 (31-37-37)** sts, reading row from left to right. With MC, P**12 (12-11-14)**.

Chart is now in position. Cont working chart until **20th (26th-30th-34th)** row of Chart has been completed. Chart I is shown on page 3. Charts II and III are shown on page 4.

Note: At end of Chart, break B and cont with MC only in stocking st.

Shape raglans: Keeping cont of Chart, proceed as follows:

Cast off **2 (3-3-4)** sts beg next 2 rows. **45 (49-53-57)** sts.

1st and 2nd rows: Work even.

3rd row: (RS). K2. ssk. Pat to last 4 sts. K2tog. K2.

4th row: Work even.

Rep last 4 rows **1 (1-3-4)** time(s) more. **41 (45-45-47)** sts.

1st row: (RS). K2. ssk. Pat to last 4 sts. K2tog. K2.

2nd row: Work even.

Rep last 2 rows **5 (6-3-3)** times more. **29 (31-37-39)** sts.

Shape neck: 1st row: (RS). K2. ssk. K**6 (6-9-9)**. **Turn.** Leave rem sts unworked.

2nd row: P2tog. Purl to end of row. **8 (8-11-11)** sts.

3rd row: ssk. Knit to last 2 sts. K2tog. **6 (6-9-9)** sts.

4th row: As 2nd row. **5 (5-8-8)** sts.

Sizes 18 and 24 mos only:

5th row: K2. ssk. K2. K2tog. 6 sts.

6th row: P2tog. Purl to end of row. 5 sts.

All sizes: Next row: (RS). ssk. K3. 4 sts.

Next row: P4.

Next row: ssk. K2.

Next row: P3.

Next row: ssk. K1.

Next row: P2.

Next row: ssk. Fasten off.

With RS facing, slip next **9 (11-11-13)** sts onto a st holder. Join MC to rem sts and proceed as follows:

1st row: (RS). Knit to last 4 sts. K2tog. K2. **9 (9-12-12)** sts.

2nd row: Purl to last 2 sts. P2togtbl. **8 (8-11-11)** sts.

3rd row: ssk. Knit to last 4 sts. K2tog. K2. **6 (6-9-9)** sts.

4th row: As 2nd row. **5 (5-8-8)** sts.

Sizes 18 and 24 mos only:

5th row: ssk. K2. K2tog. K2. 6 sts.

6th row: Purl to last 2 sts. P2togtbl. 5 sts.

All sizes: Next row: (RS). K3. K2tog. 4 sts.

Next row: P4.

Next row: K2. K2tog.

Next row: P3.

Next row: K1. K2tog.

Next row: P2.

Next row: K2tog. Fasten off.

BACK

Work from ** to ** as given for Front.

Change to larger needles and work **36 (42-46-50)** rows in stocking st, ending on a purl row.

Shape raglans: Cast off **2 (3-3-4)** sts beg next 2 rows. **45 (49-53-57)** sts.

1st row: Knit.

2nd row: Purl.

3rd row: K2. ssk. Knit to last 4 sts. K2tog. K2.

4th row: Purl.

Rep last 4 rows **1 (1-3-4)** time(s) more. **41 (45-45-47)** sts.

1st row: K2. ssk. Knit to last 4 sts. K2tog. K2.

2nd row: Purl.

Rep last 2 rows **10 (11-9-9)** times more.

Leave rem **19 (21-25-27)** sts on a st holder.

SLEEVES

Sleeve Stripe Pat

(With A – 2 rows. With MC - 2 rows) twice.

With B – 2 rows.

With MC - 2 rows.

These 12 rows form Stripe Pat.

With A and smaller needles, cast on **29 (29-35-35)** sts.

Work 6 rows in (K1. P1) ribbing as given for Front and inc **0 (2-0-2)** sts evenly across last row. **29 (31-35-37)** sts. Break MC.

Beg working Stripe Pat in stocking st, inc 1 st each end of needle on 3rd and every following 12th row until there are **35 (37-41-43)** sts.

Cont even in Stripe Pat until work from beg measures **6½ (7½-8-8½)**" [**16.5 (19-20.5-21.5)** cm], ending on a purl row.

Shape raglans: Keeping cont of Stripe Pat, cast off **2 (3-3-4)** sts beg next 2 rows. **31 (31-35-35)** sts.

1st row: Knit.

2nd row: Purl.

3rd row: K2. ssk. Knit to last 4 sts. K2tog. K2.

4th row: Purl.

Rep last 4 rows **2 (3-3-5)** times more. **25 (23-27-23)** sts.

1st row: K2. ssk. Knit to last 4 sts. K2tog. K2.

2nd row: Purl.

Rep last 2 rows **8 (7-9-7)** times more.

Leave rem 7 sts on a st holder.

FINISHING

Sew raglan seams, leaving left back raglan seam open.

Neckband: With RS facing, smaller needles and MC, K7 from left sleeve st holder dec 1 st at center. Pick up and knit **10 (10-12-12)** sts down left front neck edge. K**9 (11-11-13)** from Front st holder. Pick up and knit **10 (10-12-12)** sts up right front neck edge. K7 from right sleeve st holder, dec 1 st at center. K**19 (21-25-27)** from Back st holder, dec 1 st at center. **59 (63-71-75)** sts.

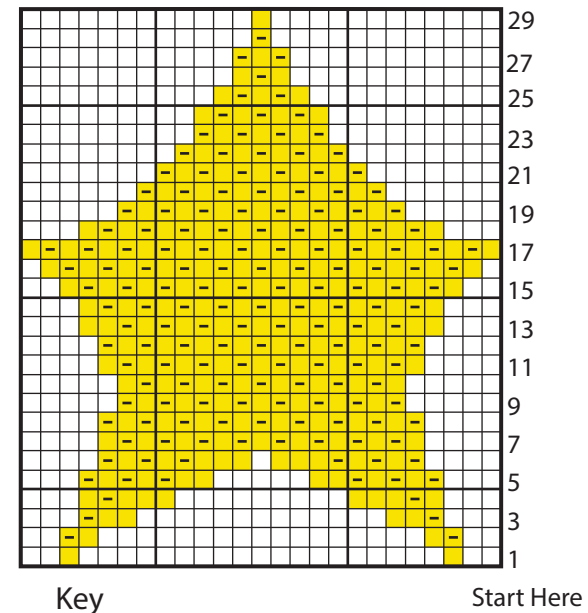
Beg on a 2nd row, work 4 rows (K1. P1) ribbing as given for Front. Break MC.

With A, work 1 row (K1. P1) ribbing. Cast off in rib.

Sew left back raglan and neckband seam.

Sew sleeve and side seams.

Chart I for size 6 mos



- = MC, knit on RS rows.
Purl on WS rows.
- = Contrast B, knit on RS rows.
Purl on WS rows.
- ▣ = Contrast B, purl on RS rows.
Knit on WS rows.

Chart II for size 12 mos

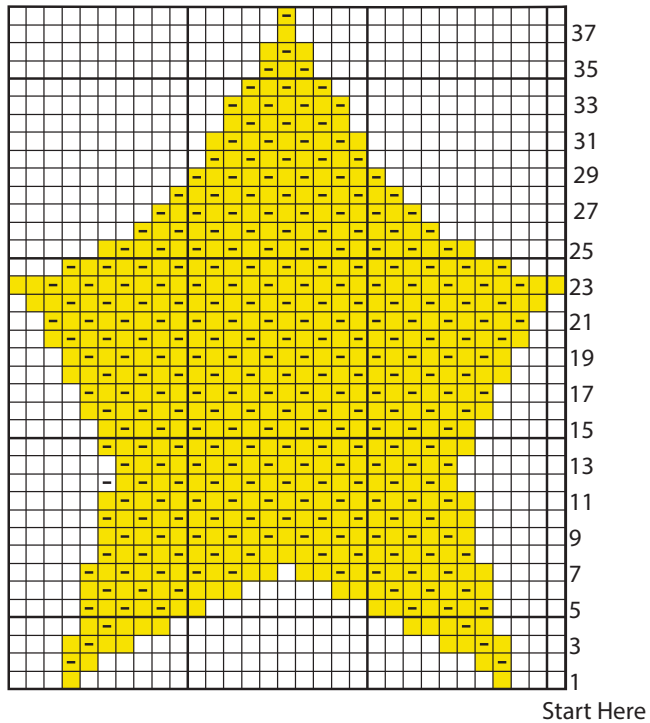
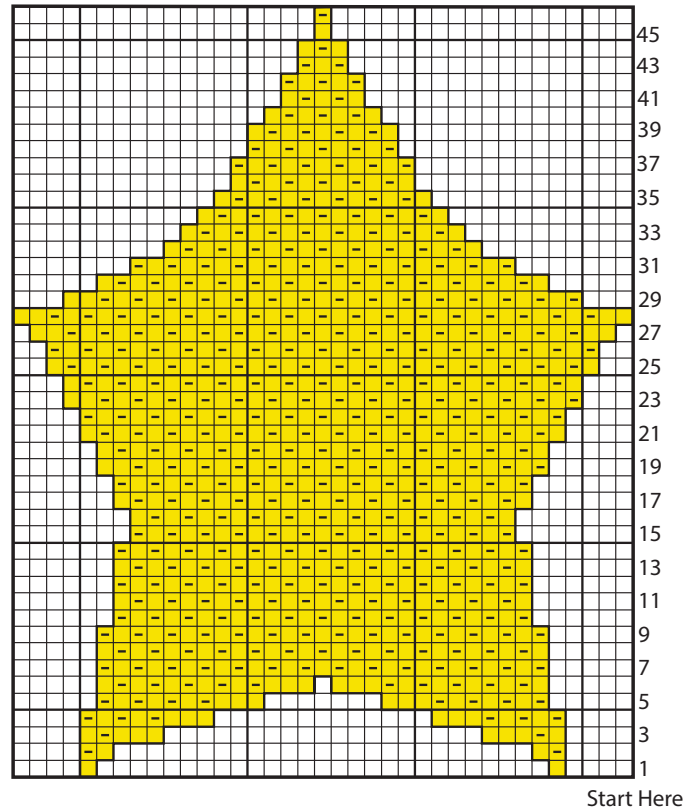


Chart III for sizes 18 and 24 mos



Key

- = MC, knit on RS rows.
Purl on WS rows.
- = Contrast B, knit on RS rows.
Purl on WS rows.
- ◻ = Contrast B, purl on RS rows.
Knit on WS rows.



Front



Back