



SIZES

To fit chest measurement	
4	23 ins [58.5 cm]
6	25 ins [63.5 cm]
8	26½ ins [67.5 cm]
10	28 ins [71 cm]

Finished chest	
4	30 ins [76 cm]
6	32 ins [81.5 cm]
8	34 ins [86.5 cm]
10	36 ins [91.5 cm]

Hat: To fit child **4/6 (8/10)** yrs.

GAUGE

11 sts and 16 rows = 4 ins [10 cm] with larger needles in stocking st.

MATERIALS

Bernat® Roving (100 g/3.5 oz; 109 m/120 yds)						
Sizes		4	6	8	10	
JACKET AND HAT						
	Main Color (MC) #00011 (Bark)	3	4	5	6	Balls
	Contrast A #00100 (Rice Paper)	1	2	2	2	Ball(s)
	Contrast B #00067 (Cranberry)	1	1	1	1	Ball
	Contrast C #00091 (Quince)	1	1	1	1	Ball
<p>Jacket: Sizes 6 mm (U.S. 10) and 6.5 mm (U.S. 10½) circular knitting needles 24 ins [60 cm] long. Sizes 6 mm (U.S. 10) and 6.5 mm (U.S. 10½) knitting needles or size needed to obtain gauge. Separating zipper.</p> <p>Hat: Set of four size 6.5 mm (U.S. 10½) double-pointed needles or size needed to obtain gauge. Size 6.5 mm (U.S. J or 10½) crochet hook.</p>						



FREE ebook
Featuring Bernat® Roving

E-BOOK DOWNLOADS

- Tuff Toddler
- Hot Cocoa Cardigan and Hat
- Reindeer Games
- Hardcore
- Skull Hoodie
- Thunderbird
- Cold Snap

HELPFUL LINKS

- Abbreviations
- Skill level info
- Yarn info
- Needle conversion charts

2. HOT COCOA CARDIGAN AND HAT

INSTRUCTIONS

The instructions are written for smallest size. If changes are necessary for larger sizes the instructions will be written thus (.). Numbers for each size are shown in the same color throughout the pattern. When only one number is given in black, it applies to all sizes.

BODY

Note: Body is worked in one piece to armholes.

With MC and smaller circular needle, cast on **91 (95-103-111)** sts. **Do not** join. Working back and forth across need in rows, proceed as follows:

1st row: (RS). *K1. P1. Rep from * to last st. K1.

2nd row: *P1. K1. Rep from * to last st. P1.

Rep last 2 rows of (K1. P1) ribbing for 2 ins [5 cm], ending with a 2nd row and inc 1 st at center of last row. **92 (96-104-112)** sts.

Change to larger needle and proceed in stocking st for 2 rows.

Next row: (RS). *With A, K1. With MC, K1. Rep from * to end of row.

Next row: *With A, P1. With C, P1. Rep from * to end of row.

Work Chart I in stocking st to end of chart, noting 7 st rep will be worked **13 (13-14-16)** times.

Next row: (RS). *With A, K1. With C, K1. Rep from * to end of row.

Next row: *With A, P1. With MC, P1. Rep from * to end of row.

With MC, work **6 (8-10-14)** rows even.

Work Chart II in stocking st to end of chart, noting 8 st rep will be worked **11 (12-13-14)** times.

With MC, work **6 (8-8-12)** rows even.

Divide for raglan shaping: Next row: (RS). **K21 (22-24-26)**. Cast off 4 sts. **K42 (44-48-52)** (including st on needle after cast off). Cast off 4 sts. **K21 (22-24-26)** (including st on needle after cast off).

Left Front: Cont on last **21 (22-24-26)** sts.

Purl 1 row.

Work Chart III in stocking st to end of chart. **13 (14-16-18)** sts.

With MC, purl 1 row.

Shape neck: Next row: (RS). Work 2tog. Knit to last **6 (5-6-7)** sts. Cast off rem **6 (5-6-7)** sts.

Rejoin MC and purl 1 row.

Dec 1 st at each end of next row and following alt row(s) **1 (2-2-2)** time(s) more. **2 (2-3-4)** sts.

Sizes 8 and 10 only: Dec 1 st at raglan edge only on next row and following alt row (**0-1**) time more. 2 sts rem.

All sizes: Next row: P2.

Next row: K2tog. Fasten off.

Back: With WS facing, join MC to **42 (44-48-52)** sts.

Purl 1 row.

Work Chart IV in stocking st to end of chart. **26 (28-32-36)** sts.

With MC, purl 1 row.

Dec 1 st each end of next row and following alt rows **2 (3-4-5)** times more. Cast off rem **20 (20-22-24)** sts.

Right Front: With WS facing, join MC to **21 (22-24-26)** sts.

Purl 1 row.

Work Chart V in stocking st to end of chart. **13 (14-16-18)** sts.

With MC, purl 1 row.

Shape neck: Next row: (RS). Cast off **6 (5-6-7)** sts. Knit to last 2 sts. Work 2tog.

Purl 1 row.

Dec 1 st at each end of next row and following alt row(s) **1 (2-2-2)** time(s) more. **2 (2-3-4)** sts.

Sizes 8 and 10 only: Dec 1 st at raglan edge only on next row and following alt row (**0-1**) time more. 2 sts rem.

All sizes: Next row: P2.

Next row: K2tog. Fasten off.

SLEEVES

With MC and smaller needles cast on **27 (27-29-29)** sts. Work 2 ins [5 cm] in (K1. P1) ribbing as given for Body, ending on a 2nd row and inc 1 st at center of last row. **28 (28-30-30)** sts.

Change to larger needles and proceed in stocking st for 2 rows.

Work Chart VI in stocking st to end of chart, noting side incs on 7th row. **30 (30-32-32)** sts.

With MC, cont in stocking st inc 1 st each end of following **12th (10th-12th-10th)** row(s) from previous inc until there are **32 (34-36-38)** sts. Cont even until work from beg measures **10 (11½-13-15)** ins [**25.5 (29-33-38)** cm], ending with a purl row.

Work Chart VII in stocking st to end of chart. Cast off rem **6 (6-8-8)** sts.

FINISHING

Sew raglan seams. Sew sleeve seams.

Zipper edging: With RS facing, smaller needles and MC, pick up and knit **42 (45-50-56)** sts up right front edge. Knit 2 rows (garter st). Cast off knitwise (WS). Rep across left front edge.

Collar: With MC and smaller needles, cast on 3 sts.

1st row: (RS). Sl1. (Inc 1 st in next st) twice. 5 sts.

2nd row: Sl1. Knit to end of row.

3rd row: Sl1. Inc 1 st in next st. Knit to last 2 sts. Inc 1 st in next st. K1.

4th row: Sl1. Knit to end of row.

Rep last 2 rows 7 times more. 21 sts. Place marker at each end of needle.

Cont in garter st (knit every row) until Collar from markers measures **10 (10½-11-11½)** ins [**25.5 (26.5-28-29.5)** cm], ending with a WS row.

Next row: Sl1. K2tog. Knit to last 2 sts. K2tog.

Next row: Sl1. Knit to end of row.

Rep last 2 rows 8 times more. 3 sts. Cast off.

Sew Collar to neck edge. Sew in zipper.

HAT

Beg at top, with set of four needles and MC, cast on 4 sts.

1st rnd: (Inc 1 st in next st) 4 times. 8 sts. Divide sts evenly onto 3 needles (3, 3, 2) sts. Join in rnd, placing a marker on first st.

2nd and alt rnds: Knit.

3rd rnd: *Inc 1 st in next st. Rep from * around. 16 sts.

5th rnd: *Inc 1 st in next st. K1. Rep from * around. 24 sts.

7th rnd: *Inc 1 st in next st. K2. Rep from * around. 32 sts.

9th rnd: *Inc 1 st in next st. K3. Rep from * around. 40 sts.

Cont in this manner, inc 8 sts evenly around following alt rnds until there are **56 (64)** sts.

Next rnd: Knit.

Size 4/6 only: Next rnd: *Inc 1 st in next st. K13. Rep from * around. 60 sts.

Both sizes: Next rnd: *With A, K1. With B, K1. Rep from * around.

Next rnd: With A, knit inc **0 (1)** st in center of rnd. **60 (65)** sts.

Work Chart VIII to end of chart, noting 5 st rep will be worked **12 (13)** times.

Next rnd: With A, knit dec **0 (1)** st in center of rnd. **60 (64)** sts.

Next rnd: *With A, K1. With B, K1. Rep from * around.

With MC, knit 4 rnds.

Divide for Earflaps: Next rnd: Cast off 6 sts. **K15 (16)** (including st on needle after cast off). Cast off **18 (20)** sts. **K15 (16)** (including st on needle after cast off). Cast off rem 6 sts.

First Earflap: With RS facing, rejoin MC to **15 (16)** sts. Working back and forth across 2 needles in rows, work 4 rows stocking st.

Next row: (RS). K1. K2tog. Knit to last 3 sts. ssk. K1.

Next row: Purl.

Rep last 2 rows **4 (5)** times more. **5 (4)** sts rem.

Next row: K1. **K3 (2)** tog. K1.

Next row: P3.

Next row: K3tog. Fasten off.

Second Earflap: Work as for First Earflap.

FINISHING

Crochet Edging: With RS facing and crochet hook, join B with sl st at center back. Ch 1. Work 1 rnd of sc evenly around lower edge of Hat and Earflaps working 3 sc in each point of Earflap. Join with sl st to first sc.

Braid Ties: Cut 12 lengths of B 22 ins [56 cm] long. Taking 6 strands tog, fold in half and knot into fringe at point of Earflap. Divide these strands into 3 groups (4 strands each). Braid into tie approx 8 ins [20.5 cm] long. Secure ends tightly. Trim ends evenly. Rep in rem Earflap.

Braid Tassel: Cut 12 lengths of B 15 ins [38 cm] long. Divide these strands into 3 groups (4 strands each). Braid into approx 12 ins [30.5 cm] length. Secure both ends tightly. Trim ends evenly. Attach center of Braid to top of Hat.

Chart I

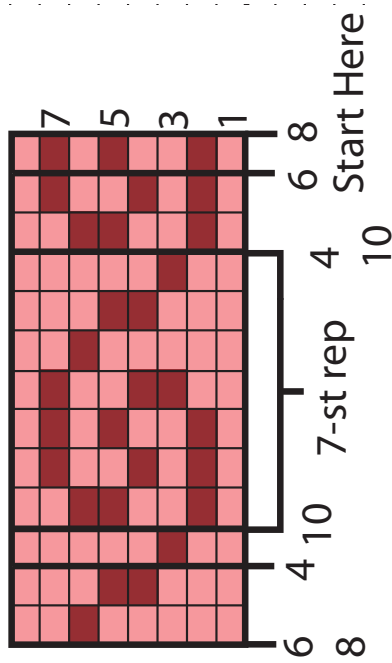


Chart II

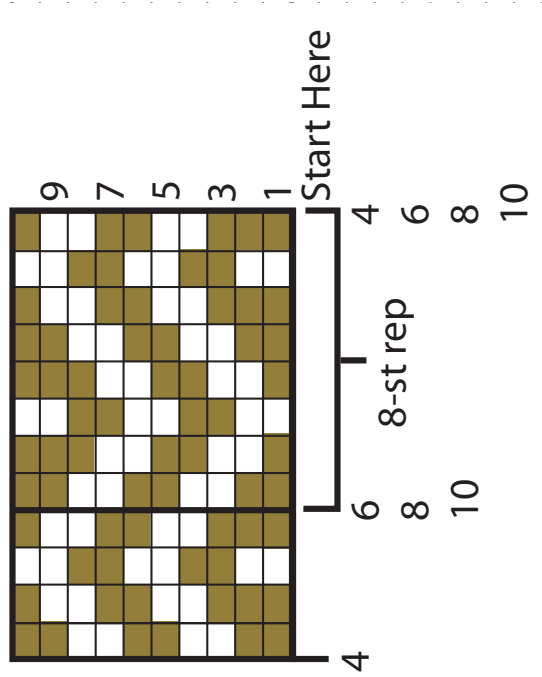


Chart V

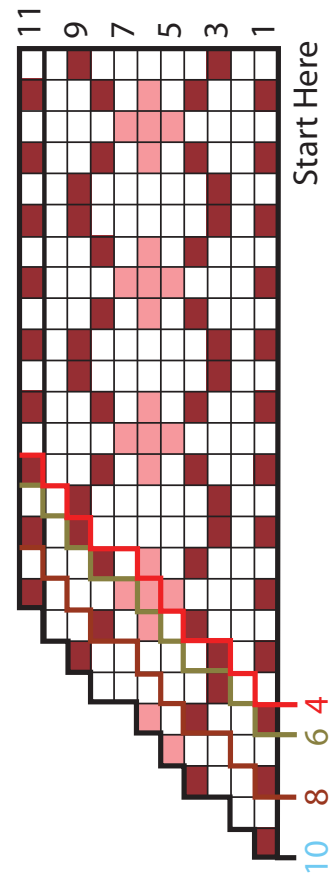


Chart III

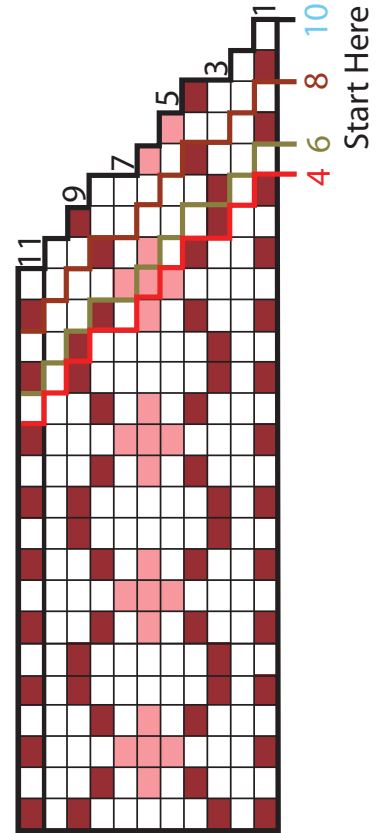


Chart IV

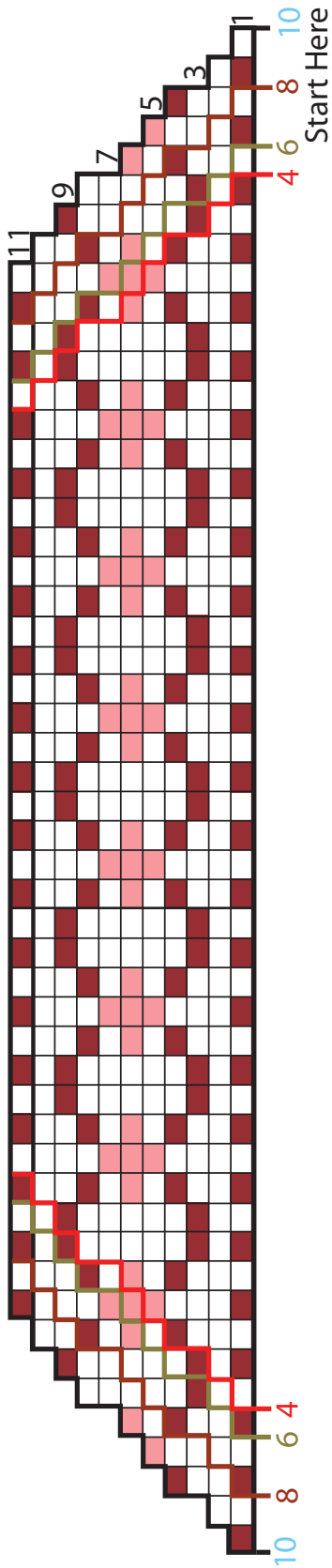


Chart VI

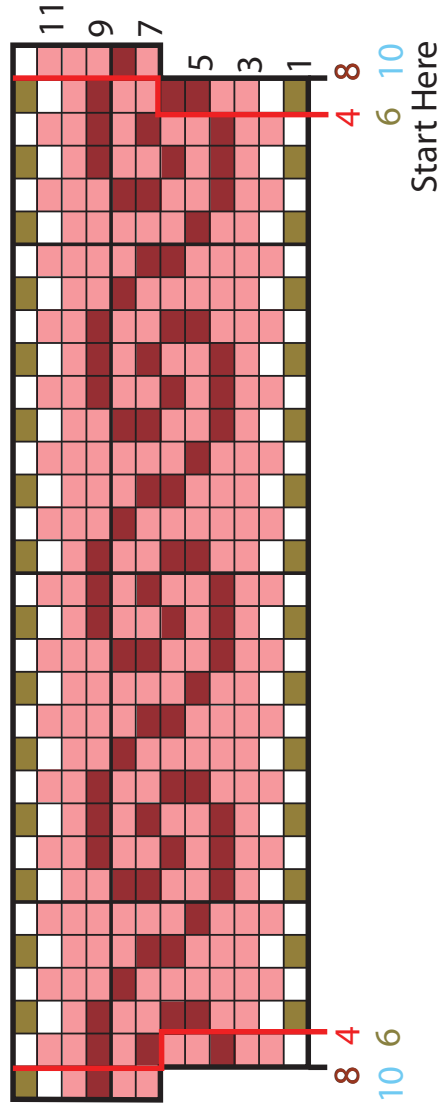


Chart VIII

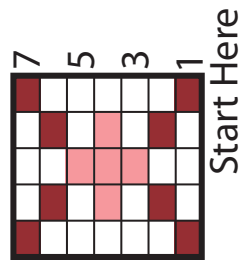


Chart VII

