



MATERIALS

Bernat® Satin® (3.5 oz/100 g; 200 yds/182 m)

Main Color (MC) Aqua (04201) **1 ball**

Contrast A Teal (04203) **1 ball**

Sizes U.S. 6 (4 mm) and U.S. 7 (4.5 mm) knitting needles **or size needed to obtain gauge.** Stitch holder.

ABBREVIATIONS:

Alt = Alternate(ing)

Beg = Beginning

Cont = Continue(ity)

Dec = Decrease(ing)

Kfb = Increase 1 stitch by knitting into front and back of next stitch.

K = Knit

K2tog = Knit next 2 stitches together

P = Purl

P = Purl

Rem = Remaining

Rep = Repeat

RS = Right side

Ssk = Slip next 2 stitches knitwise one at a time. Pass them back onto left-hand needle, then knit through back loops together.

St(s) = Stitch(es)

Tog = Together

WS = Wrong side

 **KNIT** | SKILL LEVEL: EASY

SIZES

Width around palm:

2/4 yrs **5¼" [13 cm]**

6/8 yrs **6" [15 cm]**

10/12 yrs **7" [18 cm]**

GAUGE

19 sts and 25 rows = 4" [10 cm] with larger needles in stocking st.

INSTRUCTIONS

RIGHT MITTEN **With smaller needles and MC, cast on **27 (31-35)** sts.

1st row: K1. *P1. K1. Rep from * to end of row.

2nd row: P1. *K1. P1. Rep from * to end of row.

Rep last 2 rows (K1. P1) ribbing for **1½ (2-2)" [4 (5-5) cm]**, ending on a 2nd row and dec 1 st at center of last row. **26 (30-34)** sts.

Change to larger needles and work **4 (6-6)** rows even in stocking st.**

Shape thumb gusset: 1st row: (RS). K**15 (17-19)**. (Kfb) twice. Knit to end of row.

2nd and alt rows: Purl.

3rd row: K**15 (17-19)**. Kfb. K2. Kfb. Knit to end of row.

5th row: K**15 (17-19)**. Kfb. K4. Kfb. Knit to end of row. **32 (36-40)** sts.

6th row: Purl.

Sizes 6/8 and 10/12 only: 7th row: K(**17-19**). Kfb. K6. Kfb. Knit to end of row. (**38-42**) sts.

8th row: Purl.

Size 10/12 only: 9th row: K19. Kfb. K8. Kfb. Knit to end of row. 44 sts.

10th row: Purl.

All sizes: Next row: (RS). K**23 (27-31)**. **Turn.** Cast on 2 sts. Slip rem sts onto st holder.

*****Thumb: Next row:** P**10 (12-14)**. **Turn.** Leave rem sts on st holder.

Cont in stocking st on these **10 (12-14)** sts until Thumb from cast on row measures **1 (1½-2)" [2.5 (4-5) cm]**, ending on a purl row.

Next row: (RS). *K2tog. Rep from * to end of row. **5 (6-7)** sts. Break yarn, leaving a long end. Thread end through rem **5 (6-7)** sts. Draw up and fasten securely. Sew Thumb seam.

With RS facing, join MC to rem sts on st holder and knit to end of row.

Next row: Purl, picking up 2 sts purlwise at base of Thumb. **26 (30-34)** sts.

Cont even until work after ribbing measures **3½ (4½-5½)" [9 (11.5-14) cm]**, ending on a purl row.

Shape top: 1st row: (RS). K1. [K1. ssk. K**6 (8-10)**. K2tog. K1] twice. K1. **22 (26-30)** sts.

2nd and alt rows: Purl.

3rd row: K1. [K1. ssk. K**4 (6-8)**. K2tog. K1] twice. K1. **18 (22-26)** sts.

5th row: K1. [K1. ssk. K**2 (4-6)**. K2tog. K1] twice. K1. **14 (18-22)** sts.

Sizes 6/8 and 10/12 only: 6th row: Purl.

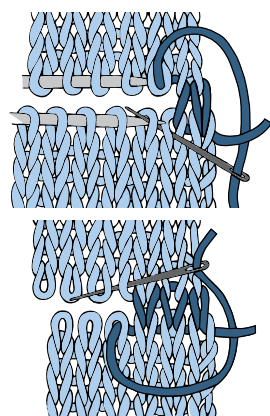
7th row: K1. [K1. ssk. K**2-4**. K2tog. K1] twice. K1. **(14-18)** sts.

Size 10/12 only: 8th row: Purl.

9th row: K1. (K1. ssk. K2. K2tog. K1) twice. K1. 14 sts.

All sizes: Graft 2 sets of 7 sts tog. Sew side seam.***

Grafting Diagram



LEFT MITTEN

Work from ** to ** as given for Right Mitten.

Shape thumb gusset: 1st row: K**9 (11-13)**. (Kfb) twice. Knit to end of row.

2nd and alt rows: Purl.

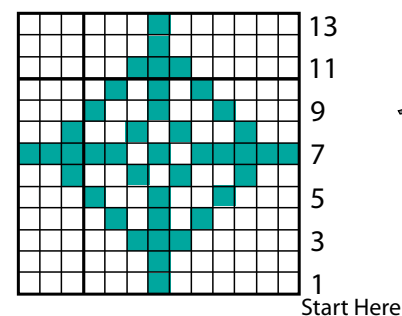
3rd row: K**9 (11-13)**. Kfb. K2. Kfb. Knit to end of row.

5th row: K**9 (11-13)**. Kfb. K4. Kfb. Knit to end of row. **32 (36-40)** sts.

6th row: Purl.

Sizes 6/8 and 10/12 only: 7th row: K(**11-13**). Kfb. K6. Kfb. Knit to end of row. **(38-42)** sts.

8th row: Purl.



Key

□ = Main Color (MC)

■ = Contrast A

Size 10/12 only: 9th row: K13. Kfb. K8. Kfb. Knit to end of row. 44 sts.

10th row: Purl.

All sizes: Next row: (RS). K**17 (21-25)**. **Turn.** Cast on 2 sts. Slip rem sts onto st holder.

Work from *** to *** as given for Right Mitten.

FINISHING

With A, work duplicate st embroidery on Front of Mitten, beg 4 rows above ribbing and taking care to center motif on front of Mitten.

Duplicate Stitch Diagram

