



KNIT | SKILL LEVEL: INTERMEDIATE

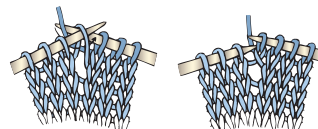
## ABBREVIATIONS

**Approx** = Approximately

**K** = Knit

**K2tog** = Knit next 2 stitches together

**M1** = Make 1 stitch by picking up horizontal loop lying before next stitch and knitting into back of loop



**Pat** = Pattern

**Rep** = Repeat

**RS** = Right side

**Sl1(2-3)Pwyib** = Slip next 1 (2-3-4) stitch(es) purlwise with yarn at back of work

**Sl1(2-3)Pwyif** = Slip next 1 (2-3-4) stitch(es) purlwise with yarn at front of work

**St(s)** = Stitch(es)

**WS** = Wrong side

## MEASUREMENT

Approx 40½" [103 cm] square.

## GAUGES

8 sts and 20 rows = 4" [10 cm] in Mosaic Pat.

7 sts and 16 rows = 4" [10 cm] in garter stitch.

## INSTRUCTIONS

**Note:** Carry MC and A loosely up side of work when not in use. **Do not** carry B when not in use.

With B, cast on 60 sts. **Do not** join. Working back and forth across needle in rows, proceed as follows:

Knit 15 rows (garter st) noting first row is RS.

**Next row:** (WS). With B, K6. \*M1. K6. Rep from \* to end of row. 69 sts. Break C.

**Proceed in Mosaic Pat as follows:** (See Mosaic Chart on pg 3)

**1st row:** (RS). With MC, knit.

**2nd row:** With MC, knit.

**3rd row:** With A, K1. Sl1Pwyib. \*K1. Sl3Pwyib. Rep from \* to last 3 sts. K1. Sl1Pwyib. K1

**4th row:** With A, K1. Sl1Pwyif. K1. \*Sl3Pwyif. K1. Rep from \* to last 2 sts. Sl1Pwyif. K1.

## MATERIALS

**Bernat® Baby Blanket™** (10.5 oz/300 g; 220 yds/201 m)

**Main Color (MC)** Starry Sky (04873)      **2 balls or 245 yds/224 m**

**Contrast B** Rocket Red (04872)      **2 balls or 245 yds/224 m**

**Bernat® Baby Blanket Sparkle™** (10.5 oz/300 g; 220 yds/201 m)

**Contrast A** Moonlight Sparkle (71001)      **1 ball or 74 yds/69 m**

Size U.S. 11 (8 mm) Susan Bates® circular knitting needle 29" [73.5 cm] long **or size needed to obtain gauge.** Susan Bates® Steel Yarn Needle.

**5th row:** With MC, K6. (Sl1Pwyib. K7. Sl1Pwyib. K15) twice. Sl1Pwyib. K7. Sl1Pwyib. K6.

**6th row:** With MC, K6. (Sl1Pwyif. K7. Sl1Pwyif. K15) twice. Sl1Pwyif. K7. Sl1Pwyif. K6.

**7th row:** With A, K1. (Sl2Pwyib. K15. Sl2Pwyib. K1. Sl3Pwyib. K1) twice. Sl2Pwyib. K15. Sl2Pwyib. K1.

**8th row:** With A, K1. Sl2Pwyif. K15. Sl2Pwyif. (K1. Sl3Pwyif. K1. Sl2Pwyif. K15. Sl2Pwyif) twice. K1.

**9th and 10th rows:** With MC, knit.  
**11th row:** With B, K1. Sl2Pwyib. \*(K1. Sl1Pwyib) 7 times. K1. Sl4Pwyib. K1. Sl4Pwyib. Rep from \* once more. (K1. Sl1Pwyib) 7 times. K1. Sl2Pwyib. K1.

**12th row:** With B, K1. Sl2Pwyif. (K1. Sl1Pwyif) 7 times. K1. \*Sl4Pwyif. K1. Sl4Pwyif. (K1. Sl1Pwyif) 7 times. K1. Rep from \* once more. Sl2Pwyif. K1. Break B.

**13th and 14th rows:** With MC, knit.

**15th row:** With A, K1. Sl3Pwyib. K13. \*(Sl3Pwyib. K1) 3 times. K13. Rep from \* once more. Sl3Pwyib. K1.

**16th row:** With A, K1. Sl3Pwyif. \*K13. (Sl3Pwyif. K1) 3 times. Rep from \* once more. Sl3Pwyif. K1.

**17th row:** With MC, K5. \*(Sl1Pwyib. K1) 5 times. Sl1Pwyib. K15. Rep from \* once more. (Sl1Pwyib. K1) 5 times. Sl1Pwyib. K5.

**18th row:** With MC, K5. \*(Sl1Pwyif. K1) 5 times. Sl1Pwyib. K15. Rep from \* once more. (Sl1Pwyib. K1) 5 times. Sl1Pwyif. K5.

**19th row:** With A, K1. Sl1wyib. \*K1. Sl2wyib. K11. Sl2wyib.\*\* (K1. Sl3wyib) twice. Rep from \* once more, then from \* to \*\* once. K1. Sl1wyib. K1.

**20th row:** With A, K1. Sl1wyif. \*K1. Sl2wyif. K11. Sl2wyif.\*\* (K1. Sl3wyif) twice. Rep from \* once more, then from \* to \*\* once. K1. Sl1wyif. K1.

**21st row:** With MC, K7. \*(Sl1Pwyib. K1) 3 times. Sl1Pwyib. K17. Rep from \* once more. (Sl1Pwyib. K1) 3 times. Sl1Pwyib. K7.

**22nd row:** With MC, K7. \*(Sl1Pwyif. K1) 3 times. Sl1Pwyib. K17. Rep from \* once more. (Sl1Pwyif. K1) 3 times. Sl1Pwyif. K7.

**23rd row:** With A, K1. \*Sl3Pwyib. K1. Sl2Pwyib. K7. Sl2Pwyib. K1.\*\* (Sl3Pwyib. K1) twice. Rep from \* once more, then from \* to \*\* once. Sl1Pwyib. K1.

**24th row:** With A, K1. \*Sl3Pwyif. K1. Sl2Pwyif. K7. Sl2Pwyif. K1.\*\* (Sl3Pwyif. K1) twice. Rep from \* once more, then from \* to \*\* once. Sl1Pwyif. K1.

**25th and 26th rows:** With MC, knit.

**27th and 28th rows:** As 3rd and 4th rows.

**29th row:** With MC, K18. (Sl1Pwyib. K7. Sl1Pwyib. K15) twice. Rep from \* once more. K3.

**30th row:** With MC, K18. (Sl1Pwyif. K7. Sl1Pwyif. K15) twice. Rep from \* once more. K3.

**31st row:** With A, K1. (Sl3Pwyib. K7) 3 times. \*Sl2Pwyib. K15. Sl2Pwyib. K1. Sl3Pwyib. K1. Rep from \* once more. (Sl3Pwyib. K1) twice.

**32nd row:** With A, (K1. Sl3Pwyif) twice. \*K1. Sl3Pwyif. K1. Sl2Pwyif. K15. Sl2Pwyif. Rep from \* once more. (K1. Sl3Pwyif) 3 times. K1.

**33rd and 34th rows:** With MC, knit.

**35th row:** With B, K1. Sl1Pwyib. (K1. Sl3Pwyib) twice. K1. \*Sl4Pwyib. (K1. Sl1Pwyib) 7 times. K1. Sl4Pwyib. K1. Rep from \* once more. (Sl3Pwyib. K1) twice. Sl1Pwyib. K1.

**36th row:** With B, K1. Sl1Pwyif. (K1. Sl3Pwyif) twice. \*K1. Sl4Pwyif. (K1. Sl1Pwyif) 7 times. K1. Sl4Pwyif. Rep from \* once more. K1. (Sl3Pwyif. K1) twice. Sl1Pwyif. K1. Break B.

**37th and 38th rows:** With MC, knit.

**39th row:** With A, K1. (Sl3Pwyib. K1) 3 times. \*Sl3Pwyib. K13. (Sl3Pwyib. K1) twice. Rep from \* once more. (Sl3Pwyib. K1) twice.

**40th row:** With A, (K1. Sl3Pwyif) twice. \*(K1. Sl3Pwyif) twice. K13. Sl3Pwyif. Rep from \* once more. (K1. Sl1Pwyif) 3 times. K1.

**41st row:** With MC, K17. \*(Sl1Pwyib. K1) 5 times. Sl1Pwyib. K13. Rep from \* once more. K4.

**42nd row:** With MC, K17. \*(Sl1Pwyif. K1) 5 times. Sl1Pwyif. K13. Rep from \* once more. K4.

**43rd row:** With A, K1. Sl1Pwyib. K1. \*(Sl3Pwyib. K1) 3 times. Sl2Pwyib. K11. Sl2Pwyib. K1. Rep from \* once more. (Sl3Pwyib. K1) 3 times. Sl1Pwyib. K1.

**44th row:** With A, K1. Sl1Pwyif. K1. \*(Sl3Pwyif. K1) 3 times. Sl2Pwyif. K11. Sl2Pwyif. K1. Rep from \* once more. (Sl3Pwyif. K1) 3 times. Sl1Pwyif. K1.



**45th row:** With MC, K19. \*(Sl1Pwyib. K1) 3 times. Sl1Pwyib. K17. Rep from \* once more. K2.

**46th row:** With MC, K19. \*(Sl1Pwyif. K1) 3 times. Sl1Pwyif. K17. Rep from \* once more. K2.

**47th row:** With A, K1. Sl3Pwyib. \*(K1. Sl3Pwyib) 3 times. K1. Sl2Pwyib. K7. Sl2Pwyib. Rep from \* once more. K1. (Sl3Pwyib. K1) 4 times.

**48th row:** With A, K1. Sl3Pwyif. \*(K1. Sl3Pwyif) 3 times. K1. Sl2Pwyif. K7. Sl2Pwyif. Rep from \* once more. K1. (Sl3Pwyif. K1) 4 times. Sl3Pwyif. Rep from \* once more. K1.

Rep 1st to 48th rows twice more, then 1st to 24th rows once. Break A.

**Next row:** (RS). With MC, knit.

**Next row:** K6. \*K2tog. K5. Rep from \* to end of row. 60 sts. Break MC.

With B, knit 16 rows (garter st). Cast off.

**Side borders:** With RS facing and B, pick up and knit 71 sts up right edge of Blanket.

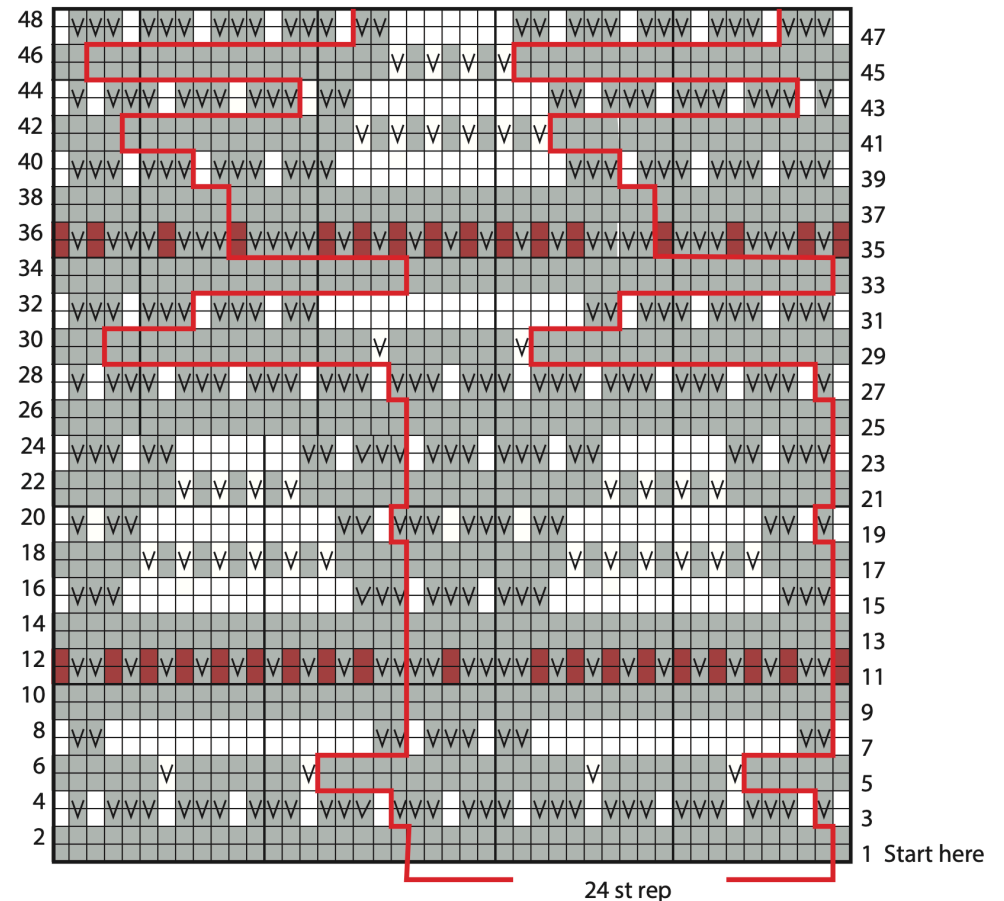
Knit 15 rows (garter st).

Cast off.

Rep for left edge of Blanket.



Mosaic Chart



Key

□ = With MC, knit.

◻ ◻ = Sl1Pwyib on RS rows,  
Sl1Pwyif on WS rows.

□ = With A, knit.

■ = With B, knit.