

BERNAT® KNIT YOKE BABY CARDIGAN AND HAT

BRK0229-033225M | April 21, 2023



MATERIALS

Bernat® Softee Baby™ (5 oz/140 g; 362 yds/331 m)

Sizes 6 12 18 24 **mos**
 Prettiest Pink (30205) **or** Aqua (30201) 2 2 2 3 **balls**

Size U.S. 6 (4 mm) Susan Bates® circular knitting needle 24" [60 cm] long. Set of 4 size U.S. 6 (4 mm) Susan Bates® double-pointed knitting needles **or size needed to obtain gauge.** Susan Bates® Split-Lock Stitch Count Markers. 3 buttons. Susan Bates® Steel Yarn Needle.



KNIT 1 SKILL LEVEL: INTERMEDIATE

ABBREVIATIONS

Alt = Alternate(ing)

Beg = Beginning

Dec = Decreasing

Cont = Continue(ity)

Inc = Increasing

K = Knit

K2tog = Knit next 2 stitches together

M1 = Make 1 stitch by picking up horizontal loop lying before next stitch and knitting into back of loop

P = Purl

PM = Place marker

Rep = Repeat

Rnd(s) = Round(s)

RS = Right side

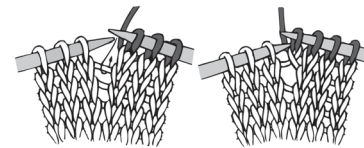
SM = Slip marker

Ssk = Slip next 2 stitches knitwise one at a time. Pass them back onto left-hand needle, then knit through back loops together

St(s) = Stitch(es)

WS = Wrong side

Yo = Yarn over



SIZES

To fit chest measurement

6 mos 17" [43 cm]

12 mos 18" [45.5 cm]

18 mos 19" [48.5 cm]

24 mos 21" [53.5 cm]

Finished chest

6 mos 23" [58.5 cm]

12 mos 24" [61 cm]

18 mos 25½" [65 cm]

24 mos 27½" [70 cm]

Hat: Two sizes, to fit baby **6-12 (18-24)** mos.

GAUGE

22 sts and 30 rows = 4" [10 cm] in stocking stitch.

INSTRUCTIONS

The instructions are written for smaller size. If changes are necessary for larger sizes the instructions will be written thus (). Numbers for each size are shown in the same color throughout the pattern. When only one number is given in black, it applies to all sizes.

CARDIGAN

Note: Garment is worked from neck edge down. When yoke is complete, Body is worked in one piece in rows. Sleeves are worked in rnds on double-pointed needles.

Body

Cast on **96 (96-100-108)** sts. **Do not** join in rnd. Working back and forth across needle in rows, proceed as follows:
Knit 5 rows (garter st), noting 1st row is WS.

Girl's Version only: Next row: (RS – buttonhole row). Knit to last 5 sts. ssk. yo. K3.

Boy's Version only: Next row: (RS – buttonhole row). K3. yo. K2tog. Knit to end of row.

Both Versions: Knit 3 rows (garter st).

Note: Work 2 more buttonholes as given above on Right Front for Girl or Left Front for Boy spaced 2" [5 cm] apart.

Proceed as follows:

1st row: (RS). K7. PM. K**14 (14-15-17)**. M1. K13. M1. K**28 (28-30-34)**. M1. K13. M1. K**14 (14-15-17)**. PM. K7. **100 (100-104-112)** sts.

2nd and alt rows: K7. SM. Purl to last 7 sts. SM. K7.

3rd row: K7. SM. K**14 (14-15-17)**. M1. K1 (PM on last st). M1. K13. M1. K1 (PM on last st). M1. K**28 (28-30-34)**. M1. K1 (PM on last st). M1. K13. M1. K1 (PM on last st). M1. K**14 (14-15-17)**. SM. K7. **108 (108-112-120)** sts.

5th row: *Knit to marked st. M1. K1. M1. Rep from * 3 times more. Knit to end of row.

6th row: K7. SM. Purl to last 7 sts. SM. K7.

Rep last 2 rows **13 (14-15-16)** times more, noting position of 2 more buttonholes. **220 (228-240-256)** sts.

Divide for Fronts, Back and Sleeves: Next row: (RS). K7. SM.

K**29 (30-32-35)** for Right Front. Cast on 3 sts. PM on 2nd cast on st. Slip next **45 (47-49-51)** sts onto length of yarn for Right Sleeve. K**58 (60-64-70)** for Back. Cast on 3 sts. PM on 2nd cast on st. Slip next **45 (47-49-51)** sts onto length of yarn for Left Sleeve. K**29 (30-32-35)**. Sm. K7 for Left Front. **136 (140-148-160)** sts for Body.

Next row: (WS). K7. SM. Purl to last 7 sts. SM. K7.

Next row: K7. Remove marker. Knit to last 7 sts, inc **2 (4-2-2)** sts evenly across. Remove marker. K7. **138 (144-150-162)** sts.

Next row: (WS). K7. Purl to last 7 sts. K7.

Proceed in pat as follows:

1st row: (RS). Knit.

2nd row: K7. P4. *K2. P4. Rep from * to last 7 sts. K7.

3rd row: Knit.

4th row: K7. P1. K2. *P4. K2. Rep from * to last 8 sts. P1. K7.

Rep last 4 rows for pat until work from joining row measures **6 (7-7½-8)" [15 (18-19-20.5) cm]**, ending on a WS row.

Next row: (RS). Knit, dec **4 (6-8-10)** sts evenly across. **134 (138-142-152)** sts.

Knit 8 rows (garter st). Cast off knitwise (WS).

Sleeves

1st rnd: (RS). With set of 4 double-pointed needles, K**45 (47-49-51)** sleeve sts. Pick up and knit 3 sts at underarm. Divide sts onto 3 needles. Join in rnd. PM after cast on st for beg of rnd. **48 (50-52-54)** sts.

Knit in rnds until work from pick up row measures **1 (1½-2-2)" [2.5 (4-5-5) cm]**.

Next rnd: K1. ssk. Knit to last 3 sts. K2tog. K1.

Knit 7 rnds even.

Rep last 8 rnds 4 times more. **38 (40-42-44)** sts.

Knit even in rnds until work from pick up row measures **6 (6½-7-8)" [15 (16-18-20.5) cm]**, dec 2 sts evenly across last rnd. **36 (38-40-42)** sts.

Next rnd: Purl.

Next rnd: Knit.

Rep last 2 rnds 3 times more. Cast off purlwise.

FINISHING

Pin garment to measurements. Cover with a damp cloth, leaving cloth to dry.

Sew buttons to correspond to buttonholes.

HAT

With set of 4 double-pointed needles, cast on **85 (90)** sts. Divide sts onto 3 needles. Join in rnd. PM for beg of rnd.

1st rnd: Purl.

2nd rnd: Knit.

Rep last 2 rnds 4 times more, inc 5 sts evenly across last rnd.

90 (95) sts.

Knit in rnds until work from beg measures **4 (4½)" [10 (11.5) cm]**.

Shape top: 1st rnd: (RS). *K**16 (17)**. K2tog. Rep from * around. **85 (90)** sts.

2nd and alt rnds: Knit.

3rd rnd: *K**15 (16)**. K2tog. Rep from * around. **80 (85)** sts.

5th rnd: *K**14 (15)**. K2tog. Rep from * around. **75 (80)** sts.

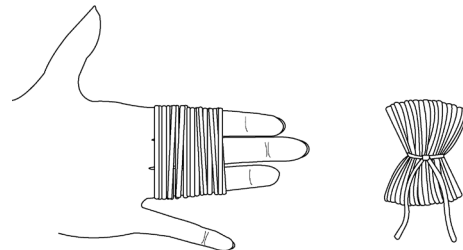
7th rnd: *K**13 (14)**. K2tog. Rep from * around. **70 (75)** sts.

Cont in this manner, dec 5 sts as established on every following alt rnd until 10 sts rem.

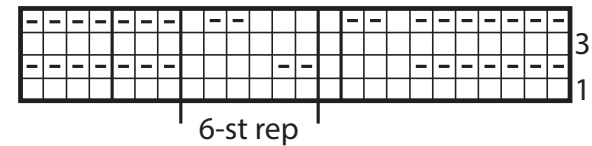
Break yarn, leaving a long end. Draw end tightly through rem sts. Pull tightly. Fasten securely.

Pompom

Wind yarn around 3 fingers approx 60 times. Remove from fingers and tie tightly in center. Cut through each side of loops. Trim to a smooth round shape. Sew to end of Hat.



CHART



Key

- Knit on RS rows. Purl on WS rows.
- Purl on RS rows. Knit on WS rows.

