



KNIT | SKILL LEVEL: **INTERMEDIATE**

ABBREVIATIONS

Alt = Alternate(ing)

Approx = Approximate(ly)

Beg = Begin(ning)

Cont = Continue(ity)

K = Knit

K2tog = Knit next 2 stitches together

M1 = Make 1 stitch by picking up horizontal loop lying before next stitch and knitting into back of loop



P = Purl

Pat = Pattern

PM = Place marker

Rem = Remain(der)(ing)(s)

Rep = Repeat

Rnd(s) = Round(s)

RS = Right side

SM = Slip marker

St(s) = Stitch(es)

WS = Wrong side

MATERIALS

Bernat® Softee® Baby™ (5 oz/140 g; 362 yds/331 m)

Sizes **6 12 18 24 mos**

Contrast A Aqua (30201) **1 1 1 2 ball(s)**

Contrast B Soft Fern (30221) **1 1 1 1 ball**

Contrast C Antique White (30008) **1 1 1 1 ball**

Contrast D Version A (Apple): Soft Red (30424) **1 1 1 1 ball**

or

Version B (Watermelon): Petunia (54001) **1 1 1 1 ball**

or

Version C (Avocado): Little Mouse (30010)

Sizes U.S. 5 (3.75 mm) and U.S. 6 (4 mm) circular knitting needles 24" [61 cm] long. Sets of 4 sizes U.S. 5 (3.75 mm) and U.S. 6 (4 mm) double-pointed knitting needles **or size needed to obtain gauge**. 4 stitch markers. **7 (9-9-10)** buttons.

SIZES

To fit chest measurement

6 mos **17" [43 cm]**

12 mos **18" [45.5 cm]**

18 mos **19" [48.5 cm]**

24 mos **20" [51 cm]**

Finished chest

6 mos **21½" [54.5 cm]**

12 mos **23" [58.5 cm]**

18 mos **25½" [65 cm]**

24 mos **26½" [67.5 cm]**

GAUGE

22 sts and 30 rows = 4" [10 cm] in stocking st on larger needles.

INSTRUCTIONS

The instructions are written for smallest size. If changes are necessary for larger sizes the instructions will be written thus (). Numbers for each size are shown in the same color throughout the pattern. When only one number is given in black, it applies to all sizes.

Note: Garment is worked from neck edge down. When yoke is complete, body is joined in one edge and worked in rows. Sleeves are worked in rnds on double-pointed needles.

When working from charts, carry color not in use loosely across WS of work. The colors are never twisted around one another.

With smaller circular needle and A, cast on **82 (86-90-94)** sts. **Do not** join. Working back and forth across needle in rows, proceed as follows:

1st row: (RS). *K2. P2. Rep from * to last 2 sts. K2.

2nd row: *P2. K2. Rep from * to last 2 sts. P2.

Rep these 2 rows for 1" [2.5 cm], ending on a WS row.

Change to larger circular needle and proceed as follows:

Next row: (RS). Knit.

Next row: Purl.

Break A. Join C. Beg shaping yoke:

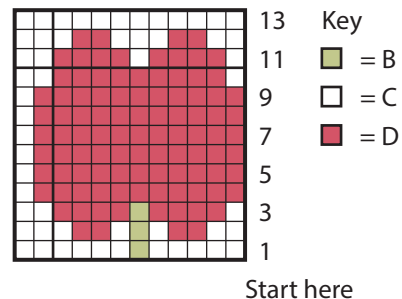
1st row: K3. *M1. K4. Rep from * to last 3 sts. M1. K3. **102 (107-112-117)** sts.

2nd and alt rows: Purl.

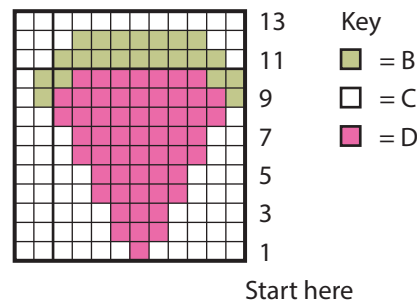
3rd row: K6. *M1. K5. Rep from * to last 6 sts. M1. K6. **121 (127-133-139)** sts.

Chart

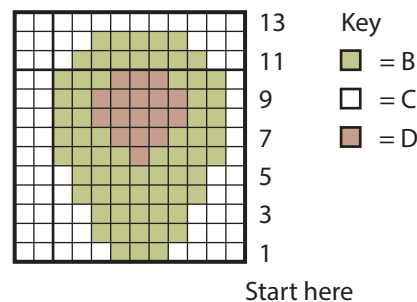
Version A



Version B



Version C



1st row: (RS) K1 (**4-1-4**). Work 1st row of Chart of choice, reading row from **right** to left, noting 12-st rep will be worked **10 (10-11-11)** times. K0 (**3-0-3**).

2nd row: P0 (**3-0-3**). Work 2nd row of Chart, reading row from **left** to right, noting 12-st rep will be worked **10 (10-11-11)** times. P1 (**4-1-4**).

Chart is now in position. Work Chart to end of Chart in stocking st.

Next row: Purl.

Stripe Pat (worked in stocking st).

With A, work 4 rows.

With B, work 2 rows.

These 6 rows form Stripe Pat.

Divide for Raglan Shaping and beg Stripe Pat:

1st row: K20 (**21-21-24**). M1. K1. PM. K1. M1. K19 (**20-21-20**). M1. K1. PM. K1. M1. K35 (**37-41-43**). M1. K1. PM. K1. M1. K19 (**20-21-20**). M1. K1. PM. K1. M1 K20 (**21-21-24**). **129 (135-141-147)** sts.

2nd row: Purl.

3rd row: *Knit to 1 st before marker. M1. K1. SM. K1. M1. Rep from * 3 times more. Knit to end of row. **137 (143-149-155)** sts.

Keeping cont of Stripe Pat, rep 2nd and 3rd rows **6 (7-8-9)** times more. **185 (199-213-227)** sts.

Work **1 (3-5-7)** row(s) even in stocking st.

Divide for Body and Sleeves:

1st row: (RS). K29 (**31-34-36**) for Right Front. Slip next **37 (40-41-44)** sts onto length of yarn for Right Sleeve. Cast on 4 sts. K53 (**57-63-67**) for Back. Slip next **37 (40-41-44)** sts onto length of yarn for Left Sleeve. Cast on 4 sts. K29 (**31-34-36**) for Left Front. **119 (127-139-147)** Body sts.

Cont working Body in Stripe Pat until Body from joining row measures 5 (**6-7-8**)" [**12.5 (15-18-20.5)** cm], ending on a purl row, dec 1 st at center of last row. **118 (126-138-146)** sts.

With smaller circular needle and A, proceed as follows:

1st row: (RS). *K2. P2. Rep from * to last 2 sts. K2.

2nd row: *P2. K2. Rep from * to last 2 sts. P2.

Rep these 2 rows until ribbing measures 1" [2.5 cm], ending on a WS row.

Cast off in ribbing.

Sleeves: With set of 4 larger double-pointed needles, using appropriate color to cont in Stripe Pat, beg at center of underarm cast on sts, pick up and knit 2 sts. **K37 (40-41-44)** Sleeve sts. Pick up and knit 2 sts across rem of underarm cast on edge. **41 (44-45-48)** sts. Join in rnd, PM on first st. Knit in rnds of Stripe Pat until Sleeve measures **5½ (6-6½-7)"** [**14 (15-16.5-18)** cm].

Sizes 6 and 18 mos only: Next rnd: Knit, dec 1 st at center of rnd. **40 (44)** sts.

All sizes: Change to set of 4 smaller double-pointed needles and A.

Next rnd: *K2. P2. Rep from * around.

Rep last rnd until ribbing measures 1" [2.5 cm]. Cast off in ribbing.

Buttonhole band: With RS facing, A, and smaller circular needle, pick up and knit **58 (66-74-82)** sts up Right Front edge, beg at lower edge.

1st row: (WS). *P2. K2. Rep from * to last 2 sts. P2.

2nd row: *K2. P2. Rep from * to last 2 sts. K2.

3rd row: As 1st row.

4th and 5th rows: Rep last 2 rows once more.

6th row (buttonholes): (RS). K2. P2. Cast off 2 sts. *Rib across 6 sts. Cast off 2 sts. Rep from * to last 4 sts. P2. K2.

7th row: P2. K2. *Cast on 2 sts. Rib across 6 sts. Rep from * to last 4 sts. Cast on 2 sts. K2. P2.

8th and 9th rows: As 2nd and 3rd rows.

10th row: As 1st row. Cast off in ribbing.

Button band: With RS, A, and smaller circular needle, pick up and knit **58 (66-74-82)** sts down Left Front, beg at neck edge.

1st row: (WS). *P2. K2. Rep from * to last 2 sts. P2.

2nd row: *K2. P2. Rep from * to last 2 sts. K2.

3rd to 10th rows: Rep last 2 rows 4 times more.

Cast off in ribbing.

Sew on buttons to correspond to buttonholes.

