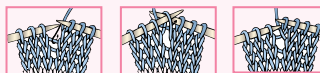




ABBREVIATIONS

www.bernat.com/abbreviations

- Approx** = Approximately
- Beg** = Beginning
- Cont** = Continue(ity)
- Inc** = Increase 1 stitch by knitting into front and back of next stitch
- K** = Knit
- K2tog** = Knit next 2 stitches together
- M1** = Make 1 stitch by picking up horizontal loop lying before next stitch and knitting into back of loop
- P** = Purl
- Pat** = Pattern
- Rem** = Remain(ing)
- Rep** = Repeat
- RS** = Right side
- Rnd(s)** = Round(s)
- St(s)** = Stitch(es)
- Ssk** = Slip next 2 stitches knitwise one at a time. Pass them back onto left-hand needle, then knit through back loops together
- WS** = Wrong side
- Yo** = Yarn over



INSTRUCTIONS

The instructions are written for smallest size. If changes are necessary for larger sizes the instructions will be written thus (). Numbers for each size are shown in the same color throughout the pattern. When only one number is given in black, it applies to all sizes.

Note: Cardigan is worked in one piece beg at neck edge. When yoke shaping is complete, sleeves are worked in rnds on set of four double-pointed needles.

With larger circular needle, cast on **38 (38-38-44)** sts. **Do not** join. Working back and forth across needle in rows, proceed as follows:
Foundation row: (WS). P3. Place marker. P4 (4-4-6). Place marker. P24 (24-24-26). Place marker. P4 (4-4-6). Place marker. P3.
1st row: (RS). K1. M1. K1. yo. K1. Slip marker. K1. yo. *Knit to 1 st before next marker. yo. K1. Slip marker. K1. yo. Rep from * twice more. K1. M1. K1. 10 sts increased.
2nd row: Purl.
3rd row: K1. M1. (Knit to 1 st before next marker. yo. K1. Slip marker. K1. yo) 4 times. Knit to last st. M1. K1. 10 sts increased.
4th row: Purl.
 Rep last 2 rows **4 (4-4-5)** times more. **98 (98-98-114)** sts. Neck shaping is now complete.

SIZES

To fit chest measurement

- 6 mos** 17" [43 cm]
- 12 mos** 18" [45.5 cm]
- 18 mos** 19" [48 cm]
- 24 mos** 20" [51 cm]

Finished chest

- 6 mos** 19" [48 cm]
- 12 mos** 20" [51 cm]
- 18 mos** 21½" [54.5 cm]
- 24 mos** 23½" [59.5 cm]

Bernat® Baby Coordinates™ (Ombres: 120 g/4.25 oz; 358 m/392 yds)

Sizes **6 12 18 24 mos**



Pink Parade (49303) **1 1 2 2 ball(s)**

Sizes 3.5 mm (U.S. 4) and 4 mm (U.S. 6) circular knitting needles 24" [60 cm] long. Sets of four sizes 3.5 mm (U.S. 4) and 4 mm (U.S. 6) double-pointed needles **or size needed to obtain gauge.** 4 stitch markers. 3 buttons. 2 stitch holders.

GAUGE

22 sts and 30 rows = 4" [10 cm] in stocking st with larger needles.



1st row: (RS). (Knit to 1 st before next marker. yo. K1. Slip marker. K1. yo) 4 times. Knit to end of row. 8 sts increased.

2nd row: Purl.

Rep last 2 rows **6 (7-8-9)** times more. **154 (162-170-194)** sts. Raglan shaping is now complete.

Dividing row: (RS). **K22 (23-24-27)** (Left Front). Place next **30 (32-34-40)** Sleeve sts on a st holder. Cast on **6 (6-8-8)** sts. **K50 (52-54-60)** (Back). Place next **30 (32-34-40)** Sleeve sts on a st holder. Cast on **6 (6-8-8)** sts. **K22 (23-24-27)** (Right Front). **106 (110-118-130)** sts for Body.

Beg with a purl row, work **6 (6-8-8)** rows in stocking st.

****Next row:** (WS). Knit.

Next 2 rows: Knit.

Next row: (RS). K1. *yo. K2tog. Rep from * to last st. K1.

Next 2 rows: Knit.**

Sizes 6 mos, 12 mos and 24 mos only: Next row: (WS). [K5 (6-4). M1] **21 (17-31)** times. K1 (8-6). **127 (127-161)** sts. Place marker at each end of last row.

Size 18 mos only: Next row: (WS). (K4. M1. K5. M1) 13 times. K1. **144** sts. Place marker at each end of last row.

All sizes: Proceed in Lace Pat as follows:

(See Chart on page 3).

1st row: (RS). P3. K2tog. yo. P2. *(K2tog) twice. (yo. K1) 3 times. yo. (ssk) twice. P2. K2tog. yo. P2. Rep from * to last st. P1.

2nd row: K3. P2. K2. *P11. K2. P2. K2. Rep from * to last st. K1.

3rd row: P3. yo. ssk. P2. *K11. P2. yo. ssk. P2. Rep from * to last st. P1.

4th row: K3. P2. K2. *K13. P2. K2. Rep from * to last st. K1.

These 4 rows form Lace Pat.

Cont in Lace Pat until work from marked row measures approx **5½ (6-7½-8½)" [14 (15-19-21.5) cm]**, ending on a 2nd row of Lace Pat.

Next row: Knit, inc **1 (1-0-1)** st in center of row. **128 (128-144-162)** sts.

Work from ** to ** as given above.

Cast off knitwise (WS).

Sleeves: With set of 4 larger double-pointed needles, beg at center of underarm cast on sts, pick up and knit **3 (3-4-4)** sts. **K30 (32-34-40)** Sleeve sts. Pick up and knit **3 (3-4-4)** sts across rem of underarm cast on edge. **36 (38-42-48)** sts. Join in rnd, placing a marker on first st. Knit in rnds until Sleeve measures **4 (5-5½-6)" [10 (12.5-14-15) cm]**.

Change to set of 4 smaller double-pointed needles.

Next rnd: Purl.

Next rnd: Knit.

Next rnd: Purl.

Next rnd: K1. *yo. K2tog. Rep from * to last st. K1.

Next rnd: Purl.

Next rnd: Knit.

Cast off purlwise.

Edging: With RS facing and smaller circular needle, beg at cast off edge, pick up and knit **47 (50-54-60)** sts up Right Front edge to end of neck shaping, **10 (11-11-13)** sts up neck edge, **36 (36-36-42)** sts across cast on edge, **10 (11-11-13)** sts down neck edge and **47 (50-54-60)** sts down Left Front edge. **150 (158-166-188)** sts. **Do not** join. Working back and forth across needle in rows, proceed as follows:

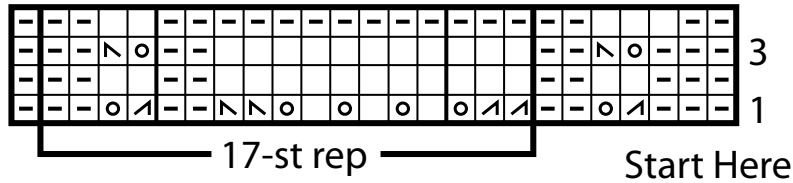
1st and 2nd rows: Knit.

3rd row: (WS). Knit to last **48 (50-54-60)** sts. *Cast off 2 sts. **K5 (5-6-6)** (including st on needle after cast off). Rep from * once more. Cast off 2 sts. Knit to end of row. 3 buttonholes made.

4th row: Knit, casting on 2 sts over cast off sts.

Cast off knitwise (WS). Sew on buttons to correspond to buttonholes.

CHART



KEY

- = Knit on RS rows. Purl on WS rows.
- = Purl on RS rows. Knit on WS rows.
- = ssk
- = K2tog
- = yo

