



KNIT | SKILL LEVEL: **BEGINNER**

## ABBREVIATIONS

**Beg** = Beginning  
**K** = Knit  
**K2tog** = Knit next 2 stitches together  
**PM** = Place marker

**Rem** = Remain(ing)(s)  
**Rep** = Repeat  
**RS** = Right side  
**St(s)** = Stitch(es)  
**WS** = Wrong side

## SIZES

To fit baby **6/12** (**18/24**) mos.

## GAUGE

20 sts and 40 rows = 4" [10 cm] in garter st.

## INSTRUCTIONS

*The instructions are written for smaller size. If changes are necessary for larger size the instructions will be written **6/12** (**18/24**) mos. Numbers for each size are shown in the same color throughout the pattern. When only one number is given in black, it applies to both sizes.*

Beginning (beg) at front opening, cast on **94** (**102**) stitches (sts).  
**1st row:** [Right side (RS)]. Cast off 30 sts – this creates first front tie. Knit to end of row. **66** (**74**) sts.

**2nd row:** Cast on 30 sts. Cast off 30 sts just cast on – this creates second front tie. Knit to end of row. **64** (**72**) sts.

Knit even in garter stitch (knit every row) until work from beg measures **6** (**6¾**)" [**15** (**17**) cm], ending on a wrong side (WS) row. Place marker (PM) at end of row.

## Shape back of Bonnet

**1st row:** (RS). Knit (K)1. [Knit next 2 stitches together (K2tog). K2] **15** (**17**) times. K2tog. K1. **48** (**54**) sts.  
**2nd to 4th rows:** Knit.  
**5th row:** (RS). K1. (K2tog. K1) **15** (**17**) times. K2tog. **32** (**36**) sts.  
**6th to 10th rows:** Knit.  
**11th row:** \*K2tog. Rep from \* to end of row. **16** (**18**) sts.  
**12th row:** Knit. Cast off knitwise.

## MATERIALS

Sizes	6/12	18/24	mos
<b>Bernat® Softee® Cotton™</b> (4.2 oz/120 g; 254 yds/232 m)			
Sandstone (69009)	<b>1</b>	<b>1</b>	<b>ball</b>
	<b>85/78</b>	<b>93/85</b>	<b>yds/m</b>

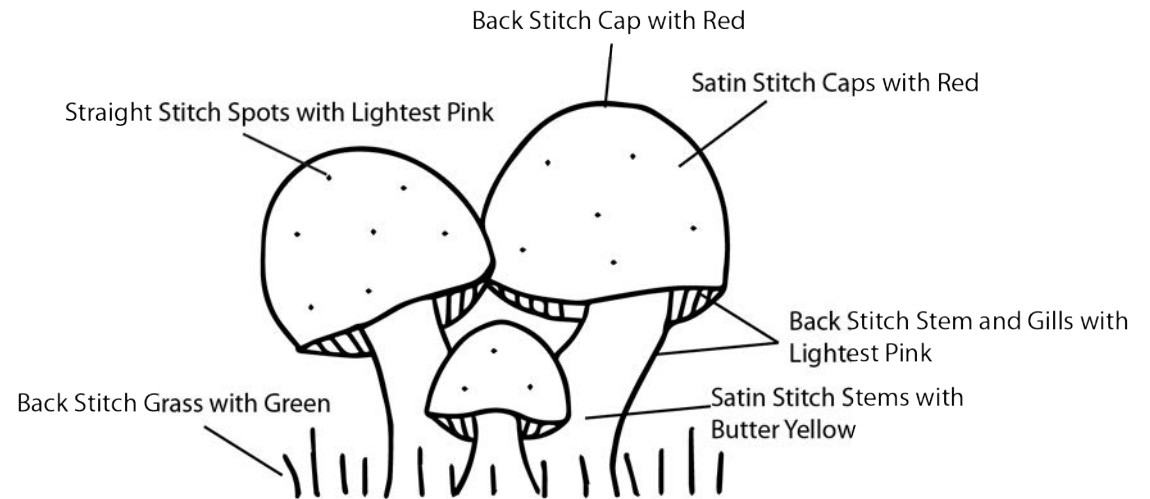
**Coats & Clark® 6-Strand Embroidery Floss Value Pack** - Macaroons  
 1 skein Red  
 1 skein Lightest Pink  
 1 skein Butter Yellow  
 1 skein Green

Size U.S. G/6 [4 mm] Susan Bates® knitting needles **or size needed to obtain gauge.** Susan Bates® yarn needle. Susan Bates® locking stitch marker. Embroidery needle. Sticky-back water soluble fabric stabilizer to transfer embroidery motif.

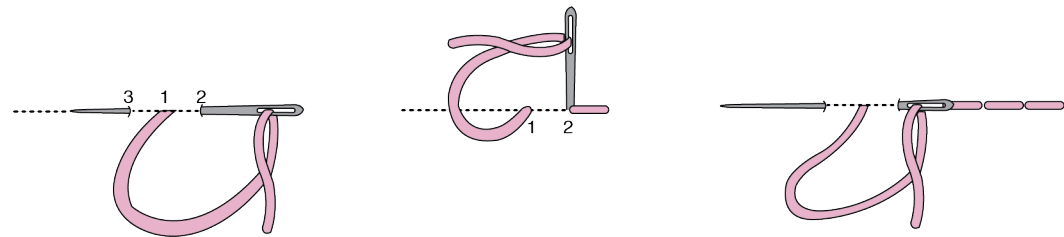
Break yarn leaving a long end. Draw through remaining (rem) sts and fasten securely. Sew back seam to marked row.

Using a sticky-back water soluble stabilizer, draw embroidery design on stabilizer, attach onto Bonnet and embroider. Dissolve stabilizer following manufacturer's instructions.

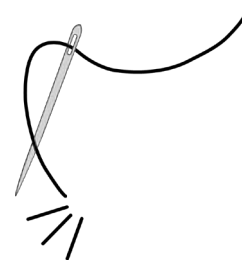
### ASSEMBLY DIAGRAM



### BACK STITCH



### STRAIGHT STITCH



### SATIN STITCH

