



KNIT | SKILL LEVEL: **EASY**

ABBREVIATIONS

Approx = Approximately

Beg = Begin(ning)

Cont = Continue(ity)

Dec = Decrease(ing)

Inc = Increase(ing)

K = Knit

P = Purl

Pat = Pattern

PM = Place marker

Rep = Repeat

RS = Right side

St(s) = Stitch(es)

WS = Wrong side

MEASUREMENTS

Approx 15" [38 cm] wide x 24" [61 cm] deep, excluding hood.

GAUGE

12 sts and 16 rows = 4" [10 cm] in garter st.

INSTRUCTIONS

Beg at Hood, cast on 43 sts.

Knit 3 rows, noting 1st row is WS and inc 3 sts evenly across last row. 46 sts.

Proceed in pat (4-st rep) as follows (see chart on page 2):

1st row: (RS). K5. (P2. K2) 9 times. K5.

2nd row: As 1st row.

3rd row: K5. P1. (K2. P2) 8 times. K2. P1. K5.

4th row: K6. (P2. K2) 8 times. P2. K6.

5th row: K5. (K2. P2) 9 times. K5.

6th row: As 5th row.

7th row: As 4th row.

8th row: As 3rd row.

9th and 10th rows: As 1st row.

11th row: As 4th row.

12th row: As 3rd row.

13th and 14th rows: As 5th row.

15th row: As 3rd row.

16th row: As 4th row.

These 16 rows form Pat and 5-st garter edges.

Cont in pat until work from beg measures 8" [20.5 cm], ending on a WS row. PM as first set at each end of last row.

MATERIALS

Bernat® Baby Marly™ (10.5 oz/300 g; 221 yds/202 m)
Snow Violets (33008) **2 balls**

Size U.S. 11 (8 mm) knitting needles **or size needed to obtain gauge.**
Stitch markers. 10 buttons 1" [2.5 cm] diameter.

BERNAT® KNIT BUNTING BAG

Cont in pat until work from first set of markers measures 24" [61 cm] ending on a WS row. PM as second set at each end of last row.

PM for buttonholes on both sides of 5-st garter edges, having top set of buttonhole markers 2" [5 cm] down from last row. Bottom set of buttonhole markers 1" [2.5 cm] down from first set of side markers and rem 3 buttonholes spaced evenly between.

Buttonhole rows: 1st row: (RS). K2. Cast off 2 sts. Pat to last 4 sts. Cast off 2 sts. K2 (including st on needle after cast off).

2nd row: Work in pat, casting on 2 sts over cast off sts.

Cont in pat, working buttonhole rows to correspond to markers, until work from second set of markers measures 24" [61 cm], ending on a WS row and dec 3 sts evenly across last row. 43 sts.

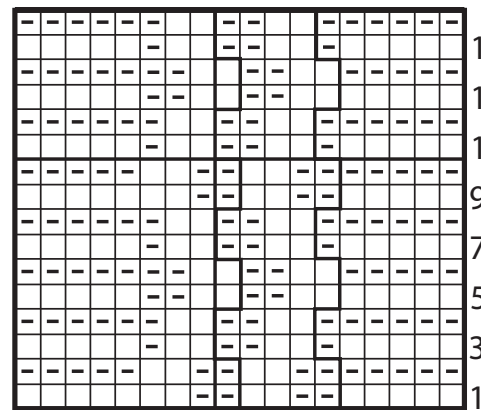
Knit 4 rows (garter st).

Cast off knitwise (WS).

FINISHING

Pin garment pieces to measurements. Cover with damp cloth, leaving cloth to dry.

Fold work along second set of markers for Front. Sew buttons to correspond to buttonholes on WS of Back. Fold 2 corners before first set of markers to form hood (see diagram). Sew hood center seam.



Start Here
4-st rep

Key

- = Knit on RS rows. Purl on WS rows.
- ▣ = Purl on RS rows. Knit on WS rows.

