



LIGHT
 **3**  **KNIT 1 SKILL LEVEL: INTERMEDIATE**

ABBREVIATIONS

Approx = Approximately
Alt = Alternate
Beg = Beginning
C6F = Slip next 3 stitches onto cable needle and leave at front of work. K3, then K3 from cable needle
K = Knit.
K2tog = Knit 2 stitches together.
M1 = Make one stitch by picking up horizontal loop lying before next stitch and knitting into back of loop.

P2tog = Purl next 2 stitches together
P = Purl
Pat = Pattern
Pss = Pass slipped stitch over.
Rep = Repeat.
RS = Right side.
Sl1 = Slip next stitch knitwise.
Ssk = Slip next 2 stitches knitwise one at a time. Pass them back onto left-hand needle, then knit through back loops together.
St(s) = Stich(es)
WS = Wrong side
Yo = Yarn over



MATERIALS

Version 1

Bernat® Softee Baby® (5 oz/140 g; 362 yds/331 m)
 Soft Peach (30410) **3 balls or 1000 yds/910 m**

Version 2

Bernat® Softee Baby Cotton® (4.2 oz/120 g; 254 yds/232 m)
 Feather Gray (52003) **4 balls or 1000 yds/910 m**

Size U.S. 6 (4 mm) Susan Bates® Silvalume® circular knitting needle 36" [91.5 cm] long **or size needed to obtain gauge.** Susan Bates® cable needle. Susan Bates® yarn needle.

MEASUREMENT

Approx 36" [91.5 cm] square.

GAUGE

22 sts and 30 rows = 4" [10 cm] in stocking stitch.

INSTRUCTIONS

Cast on 164 sts. **Do not** join. Working back and forth across needle in rows, proceed as follows: Knit 6 rows (garter st), noting first row is WS.

Next row: (WS). (K13. M1. K14. M1) 5 times. K14. M1. K15. 175 sts (multiple of 27 sts + 13 for Lace Pat).

Proceed in Lace Pat as follows:
See Chart on page 2.

1st row: (RS). K5. P1. *K2. K2tog. yo. P2. P2tog. yo. K3. C6F. K3. yo. P2tog. P2. yo. ssk. K1. Rep from * 5 times more. K1. P1. K5.

2nd and alt rows: K6. Knit all knit sts and purl all purl sts as they appear. Purl all yo sts to last 6 sts. K6.

3rd row: K5. P1. *K1. K2tog. yo. P2. P2tog. yo. K3. P1. K6. P1. K3. yo. P2tog. P2. yo. ssk. Rep from * 5 times more. K1. P1. K5.

5th row: K5. P1. K2tog. *yo. P2. P2tog. yo. K3. P2. C6F. P2. K3. yo. P2tog. P2. yo.** Sl1. K2tog. pssso. Rep from * 4 times more, then rep from * to ** once. ssk. P1. K5.

7th row: K5. P1. *K2. yo. P2tog. P2. yo. K2. ssk. P2. K4. P2. K2tog. K2. yo. P2. P2tog. yo. K1. Rep from * 5 times more. K1. P1. K5.

9th row: K5. P1. *K3. yo. P2tog. P2. yo. K2. ssk. P2. K2. P2. K2tog. K2. yo. P2. P2tog. yo. K2. Rep from * 5 times more. K1. P1. K5.

11th row: K5. P1. *K4. yo. P2tog. P2. yo. K2. ssk. P4. K2tog. K2. yo. P2. P2tog. yo. K3. Rep from * 5 times more. K1. P1. K5.

13th row: K5. P1. *K5. yo. P2tog. P2. yo. K2. ssk. P2. K2tog. K2. yo. P2. P2tog. yo. K4. Rep from * 5 times more. K1. P1. K5.

15th row: K5. P1. *K3. K2tog. yo. P2. P2tog. yo. K1. yo. K2. ssk. K2tog. K2. yo. K1. yo. P2tog. P2. yo. ssk. K2. Rep from * 5 times more. K1. P1. K5.

16th row: As 2nd row.

Rep last 16 rows for pat until work from beg measures approx 35" [89 cm] ending on a 16th row of pat.

Next row: (RS). (K13. K2tog. K12. K2tog) 5 times. K13. K2tog. K15. 164 sts.

Knit 6 rows (garter st).

Cast off knitwise (WS).



Version 1



Version 2

Key

☐ = Knit on RS rows. Purl on WS rows

☐ = Purl on RS rows. Knit on WS rows.

☐ = C6F

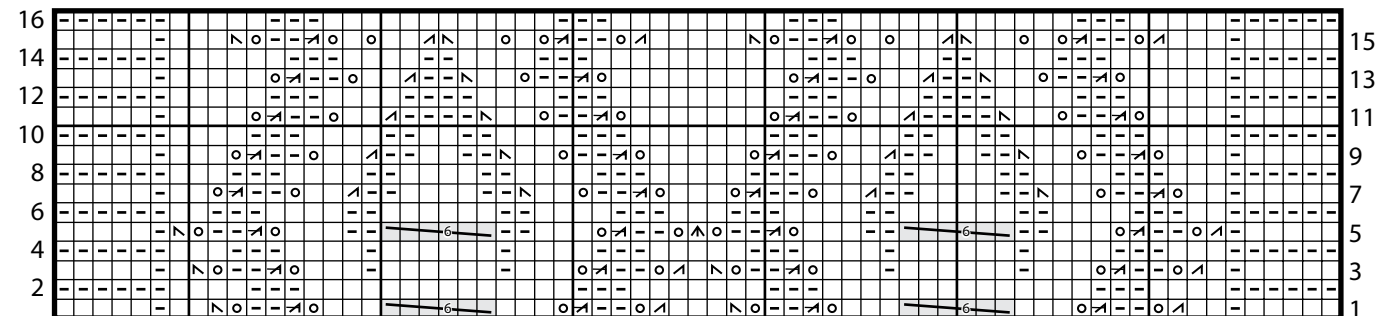
○ = yo

☐ = K2tog

☐ = ssk

☐ = P2tog

☐ = Sl1. K2tog. pssso



Start Here