

BERNAT® PARTY HEART-Y MOSAIC KNIT BABY BLANKET



KNIT | SKILL LEVEL: **INTERMEDIATE**

ABBREVIATIONS

Alt = Alternate(ing)

Approx = Approximately

Beg = Begin(ning)

Continue = Continue

K = Knit

Kfb = Increase 1 stitch by knitting into front and back of next stitch

K2tog = Knit next 2 stitches together

Pat = Pattern

Rep = Repeat

RS = Right side

Sl1Pwyib = Slip next stitch purlwise with yarn at back of work.

Sl1Pwyif = Slip next stitch purlwise with yarn at front of work.

St(s) = Stitch(es)

WS = Wrong side

MEASUREMENTS

Approx 35½" x 39" [90 x 99 cm].

GAUGES

15 sts and 45 rows = 4" [10 cm] in garter st with Bernat Baby Velvet.

17.5 sts and 35 rows = 4" [10 cm] in Mosaic Heart Pat.

INSTRUCTIONS

BLANKET

Notes:

- Mosaic Heart Pat worked over multiple of 16 sts + 25.
- Carry color when not in use loosely up side of work.

With MC, cast on 134 sts. **Do not** join. Working back and forth across needle proceed as follows:

1st to 5th rows: Knit.

6th row: (WS). K3. Kfb. (K6. Kfb) 18 times. K4. 153 sts.

See chart on page 2.

Proceed in Mosaic Heart Pat as follows:

****1st row:** (RS). With A, K5. *(Sl1Pwyib) twice. K4. Sl1Pwyib. K1. Sl1Pwyib. K4. (Sl1Pwyib) twice. K1. Rep from * to last 4 sts. K4.

2nd and alt rows: With same color as row just worked, knit all knit sts and Sl1Pwyif all slipped sts from previous row.

MATERIALS

Bernat® Baby Velvet™ (10.5 oz/300 g; 492 yds/450 m)

Main Color (MC) Snowy White (86060) **1 ball**

Bernat® Baby Crushed Velvet™ (10.5 oz/300 g; 492 yds/450 m)

Contrast A Indigo Shadow (13013) **1 ball**

Size U.S. 7 (4.5 mm) circular knitting needle 36" [91.5 cm] long **or size needed to obtain gauge.**

BERNAT® PARTY HEART-Y MOSAIC KNIT BABY BLANKET

3rd row: With MC, K5. *K2. Sl1Pwyib. K1. (Sl1Pwyib) twice. K3. (Sl1Pwyib) twice. K1. Sl1Pwyib. K3. Rep from * to last 4 sts. K4.

5th row: With A, K5. *(Sl1Pwyib. K6) twice. Sl1Pwyib. K1. Rep from * to last 4 sts. K4.

7th row: With MC, K5. *K1. (Sl1Pwyib) twice. (K1. Sl1Pwyib) 5 times. Sl1Pwyib. K2. Rep from * to last 4 sts. K4.

9th row: With A, K5. *Sl1Pwyib. K13. Sl1Pwyib. K1. Rep from * to last 4 sts. K4.

11th row: With MC, K5. *K2. (Sl1Pwyib. K1) 6 times. K2. Rep from * to last 4 sts. K4.

13th row: With A, K5. *(Sl1Pwyib) twice. K11. (Sl1Pwyib) twice. K1. Rep from * to last 4 sts. K4.

15th row: With MC, K5. *K4. (Sl1Pwyib. K1) 4 times. K3. Sl1Pwyib. Rep from * to last 20 sts. K4. (Sl1Pwyib. K1) 4 times. K8.

17th row: With A, K5. *(K1. Sl1Pwyib) twice. K7. (Sl1Pwyib. K1) twice. K1. Rep from * to last 4 sts. K4.

19th row: With MC, K5. *Sl1Pwyib. K5. Sl1Pwyib. K1. Rep from * to last 4 sts. K4.

21st row: With A, K5. *(K3. Sl1Pwyib. K1. Sl1Pwyib) twice. K4. Rep from * to last 4 sts. K4.

23rd row: With MC, K5. *Sl1Pwyib. K1. Sl1Pwyib. (K4. Sl1Pwyib) twice. K1. Sl1Pwyib. K1. Rep from * to last 4 sts. K4.

25th row: With A, K5. *K5. (Sl1Pwyib) twice. K1. (Sl1Pwyib) twice. K6. Rep from * to last 4 sts. K4.

27th row: With MC, K5. *(Sl1Pwyib. K1) 3 times. K4. (Sl1Pwyib. K1) 3 times. Rep from * to last 4 sts. K4.

29th row: With A, K5. *K6. (Sl1Pwyib. K1) twice. K6. Rep from * to last 4 sts. K4.

31st row: With MC, K5. *(Sl1Pwyib. K1) twice. (Sl1Pwyib) twice. K3. (Sl1Pwyib) twice. (K1. Sl1Pwyib) twice. K1. Rep from * to last 4 sts. K4.

33rd row: With A, K5. *K6. (Sl1Pwyib. K1) twice. K5. Sl1Pwyib. Rep from * to last 20 sts. K6. (Sl1Pwyib. K1) twice. K10.

35th row: With MC, K5. *K1. (Sl1Pwyib) twice. K1. Sl1Pwyib. K5. Sl1Pwyib. K1. (Sl1Pwyib) twice. K2. Rep from * to last 4 sts. K4.

37th row: With A, K5. *Sl1Pwyib. K4. [(Sl1Pwyib) twice. K1] twice. K3. Sl1Pwyib. K1. Rep from * to last 4 sts. K4.

39th row: With MC, knit.

41st row: With A, K5. *Sl1Pwyib. K1. Rep from * to last 4 sts. K4.

43rd row: With MC, knit.

44th row: (WS). Knit.

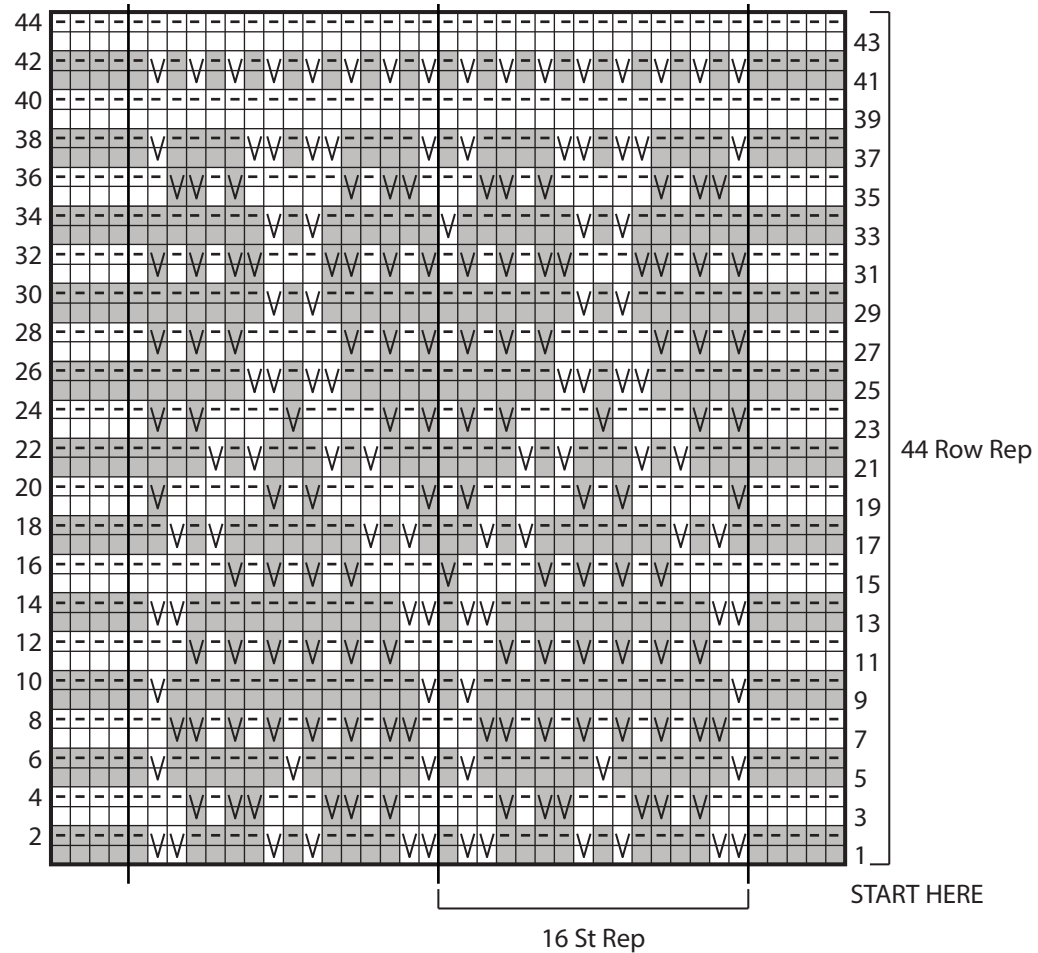
Last 44 rows form Mosaic Heart Pat.

Cont in Mosaic Heart Pat until work from beg measures approx 39" [99 cm], ending on a 38th row of pat.

Next row: (RS). With MC, K3. K2tog. (K6. K2tog) 18 times. K4. 134 sts.

Next 5 rows: Knit. Cast off.





KEY

- = With MC, knit on RS rows.
- = With A, knit on RS rows.
- ◻ = With MC, knit on WS rows.
- ◼ = With A, knit on WS rows.
- ◻ = With MC, knit on RS rows. = S1Pwyib on RS rows. S1Pwyif on WS rows.
- ◼ = With A, knit on RS rows. = S1Pwyib on RS rows. S1Pwyif on WS rows.