



 **KNIT | SKILL LEVEL: EASY**

## ABBREVIATIONS

**Approx** = Approximately

**Beg** = Begin(ning)

**Cont** = Continue(ity)

**K** = Knit

**Kfb** = Increase 1 stitch by knitting into front and back of next stitch

**K2tog** = Knit next 2 stitches together

**P2tog** = Purl next 2 stitches together

**P2togtbl** = Purl next 2 stitches together through back loops

**Rep** = Repeat

**RS** = Right side

**Ssk** = Slip next 2 stitches knitwise one at a time. Pass them back on to left-hand needle, then knit through back loops together

**St(s)** = Stitch(es)

**Tog** = Together

**WS** = Wrong side

## MEASUREMENTS

Approx 36" x 40" [91.5 x 101.5 cm].

## GAUGE

Bernat® Baby Blanket™: 8 sts and 13 rows = 4" [10 cm] in stocking st.

## INSTRUCTIONS

**Note:** When working from chart, wind small balls of the colors to be used, one for each separate area of color in the design. To change colors, wind the 2 colors around each where they meet, on WS, to avoid a hole.

With MC, cast on 64 sts. **Do not** join. Working back and forth across needle in rows, proceed as follows:

Knit 4 rows (garter st), noting that 1st row is WS.

**Set-up row:** K3. Kfb. (K7. Kfb) 7 times. K4. 72 sts.

## Work Blanket as follows:

**1st row:** (RS). Knit.

**2nd row:** K4. Purl to last 4 sts. K4. Rep these 2 rows until work from beg measures 14" [35.5 cm], ending on a WS row.

## MATERIALS

**Bernat® Baby Blanket™** (3.5 oz/100 g; 72 yds/65 m)

**Main Color (MC)** Baby Blue (03202) **5 balls or 350 yds/320 m**

**Contrast A** White (03005) **1 ball**

**Bernat® Softee® Chunky™** (3.5 oz/100 g; 108 yds/99 m)

**Contrast B** Black (28040) **1 ball**

Size U.S. 11 (8 mm) circular knitting needle 29" [73.5 cm] long **or size needed to obtain gauge.**

**Place Chart** (see page 3).

**1st row:** (RS). K28. Knit 1st row of Chart I across next 16 sts, reading row from right to left. Knit to end of row.

**2nd row:** K4. P24. Purl 2nd row of Chart I across next 16 sts, reading row from left to right. Purl to last 4 sts. K4.

Keeping cont of Chart I, as placed in last 2 rows, work even until Chart I is complete.

**Next row:** (RS). Knit

**Next row:** K4. Purl to last 4 sts. Rep these 2 rows until work from beg measures approx 38½" [98 cm], ending on a WS row.

**Next row:** (RS). K3. K2tog. (K7. K2tog) 7 times. K4. 64 sts. Knit 4 rows (garter st). Cast off knitwise (WS).

### FINISHING

Following Chart II and using B, work duplicate st to embroider Eyes, Nose, and Mouth.

**Outer Ears** (make 2).

With MC, cast on 24 sts. Work 12 rows in stocking st, noting first row is RS.

**Begin Shaping: 1st row:** K2. ssk. K2tog. Knit to last 6 sts. ssk. K2tog. K2. 20 sts.

**2nd row:** Purl. Rep these 2 rows 3 times more. 8 sts.

**Next row:** K2. ssk. K2tog. K2. 6 sts, Divide sts onto 2 needles. Graft 2 sets of 3 sts tog.

**Inner Ears** (make 2).

With A, cast on 12 sts. Work 8 rows in stocking st, noting first row is RS.

**Begin Shaping: 1st row:** K1. ssk. Knit to last 3 sts. K2tog. K1. 10 sts.

**2nd row:** P1. P2tog. Purl to last 3 sts. P2togtbl. K1. 8 sts. Rep these 2 rows once more. 4 sts.

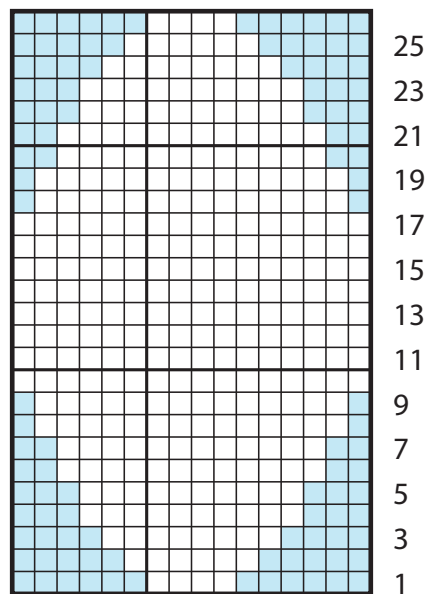
**Next row:** ssk. K2tog. Cast off knitwise.

With RS facing, sew Inner Ear to Outer Ear. Sew Ears to Blanket as shown in picture.





Chart I (Intarsia)

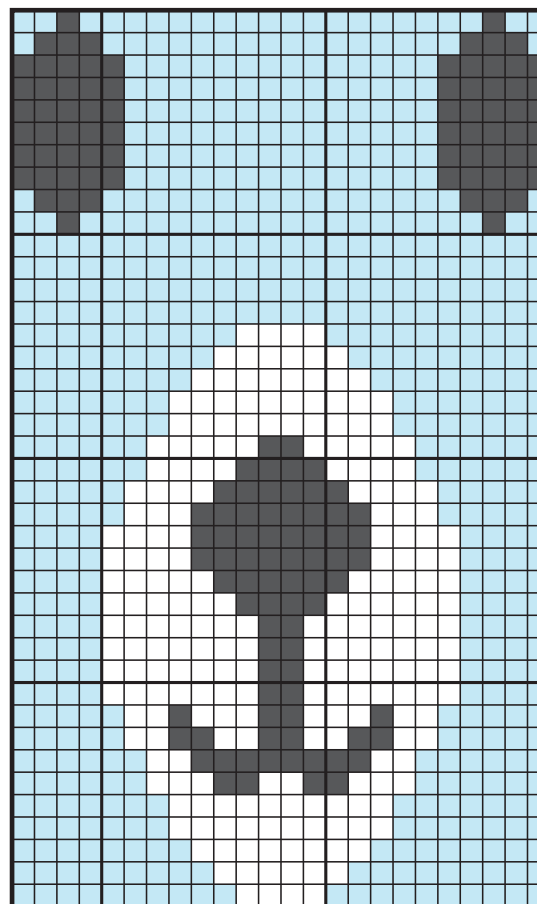


Start here

Key

- = MC
- = A

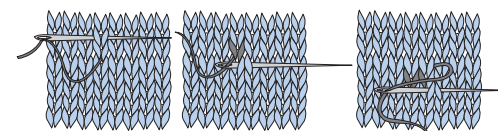
Chart II (Duplicate Stitch)



Start here

Key

- = MC
- = A
- = B (duplicate st)



**Duplicate St Diagrams**