



MATERIALS

Bernat® Baby Blanket Dappled™ (10.5 oz/300 g; 220 yds/201 m)
 Skipping Stone (15001) **2 balls or 410 yds/375 m**

Size U.S. 11 (8 mm) circular knitting needle 40" (101.5 cm) long **or size needed to obtain gauge.** Cable needle.



KNIT | SKILL LEVEL: **INTERMEDIATE**

ABBREVIATIONS

Alt = Alternate(ing)

Approx = Approximately

Beg = Beginning

Cont = Continu(e)(ity)

C8B = Slip next 4 stitches onto cable needle and leave at back of work. K4, then K4 from cable needle.

C8F = Slip next 4 stitches onto cable needle and leave at front of work. K4, then K4 from cable needle.

K = Knit

Kfb = Increase 1 stitch by knitting into front and back of next stitch

K2tog = Knit next 2 stitches together

Pat = Pattern

P = Purl

Rep = Repeat

RS = Right side

St(s) = Stitch(es)

WS = Wrong side

MEASUREMENTS

Approx 40" x 44" [101.5 x 112 cm].

GAUGE

8 sts and 13 rows = 4" [10 cm].

INSTRUCTIONS

Cable Panel Pat (worked over 16 sts).

1st row: Knit.

2nd and alt rows: Purl.

3rd row: C8B. C8F.

5th, 7th and 9th rows: Knit.

11th row: As 3rd row.

13th, 15th, and 17th rows: Knit.

19th row: C8F. C8B.

21st, 23rd, and 25th rows: Knit.

27th row: As 19th row.

29th and 31st rows: Knit.

32nd row: Purl.

Cast on 72 sts. **Do not** join. Working back and forth in rows, proceed as follows:
 Knit 4 rows (garter st), noting 1st row is WS.

Next row: K8. *Kfb. K7. Rep from * to end of row. 80 sts.

Proceed in Cable Pat:

1st row: K4. (P6. Work 1st row of Cable Chart) 3 times. P6. K4.

2nd row: K10. (Work 2nd row of Cable Chart. K6) 3 times. K4.

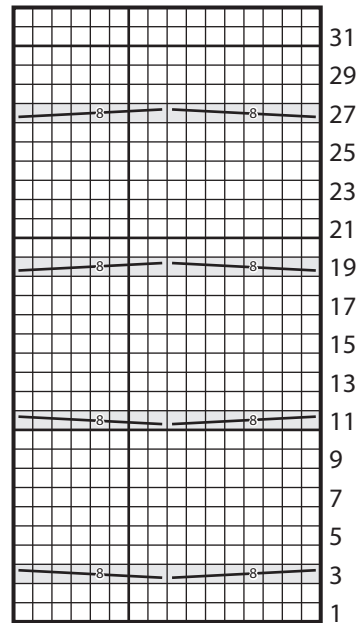
3rd row: K4. (P6. Work 3rd row of Cable Chart) 3 times. P6. K4.

4th row: K10. (Work 4th row of Cable Chart. K6) 3 times. K4. Cable Chart is now in position.

Keeping cont of Cable Chart, cont as established until work from beg measures approx 42" [106.5 cm], ending on a 31st row of Cable Chart.

Next row: (WS). K8. *K2tog. K7. Rep from * across. 72 sts. Knit 3 rows (garter st). Cast off knitwise (WS).

Cable Chart



Start Here

Key

□ = Knit on RS rows. Purl on WS rows.

= C8B

= C8F

