



KNIT | SKILL LEVEL: **INTERMEDIATE**

ABBREVIATIONS

Appox = Approximately
Alt = Alternate(ing)
Beg = Beginning
C4B = Slip next 2 sts onto cable needle and leave at back of work. K2, then K2 from cable needle.
C4F = Slip next 2 sts onto cable needle and leave at front of work. K2, then K2 from cable needle.
Cont = Continue(ity)
Dec = Decrease
Inc = Increase
K = Knit
K2tog = Knit next 2 stitches together

M1 = Make 1 stitch by picking up horizontal loop lying before next stitch and knitting into back of loop



P = Purl
Pat = Pattern
Rep = Repeat
RS = Right side
St(s) = Stitch(es)
WS = Wrong side

MEASUREMENT

Approx 36" [91.5 cm] square.

GAUGE

8 sts and 13 rows = 4" [10 cm] in stocking st.

INSTRUCTIONS

Cast on 72 sts.

1st row: (RS). *K1. P1. Rep from * to end of row.

2nd row: *P1. K1. Rep from * to end of row.

Rep last 2 rows of Seed St Pat once more.

Next row: (Inc row). (K1. P1) twice. *K4. M1. Rep from * to last 4 sts. (K1. P1) twice. 88 sts.

Next row: (P1. K1) twice. Purl to last 4 sts. (P1. K1) twice.

Proceed in pat as follows:
 See Diagram on page 2.

1st row: (RS). (K1. P1) twice. Knit to last 4 sts. (K1. P1) twice.

MATERIALS

Bernat® Baby Blanket™ (100 g/3.5 oz; 78 m/86 yds)
 Baby Blue (03202) **6 balls OR**

Bernat® Baby Blanket™ (300 g/10.5 oz; 234 m/258 yds)
 Baby Blue (04202) **2 balls**

Size 8 mm (U.S. 11) circular knitting needle 36" [90 cm] long **or size needed to obtain gauge.** Cable needle.

2nd and alt rows: (P1. K1) twice.
Purl to last 4 sts. (P1. K1) twice.

3rd row: (K1. P1) twice. *C4F. K4.
Rep from * to last 4 sts. (K1. P1) twice.

5th row: As 1st row.

7th row: (K1. P1) twice. *K4. C4B.
Rep from * to last 4 sts. (K1. P1) twice.

8th row: As 2nd row.
These 8 rows form Pat.

Cont in pat until work from beg measures 34" [86.5 cm], ending with a WS row.

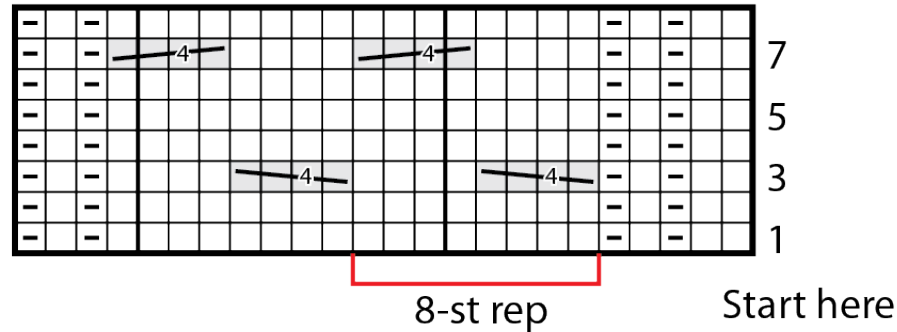
Next row: (Dec row). (K1. P1) twice.
*K2tog. K3. Rep from * to last 4 sts.
(K1. P1) twice. 72 sts.

Next row: (WS). *P1. K1. Rep from * to end of row.

Next row: *K1. P1. Rep from * to end of row.

Rep last 2 rows of Seed St Pat once more.

Cast off in pat.



Key

□ = Knit on RS rows. Purl on WS rows.

◻ = Purl on RS rows. Knit on WS rows.

☐ = C4B

☐ = C4F