



MATERIALS

Bernat® Baby Sport™ (12.3 oz/350 g; 1256 yds/1148 m)
Lilac (21319) **1 ball**

Size U.S. 7 (4.5 mm) circular knitting needle 32" [81.5 cm] long **or size needed to obtain gauge.**

ABBREVIATIONS:

Approx = Approximate(ly)
K = Knit
K2tog = Knit next 2 stitches together
Kfb = Increase 1 stitch by knitting into front and back of next stitch
Rep = Repeat

Ssk = Slip next 2 stitches knitwise one at a time. Pass them back onto left-hand needle, then knit through the back loops together.
St(s) = Stitch(es)
WS = Wrong side
Yo = Yarn over

 **KNIT** | SKILL LEVEL: **EASY**

MEASUREMENTS

Approx 36" by 40" [91.5 x 101.5 cm].

GAUGE

21 sts and 28 rows = 4" [10 cm] in stocking st.

INSTRUCTIONS

Cast on 170 sts. **Do not** join. Working back and forth across needle in rows, proceed as follows:
 Knit 8 rows (garter st), noting first row is WS.

Next row: (WS). K10. *Kfb. K15. Rep from * to end of row. 180 sts.

Proceed in Lace Pat as follows:

1st row: (RS). K10. *K1. yo. K2. ssk. K2tog. K2. yo. K1. Rep from * to last 10 sts. K10.

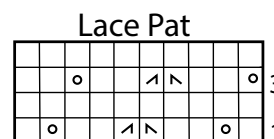
2nd row: K10. Purl to last 10 sts. K10.

3rd row: K10. *yo. K2. ssk. K2tog. K2. yo. K2. Rep from * to last 10 sts. K10.

4th row: As 2nd row.
 Rep last 4 rows for Lace Pat until work from beg measures approx 39" [99 cm], ending on a 4th row of pat.

Next row: (RS). K10. *K2tog. K15. Rep from * to end of row. 170 sts.

Knit 8 rows (garter st).
 Cast off knitways (WS).



Key
 □ = Knit on RS rows. Purl on WS rows
 o = yo
 ↗ = K2tog
 ↘ = ssk