



SIZES

To fit chest measurement
Extra-Small/Small 28-34ins [71-86.5 cm]
Medium 36-38 ins [91.5-96.5 cm]
Large 40-42 ins [101.5-106.5 cm]
Extra-Large 44-46 ins [112-117 cm]
2/3 Extra-Large 48-54 ins [122-137 cm]
4/5 Extra-Large 56-62 ins [142-157.5 cm]

Finished chest
Extra-Small/Small 40 ins [101.5 cm]
Medium 44 ins [112 cm]
Large 48 ins [122 cm]
Extra-Large 50 ins [127 cm]
2/3 Extra-Large 58 ins [147.5 cm]
4/5 Extra-Large 64 ins [162.5 cm]

Hat: One size to fit average adult.

GAUGE

11 sts and 16 rows = 4 ins [10 cm] with larger needles in stocking st.

MATERIALS

Bernat® Roving (100 g/3.5 oz; 109 m/120 yds)		
HAT		
	Main Color (MC) #00011 (Bark)	1 ball
	Contrast A #00100 (Rice Paper)	1 ball
	Contrast C #00033 (Flint)	1 ball

Set of four sizes 6.5 mm (U.S. 10½) and 8 mm (U.S. 11) double-pointed knitting needles **or size needed to obtain gauge.**



E-BOOK DOWNLOADS

Tuff Toddler

Hot Cocoa Cardigan and Hat

Reindeer Games

Hardcore

Skull Hoodie

Thunderbird

Cold Snap



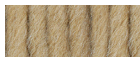

HELPFUL LINKS

Abbreviations

Skill level info

Yarn info

Needle conversion charts

Bernat® Roving (100 g/3.5 oz; 109 m/120 yds)								
Sizes (JACKET)		Extra-Small/ Small	Medium	Large	Extra Large	2/3 Extra Large	4/5 Extra Large	
	Main Color (MC) #00011 (Bark)	5	6	6	7	7	8	Balls
	Contrast A #00100 (Rice Paper)	1	1	1	2	2	2	Ball(s)
	Contrast B #00021 (Cork)	1	1	1	1	1	1	Ball
	Contrast C #00033 (Flint)	1	1	1	1	1	1	Ball
Sizes 6.5 mm (U.S. 10½) and 8 mm (U.S. 11) knitting needles or size needed to obtain gauge. 3 st holders. Separating zipper.								

3. REINDEER GAMES

The instructions are written for smallest size. If changes are necessary for larger sizes the instructions will be written thus (). Numbers for each size are shown in the same color throughout the pattern. When only one number is given in black, it applies to all sizes.

JACKET

BACK

With MC and smaller needles, cast on **55** (**61-67-69-79-89**) sts.

1st row: (RS). K1. *P1. K1. Rep from * to end of row.

2nd row: P1. *K1. P1. Rep from * to end of row.

Rep last 2 rows (K1. P1) ribbing until work from beg measures 4 ins [10 cm], ending with a 2nd row.

Change to larger needles and proceed in stocking st for 2 rows, ending with a purl row.

Work Chart I in stocking st until row 32 of chart is complete, reading **knit** rows from **right** to left and **purl** rows from **left** to right.

Armhole shaping: Keeping cont of Chart I, cast off **3** (**3-3-4-4-5**) sts beg next 2 rows.

49 (**55-61-61-71-79**) sts.

Next row: K2. K2tog. Work chart to last 4 sts. ssk. K2.

Work **3** (**3-1-1-1-1**) row(s) even from chart.

Rep last **4** (**4-2-2-2-2**) rows **2** (**3-5-5-8-10**) times more. **43** (**47-49-49-53-57**) sts.

Cont working Chart I until row 56 of chart is complete.

With MC, cont even until armhole measures **8½** (**9-9-9½-9½-10**) ins [**21.5** (**23-23-24.5-24.5-25.5**) cm], ending with a purl row.

Shoulder shaping: Cast off **11** (**13-13-13-14-16**) sts beg next 2 rows. Leave rem **21** (**21-23-23-25-25**) sts on a st holder.

LEFT FRONT

With MC and smaller needles, cast on **27 (**29-33-33-39-43**) sts.

Work 4 ins [10 cm] in (K1. P1) ribbing as given for Back, ending with a 2nd row and inc **0** (**1-0-1-0-1**) st in center of last row. **27** (**30-33-34-39-44**) sts.

Change to larger needles and proceed in stocking st for 2 rows, ending with a purl row.**

Work Chart I in stocking st until row 32 of chart is complete.

Armhole shaping: Keeping cont of Chart I, cast off **3** (**3-3-4-4-5**) sts beg next row. **24** (**27-30-30-35-39**) sts.

Next row: Work even from chart.

Next row: K2. K2tog. Work chart to end of row.

Work **3** (**3-1-1-1-1**) row(s) even from chart.

Rep last **4** (**4-2-2-2-2**) rows **2** (**3-5-5-8-10**) times more. **21** (**23-24-24-26-28**) sts. Cont working Chart I to row 56 of chart, ending with a purl row.

With MC, cont even until armhole measures **6** (**6-6-6½-6½-7**) ins [**15** (**15-15-16.5-16.5-18**) cm], ending with a purl row.

Neck shaping: Next row: Knit to last **5** (**5-5-5-6-6**) sts. **Turn.** Slip rem **5** (**5-5-5-6-6**) sts onto a st holder.

Next row: Purl.

Next row: Knit to last 4 sts. ssk. K2.

Next row: Purl.

Rep last 2 rows **4** (**4-5-5-5-5**) times more. **11** (**13-13-13-14-16**) sts.

Cont even until armhole measures same length as Back, ending with a purl row. Cast off.

RIGHT FRONT

Work from ** to ** as given for Left Front.

Work Chart I in stocking st until row 33 of chart is complete.

Armhole shaping: Keeping cont of Chart I, cast off **3** (**3-3-4-4-5**) sts beg next row. **24** (**27-30-30-35-39**) sts.

Next row: Work chart to last 4 sts. ssk. K2.

Work **3** (**3-1-1-1-1**) row(s) even from chart.

Rep last **4** (**4-2-2-2-2**) rows **2** (**3-5-5-8-10**) times more. **21** (**23-24-24-26-28**) sts. Cont working Chart I until row 56 of chart is complete.

With MC, cont even until armhole measures **6** (**6-6-6½-6½-7**) ins [**15** (**15-15-16.5-16.5-18**) cm], ending with a knit row.

Neck shaping: Next row: Purl to last 5 (5-5-5-6-6) sts. **Turn.** Slip rem 5 (5-5-5-6-6) sts onto a st holder.

Next row: K2. K2tog. Knit to end of row.

Next row: Purl.

Rep last 2 rows 4 (4-5-5-5-5) times more. 11 (13-13-13-14-16) sts.

Cont even until armhole measures same length as Back, ending with a knit row. Cast off.

SLEEVES

With MC and larger needles, cast on 29 (29-31-31-33-33) sts.

Work 5½ ins [14 cm] in (K1. P1) ribbing as given for Back.

Place markers at each end of last row.

Work 2 rows in stocking st.

Work Chart II for Left Sleeve or Chart III for Right Sleeve in stocking st to end of chart, reading **knit** rows from **right to left** and purl rows from **left** to right, inc 1 st each end of needle on 7th and every following 8th row to 39 (39-41-41-43-43) sts.

With MC, cont in stocking st inc 1 st each end of next row and following 8th row(s) 0 (1-1-2-2-2) time(s) more. 39 (41-43-45-47-47) sts.

Cont even until work from markers (end of ribbing) measures 15 ins [38 cm], ending with a purl row.

Shape top: With MC, cast off 3 (3-3-4-4-5) sts beg next 2 rows. 33 (35-37-37-39-37) sts.

Next row: K2. K2tog. Knit to last 4 sts. ssk. K2.

Work 3 rows even.

Rep last 4 rows 3 times more. 25 (27-29-29-31-29) sts.

Next row: K2. K2tog. Knit to last 4 sts. ssk. K2.

Next row: Purl.

Rep last 2 rows 3 (4-4-4-5-5) times more. 17 (17-19-19-19-17) sts.

Cast off 3 (3-4-4-4-3) sts beg next 2 rows. Cast off rem 11 sts.

Sew shoulder seams.

Collar: With RS facing, MC and smaller needles, K5 (5-5-5-6-6) from Left Front st holder. Pick up and knit 14 (14-15-15-16-16) sts up Left Front neck edge. K21 (21-23-23-25-25) from Back st holder. Pick up and knit 14 (14-15-15-16-16) sts down Right Front neck edge. K5 (5-5-5-6-6) from right front st holder. 59 (59-63-63-69-69) sts.

1st row: (WS). P1. *K1. P1. Rep from * to end of row.

2nd row: K1. *P1. K1. Rep from * to end of row.

Rep last 2 rows of ribbing until Collar measures 5½ ins [14 cm]. Cast off loosely in ribbing.

FINISHING

Sew in sleeves. Sew side and sleeve seams.

Zipper edging: With RS facing, smaller needles and MC, pick up and knit 57 (59-61-61-63-63) sts evenly along front edge. Cast off (WS).

Sew in zipper under edgings.

HAT

Beg at top, with set of four larger needles and MC, cast on 4 sts.

1st rnd: (Inc 1 st in next st) 4 times. 8 sts. Divide sts evenly onto 3 needles (3, 3, 2). Join in rnd placing a marker on first st.

2nd and alt rnds: Knit.

3rd rnd: *Inc 1 st in next st. Rep from * around. 16 sts.

5th rnd: *Inc 1 st in next st. K1. Rep from * around. 24 sts.

7th rnd: *Inc 1 st in next st. K2. Rep from * around. 32 sts.

9th rnd: *Inc 1 st in next st. K3. Rep from * around. 40 sts.

Cont in this manner, inc 8 sts evenly around following alt rnds until there are 56 sts.

Next 3 rnds: Knit.

Next rnd: *Inc 1 st in next st. K13. Rep from * around. 60 sts.

Work Chart IV to end of chart, noting 6 st rep will be worked 10 times.

With MC, knit in rnds until work from beg measures 8 ins [20.5 cm], inc 4 sts evenly around last rnd. 64 sts.

Change to set of four smaller needles.

Next rnd: *K1. P1. Rep from * around.

Rep last rnd for 4½ ins [11.5 cm]. Cast off in ribbing.

Pom-pom: Wind 2 strands of A around 4 fingers approx 30 times. Remove fingers and tie tightly in center. Trim to a smooth round shape. Sew to top of Hat.

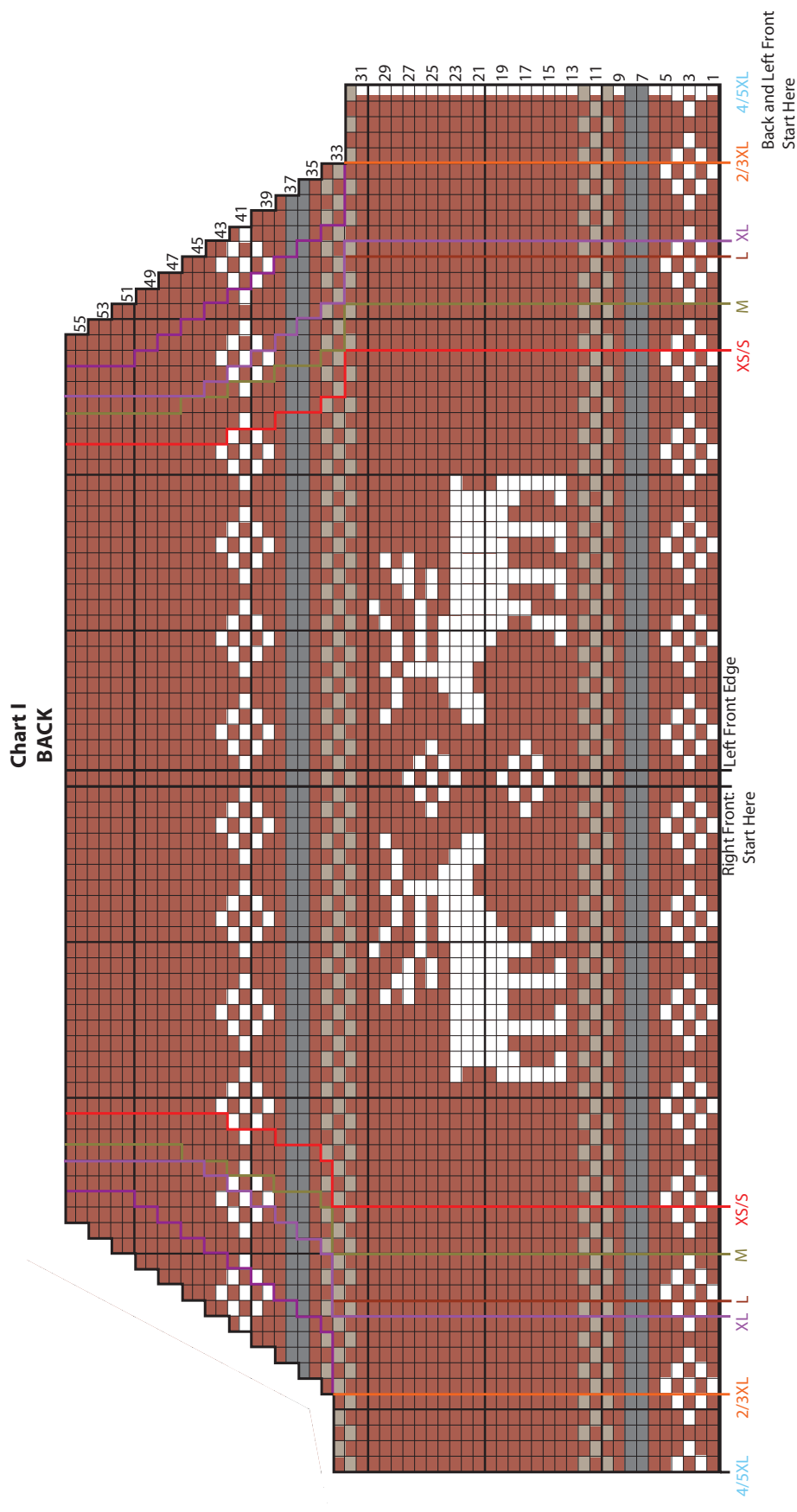
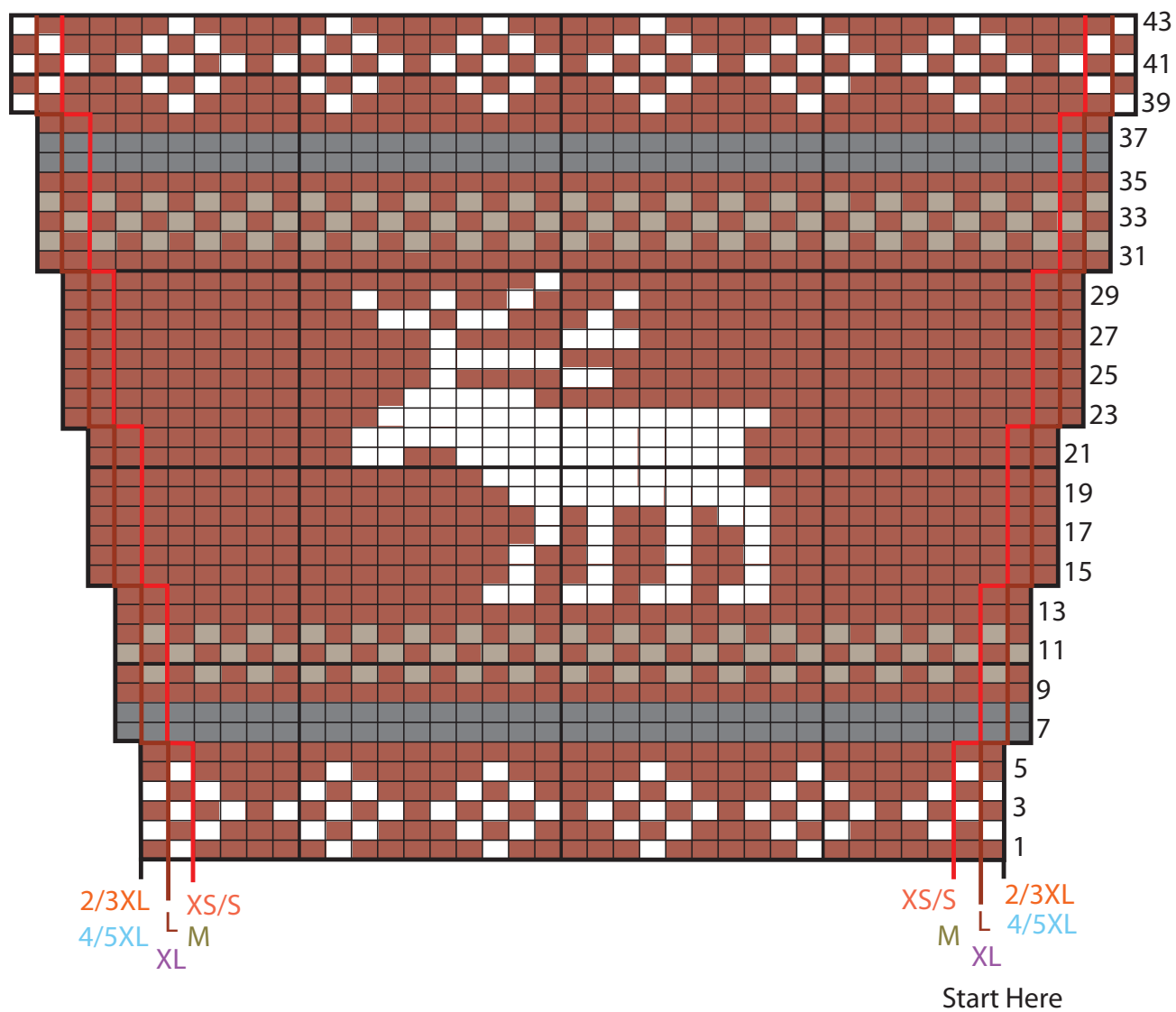


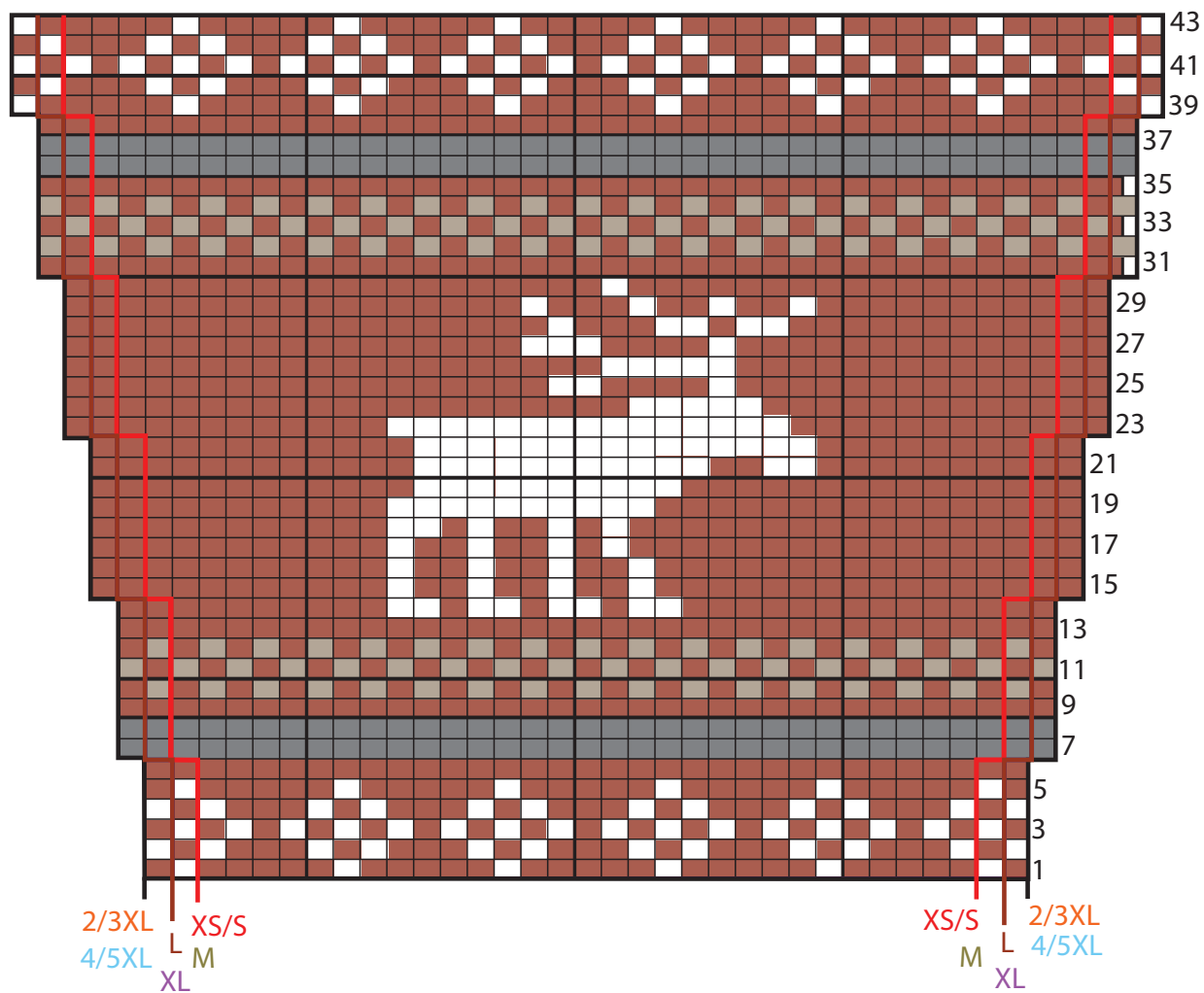
Chart II
LEFT SLEEVE



Key

- = MC
- = Contrast A
- = Contrast B
- = Contrast C

**Chart III
RIGHT SLEEVE**



Key

- = MC
- = Contrast A
- = Contrast B
- = Contrast C

**Chart IV
HAT**

