



## ABBREVIATIONS:

**Alt** = Alternate  
**Beg** = Begin(ning)  
**Cont** = Continue(ity)  
**Dec** = Decrease(ing)  
**Inc** = Increase(ing)  
**K** = Knit  
**K2tog** = Knit next 2 stitches together  
**P** = Purl  
**Pat** = Pattern  
**Rem** = Remain(ing)

**Rep** = Repeat  
**Rnd(s)** = Round(s)  
**RS** = Right side  
**Ssk** = Slip next 2 stitches knitwise. Place back onto left-hand needle and knit stitches together  
**St(s)** = Stitch(es)  
**WS** = Wrong side

 KNIT | SKILL LEVEL: INTERMEDIATE

## SIZES

To fit bust measurement

**XS/S** 28-34" [71-86.5 cm]  
**M** 36-38" [91.5-96.5 cm]  
**L** 40-42" [101.5-106.5 cm]  
**XL** 44-46" [112-117 cm]  
**2/3XL** 48-54" [122-137 cm]  
**4/5X** 56-62" [142-157.5 cm]

## Finished bust

**XS/S** 37" [97 cm]  
**M** 40" [101.5 cm]  
**L** 44" [112 cm]  
**XL** 48" [122 cm]  
**2/3XL** 55" [139.5 cm]  
**4/5XL** 63" [160 cm]

## GAUGE

14 sts and 19 rows = 4" [10 cm] in stocking st with larger needles.

## INSTRUCTIONS

*The instructions are written for smallest size. If changes are necessary for larger size(s) the instructions will be written thus ( ). Numbers for each size are shown in the same color throughout the pattern. When only one number is given in black, it applies to all sizes.*

**Leaf Cluster St** (worked in rows 27 to 84 of Chart I-multiple of 8 sts plus 4)

## MATERIALS

**Bernat® Maker Fashion™** (3.5 oz/100 g; 126 yds/115 m)

**Sizes** XS/S M L XL 2/3XL 4/5XL

Gray (06008) 9 10 11 12 13 15 balls

1060 yds/965 m 1170 yds/1065 m 1280 yds/1165 m 1400 yds/1274 m

1670 yds/1520 m 1770 yds/1611 m

Sizes U.S. 10 (6 mm) and U.S. 10½ (6.5 mm) knitting needles. Size U.S. 10½ (6.5 mm) circular knitting needle 16" [40.5 cm] long **or size needed to obtain gauge.** Stitch marker. 2 stitch holders.

**Note:** When working Leaf Cluster St st count will vary on 2nd and 6th rows.

**1st row:** (RS). K4. \*K2tog. ssk. K4. Rep from \* across.

**2nd and alt rows:** Purl.

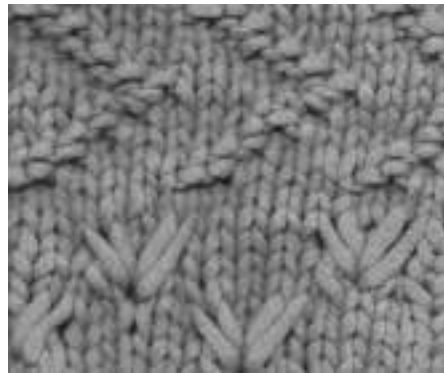
**3rd row:** K4. \*Draw up a long loop in space between K2tog and ssk on 1st row and place on right-hand needle. K2. Draw up a long loop in same space between K2tog and ssk and place on right-hand needle. K4. Rep from \* across.

**5th row:** \*K2tog. ssk. K4. Rep from \* to last 4 sts. K2tog. ssk.

**7th row:** \*Draw up a long loop in space between K2tog and ssk on 5th row and place on right-hand needle. K2. Draw up a long loop in same space between K2tog and ssk and place on right-hand needle.\*\* K4. Rep from \*, ending at \*\*.

**8th row:** Purl.

These 8 rows form Leaf Cluster St.



## INSTRUCTIONS

### FRONT

With smaller needles cast on **79 (85-93-101-113-127)** sts.

**1st row:** (RS). \*K1. P1. Rep from \* to last st. K1.

**2nd row:** \*P1. K1. Rep from \* to last st. P1.

Rep last 2 rows (K1. P1) ribbing for 2½" [6 cm], ending on a 2nd row and dec 1 st in center of last row. **78 (84-92-100-112-126)** sts.

Change to larger needles and work Chart I noting **RS** rows are worked from **right** to left and **WS** rows are worked from **left** to right and noting side shaping on 15th row and following 14th rows 4 times more. **68 (74-82-90-102-116)** sts rem. Chart I shown on page 4.

Cont working even from Chart until row 76 of Chart is complete.

**Shape armholes:** Keeping cont of chart, cast off **5 (6-7-8-10-12)** sts at beg of next 2 rows. **58 (62-68-74-82-92)** sts.

**Sizes XL, 2/3XL and 4/5XL only:** Keeping cont of pat, dec 1 st each end of next (5-11-15) rows. (64-60-62) sts.

Work 1 row even in pat.

**All sizes:** Keeping cont of pat, dec 1 st each end of next row and following alt rows **4 (5-6-4-1-1)** time(s) more. **48 (50-54-54-56-58)** sts.

Box St pat is now in position.

Cont even in Box St pat until armhole measures **7½ (8-8½-9-9½-10)" [19 (20.5-21.5-23-24-25.5) cm]**, ending on a WS row.

**Shape shoulders:** Keeping cont of pat, cast off **5 (5-6-6-6-6)** sts at beg of next 2 rows, then **5 (6-6-6-6-7)** sts at beg of following 2 rows. Leave rem **28 (28-30-30-32-32)** sts on a st holder.

### BACK

Work as for Front **EXCEPT** read Chart I noting **RS** rows are worked from **left** to right and WS rows are worked from **right** to left to reverse pat placement and to allow pat to match at side seams.

### LEFT SLEEVE

With smaller needles, cast on **33 (35-35-37-39-41)** sts.

Work 2 rows in (K1. P1) ribbing as given for Front, inc 1 st in center of last row. **34 (36-36-38-40-42)** sts.

Change to larger needle and work Chart II noting **RS** rows are worked from **right** to left and **WS** rows are worked from **left** to right and noting side shaping on 15th row and following 10th rows 6 times more. **48 (50-50-52-54-56)** sts. Chart II shown on page 4. Cont working even from Chart until row 84 of Chart is complete. Box St pat is now in position.

**Shape top:** Keeping cont of Box St pat, cast off **5 (6-6-7-8-9)** sts at beg of next 2 rows. 38 sts.

## BERNAT® TEXTURE MIX KNIT TUNIC | KNIT

### Sizes L, XL, 2/3XL and 4/5XL only:

Keeping cont of pat, dec 1 st each end of next row and following 4th rows (2-3-4-5) times more. (32-30-28-26) sts.  
Work 1 row even in pat.

**All sizes:** Keeping cont of pat, dec 1 st each end of next row and following alt rows until there are 18 (18-20-20-20) sts.  
Dec 1 st each end of next 5 rows.  
Cast off rem 8 (8-10-10-10) sts.

### RIGHT SLEEVE

Work as for Left Sleeve **EXCEPT** read Chart II noting RS rows are worked from **left** to right and WS rows are worked from **right** to left to reverse pat placement.

### FINISHING

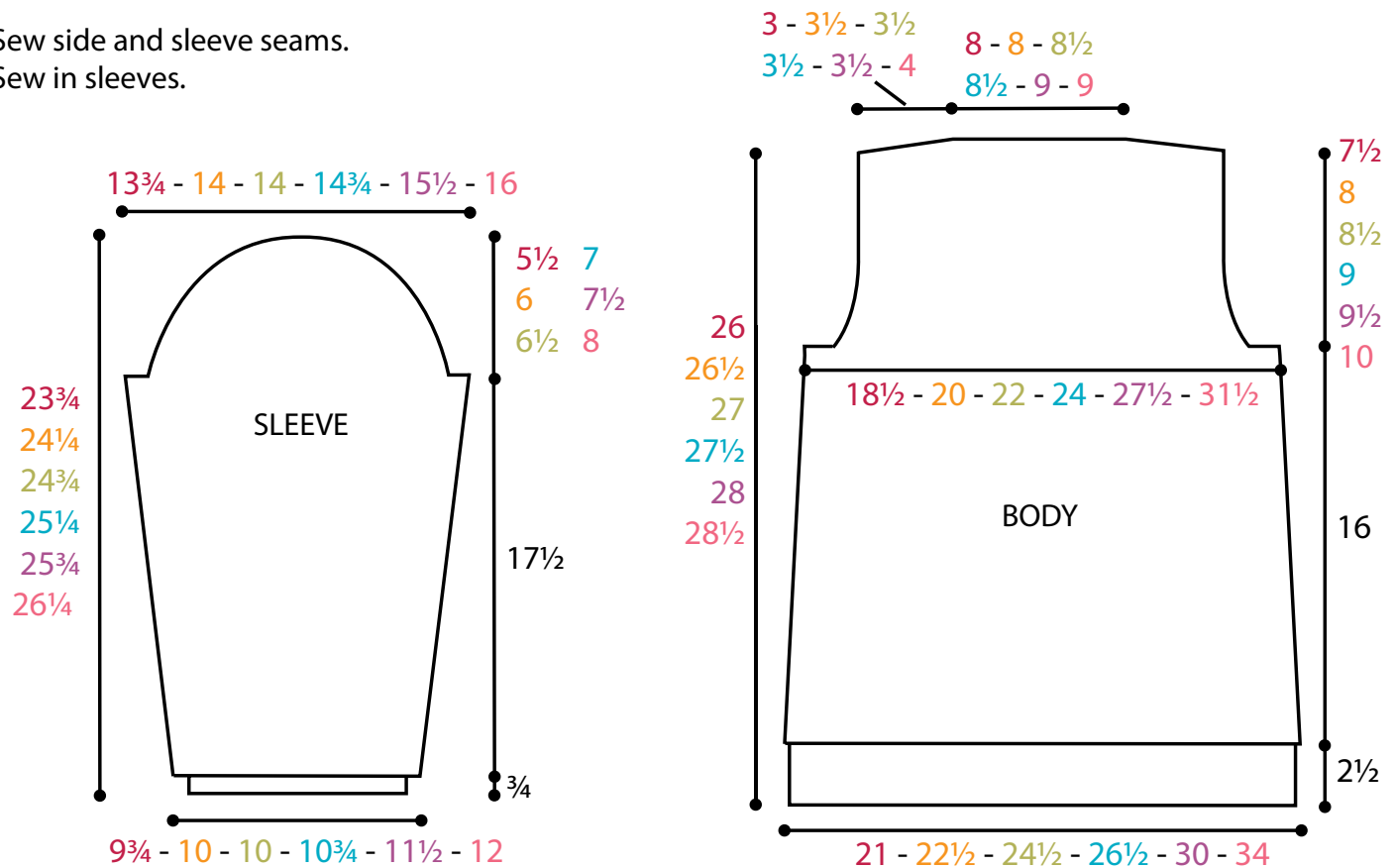
Block all pieces to measurements.  
Cover with a damp cloth leaving cloth to dry.  
Sew shoulder seams.

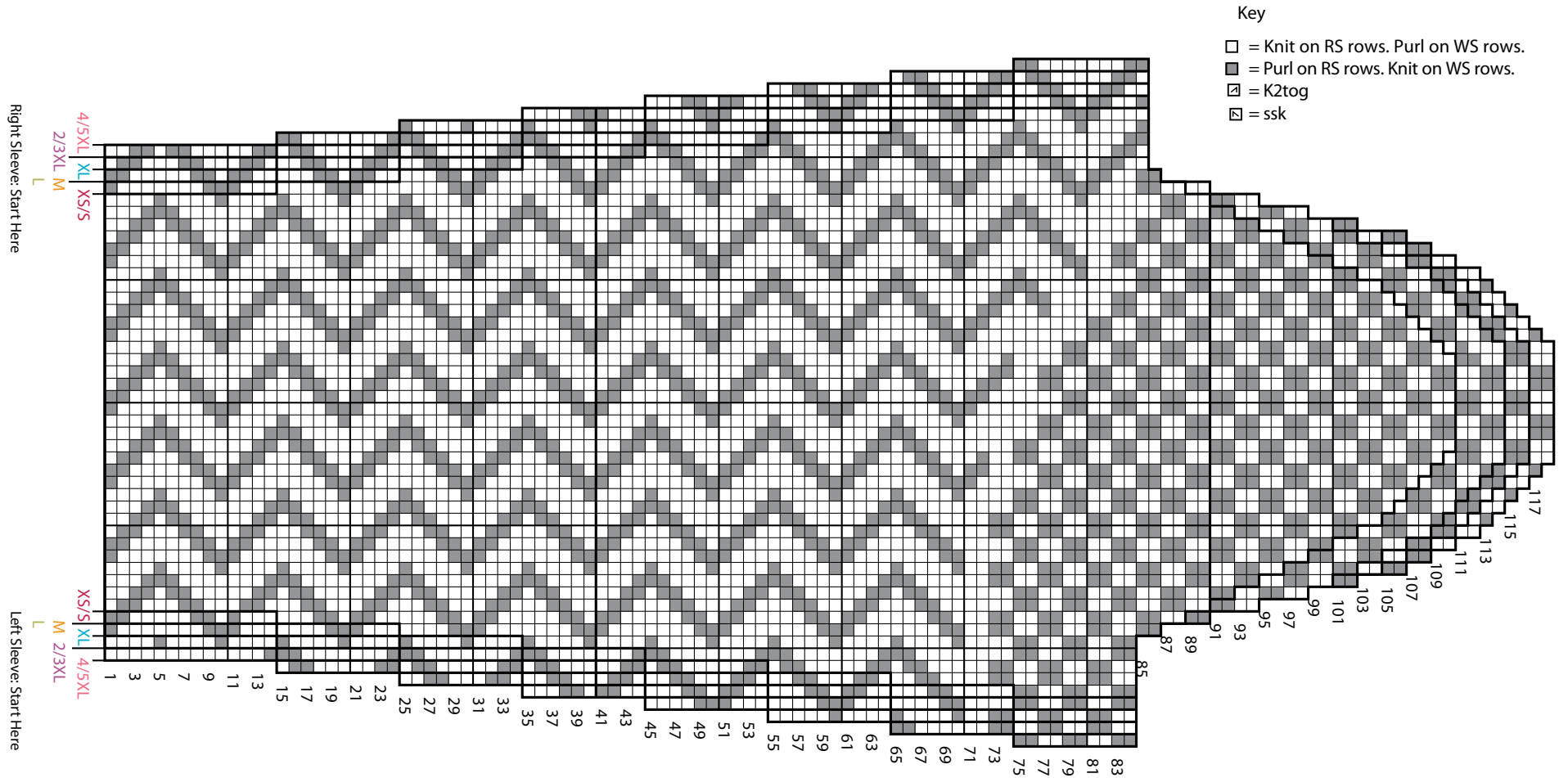
**Collar:** With RS facing and larger circular needle, work Box St pat (as placed) across 28 (28-30-30-32-32) sts on Back st holder, then work Box St pat (as placed) across 28 (28-30-30-32-32) sts on Front

st holder. 56 (56-60-60-64-64) sts.  
Join in rnd, placing a marker on first st.

Working in rnds, cont in Box St pat until Collar measures 6" [15 cm].  
Work 3 rnds in (K1. P1) ribbing.  
Cast off in ribbing.

Sew side and sleeve seams.  
Sew in sleeves.





Refer to pattern text for final rows

**Key**

- = Knit on RS rows. Purl on WS rows.
- = Purl on RS rows. Knit on WS rows.
- ⊠ = K2tog
- ⊞ = ssk
- ∩ = Loop (Leaf Cluster St)

