



MATERIALS

Bernat® Sheep(ish)™ by Vickie Howell (3 oz/85 g; 167 yds/153 m)

Sizes	XS/S	M	L	XL	2/3XL	4/5XL	
Grey(ish) (00003)	8	9	10	11	12	14	balls

Sizes U.S. 7 (4.5 mm) and U.S. 8 (5 mm) knitting needles. Size U.S. 7 (4.5 mm) circular knitting needle 24" [60 cm] long **or size needed to obtain gauge**. Cable needle. 3 stitch holders. 4 stitch markers.

 KNIT | SKILL LEVEL: INTERMEDIATE

SIZES

To fit bust measurement

Extra-Small/Small 28-34" [71-86.5 cm]
Medium 36-38" [91.5-96.5 cm]
Large 40-42" [101.5-106.5 cm]
Extra-Large 44-46" [112-117 cm]
2/3 Extra-Large 48-54" [122-137 cm]
4/5 Extra-Large 56-62" [142-157.5 cm]

Finished bust

Extra-Small/Small 39" [99 cm]
Medium 43" [109 cm]
Large 47" [119.5 cm]
Extra-Large 51" [129.5 cm]
2/3 Extra-Large 59" [150 cm]
4/5 Extra-Large 63" [160 cm]

GAUGE

18 sts and 24 rows = 4" [10 cm] with larger needles in stocking st.

INSTRUCTIONS

The instructions are written for smallest size. If changes are necessary for larger sizes the instructions will be written thus (). When only one number is given, it applies to all sizes. For ease in working, circle all numbers pertaining to your size.

Panel Pat A (worked over 46 sts).

(See Chart on page 2).

1st row: (RS). (P1. K3) twice. P6. K3. P1. K3. P4. K3. P1. K3. P6. (K3. P1) twice.

2nd and alt rows: Knit all knit sts and purl all purl sts as they appear.

3rd row: T4B. P1. T4F. P3. (T5B. P1. T5F) twice. P3. T4B. P1. T4F.

5th row: K3. P3. T5F. T4B. P5. C6F. P5. T4F. T5B. P3. K3.

7th row: T4F. P4. C6F. P5. T4B. T4F. P5. C6F. P4. T4B.

9th row: P1. T4F. P1. T5B. T4F. P3. T4B. P2. T4F. P3. T4B. T5F. P1. T4B. P1.

11th row: P2. C7B. P3. K3. P3. K3. P4. K3. P3. K3. P3. C7B. P2.

13th row: P1. T4B. P1. T5F. T4B. P3. T4F. P2. T4B. P3. T4F. T5B. P1. T4F. P1.

15th row: T4B. P4. C6F. P5. T4F. T4B. P5. C6F. P4. T4F.

17th row: K3. P3. T5B. T4F. P5. C6F. P5. T4B. T5F. P3. K3.

19th row: T4F. P1. T4B. P3. (T4F. P3. T4B) twice. P3. T4F. P1. T4B.

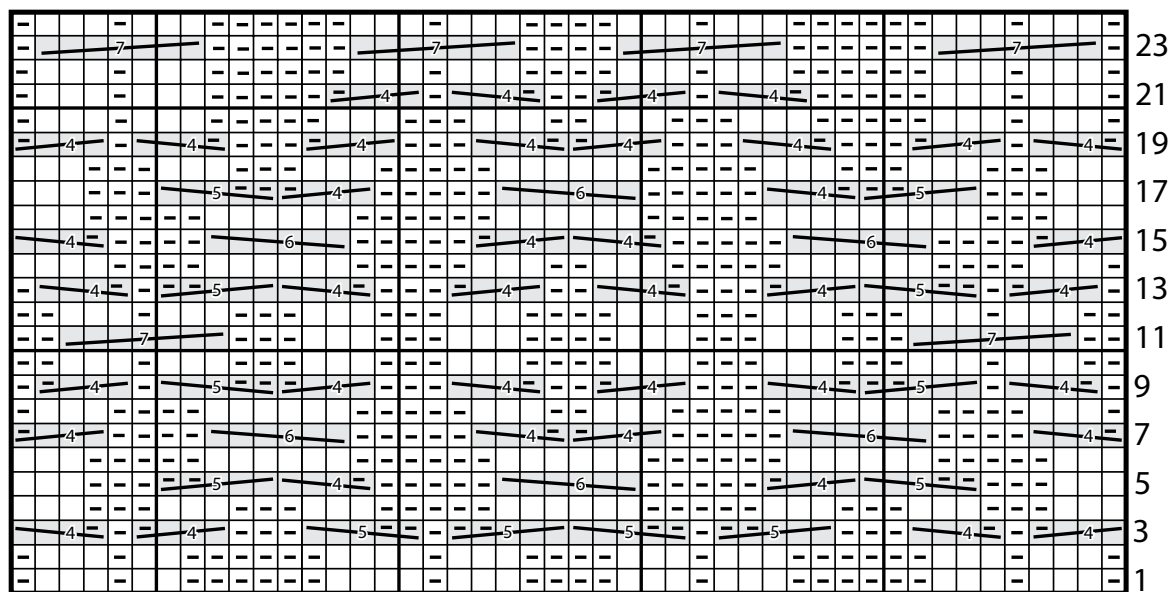
21st row: (P1. K3) twice. P3. (P2. T4F. P1. T4B) twice. P5. (K3. P1) twice.

23rd row: P1. C7B. P6. T7B. P4. C7B. P6. T7B. P1.

24th row: As 2nd row.

These 24 rows form Panel Pat A.

Panel Pat A



Start Here

Key

 = Knit on RS rows. Purl on WS rows.

 = Purl on RS rows. Knit on WS rows.

 = T4F

 = T4B

 = T5F

 = T5B

 = C6F

 = C7B

Panel Pat B (worked over 6 sts).

1st row: (RS). C4B. K2

2nd and alt rows: P6.

3rd row: K6.

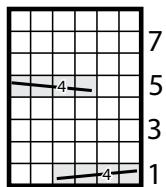
5th row: K2. C4F.

7th rows: K6.

8th row: As 2nd row.

These 8 rows form Panel Pat B.

Panel Pat B



Start Here

Key

□ = Knit on RS rows.
 □ = Purl on WS rows.

= C4B

= C4F

BACK

With larger needles, cast on **55 (65-73-83-101-109)** sts.

1st row: (WS). K1. *P1. K1. Rep from * to end of row.

This row forms Seed St Pat.

Cont in Seed St Pat, inc 1 st each end of needle on next 7 rows, every following alt row 4 times more, then every following 4th row 4 times more. **85 (95-103-113-131-139)** sts. PM at each end of last row.

Cont even in Seed St Pat until work from marked row measures **14 (14-14-15-16-16)**" [**35.5 (35.5-35.5-38-40.5-40.5)** cm], ending on a WS row.

Shape armholes: Keeping cont of pat, cast off **5 (8-8-10-12-16)** sts beg of next 2 rows. **75 (79-87-93-107-107)** sts.

Dec 1 st each end of needle on next **5 (5-5-9-9)** rows, then every following alt row **3 (3-5-4-4-4)** times. **59 (63-67-75-81-81)** sts.

Cont even in pat until armhole measures **8 (8-8½-8½-9-9½)**" [**20.5 (20.5-21.5-21.5-23-24)** cm], ending on a WS row.

Shape shoulders: Cast off **5 (5-6-7-8-8)** sts beg next 2 rows, then **5 (6-6-8-9-9)** sts beg following 2 rows. Leave rem **39 (41-43-45-47-47)** sts on a st holder.

FRONT

Left side: With larger needles, cast on 3 sts. PM at beg of row.

1st and 2nd rows: K1. P1. K1. These 2 rows form Seed St Pat.

Cont in Seed St Pat as follows:

3rd row: (RS). K1. P1. Kfb. 4 sts.

4th row: (P1. K1) twice.

5th row: (K1. P1) twice.

6th row: As 4th row.

7th row: K1. P1. K1. Kfb. 5 sts.

8th to 10th rows: (K1. P1) twice. K1.

11th row: (K1. P1) twice. Kfb. 6 sts.

12th row: *P1. K1. Rep from * to end of row.

13th row: *K1. P1. Rep from * to last 2 sts. K1. Kfb. 7 sts.

14th row: K1. *P1. K1. Rep from * to end of row.

15th row: *K1. P1. Rep from * to last st. Kfb. 8 sts.

16th to 23rd rows: As 12th to 15th rows twice more. 12 sts at end of last row.

24th row: Kfb. *K1. P1. Rep from * to last st. K1. 13 sts.

25th row: *K1. P1. Rep from * to last st. Kfb. 14 sts.

26th to 29th rows: As 24th and 25th rows twice. 18 sts at end of last row.

30th row: Cast on 2 sts. Pat to end of row. 20 sts.

31st row: Pat to last st. Kfb. 21 sts.

32nd row: Cast on 3 sts. Pat to end of row. 24 sts.

33rd row: As 31st row. 25 sts. Break yarn.

Leave all sts on a st holder.

Right side: With larger needles, cast on 3 sts. PM at end of row.

1st and 2nd rows: K1. P1. K1.

These 2 rows form Seed St Pat.

Cont in Seed St Pat as follows:

3rd row: (RS). Kfb. P1. K1. 4 sts.

4th row: (K1. P1) twice.

5th row: (P1. K1) twice.

6th row: As 4th row.

7th row: Kfb. K1. P1. K1. 5 sts.

8th to 10th rows: (K1. P1) twice. K1.

11th row: Kfb. (P1. K1) twice. 6 sts.

12th row: *K1. P1. Rep from * to end of row.

13th row: Kfb. *K1. P1. Rep from * to last st. K1. 7 sts.

14th row: K1. *P1. K1. Rep from * to end of row.

15th row: Kfb. *P1. K1. Rep from * to end of row. 8 sts.

16th to 23rd rows: As 12th to 15th rows twice more. 12 sts at end of last row.

24th row: *K1. P1. Rep from * to last 2 sts. K1. Kfb. 13 sts.

25th row: Kfb. *P1. K1. Rep from * to end of row. 14 sts.

26th and 27th rows: As 24th and 25th rows. 16 sts.

28th row: As 24th row. 17 sts.

29th row: Cast on 2 sts. Pat to end of row. 19 sts.

30th row: Pat to last st. Kfb. 20 sts.

31st row: Cast on 3 sts. Pat to end of row. 23 sts.

32nd rows: As 30th row. 24 sts

33rd row: Pat to last st. Kfb. 25 sts. **Do not** break yarn.

Join Right and Left sides: 1st row: (WS). Pat across 25 sts of Right side. **Turn.** Cast on 44 (56-64-74-92-100) sts. Pat across 25 sts of Left Side. 94 (106-114-124-142-150) sts.

Proceed in Cable Pats as follows:

1st row: (RS). Pat across 15 (21-25-30-39-43) sts. P1. Work 1st row of Panel Pat B. P2. Work 1st row of Panel Pat A. P2. Work 1st row of Panel Pat B. P1. Pat across 15 (21-25-30-39-43) sts.

2nd row: Pat across 15 (21-25-30-39-43) sts. K1. Work 2nd row of Panel Pat C. K2. Work 2nd row of Panel Pat A. K2. Work 2nd row of Panel Pat B. K1. Pat across 15 (21-25-30-39-43) sts. Panel Pats A and B are now in position.

Cont in established pat until work from beg measures same length as back from marked row to armhole shaping, ending on a WS row.

Shape armholes: Keeping cont of pat, cast off 5 (8-8-10-12-16) sts beg of next 2 rows. 84 (90-98-104-118-118) sts.

Dec 1 st each end of needle on next 5 (5-5-9-9) rows, then every following alt row 3 (3-5-4-4-4) times. 68 (74-78-86-92-92) sts.

Cont even in pat until armhole measures 5½ (5½-6-6-6-6½)" [14 (14-15-15-15-16.5) cm], ending on a WS row.

Shape neck: 1st row: (RS). Pat across 17 (18-19-22-24-24) sts. **Turn.** Leave rem sts on a spare needle.

Dec 1 st at neck edge on next 4 rows, then every following alt row 3 times more. 10 (11-12-15-17-17) sts.

Cont even in pat until armhole measures same length as Back before shoulder shaping, ending on a WS row.

Shape shoulder: 1st row: (RS). Cast off 5 (5-6-7-8-8) sts. Pat to end of row. **2nd row:** Work even in pat. Cast off rem 5 (6-6-8-9-9) sts.

With RS facing, slip next 34 (38-40-42-44-44) sts onto a st holder. Pat to end of row. Dec 1 st at neck edge on next 4 rows, then every following alt row 3 times more. 10 (11-12-15-17-17) sts.

Cont even in pat until armhole measures same length as Back before shoulder shaping, ending on a RS row.

Shape shoulder: 1st row: (WS). Cast off 5 (5-6-7-8-8) sts. Pat to end of row.

2nd row: Work even in pat. Cast off rem 5 (6-6-8-9-9) sts.

SLEEVES

With smaller needles, cast on 48 (48-48-52-56-56) sts.

1st row: (RS). (K1. P1) 8 (8-8-9-10-10) times. K4. P2. K4. P2. K4. (P1. K1) 8 (8-8-9-10-10) times.

2nd row: (P1. K1) 8 (8-8-9-10-10) times. P4. K2. P4. K2. P4. (K1. P1) 8 (8-8-9-10-10) times.

Rep last 2 rows 5 times more.

Next row: (RS). (K1. P1) 8 (8-8-9-10-10) times. (K1. M1. K2. M1. K1. P2) twice. K1. M1. K2. M1. K1. (P1. K1) 8 (8-8-9-10-10) times. 54 (54-54-58-62-62) sts.

Next row: (P1. K1) 8 (8-8-9-10-10) times. P6. K2. P6. K2. P6. (K1. P1) 8 (8-8-9-10-10) times.

Change to larger needles and proceed as follows:

1st row: (RS). Pat across 16 (16-16-18-20-20) sts. (Work 1st row of Panel Pat B. P2) twice. Work 1st row of Panel Pat B. Pat across 16 (16-16-18-20-20) sts.

2nd row: Pat across 16 (16-16-18-20-20) sts. (Work 2nd row of Panel Pat B. P2) twice. Work 2nd row of Panel Pat B. Pat across 16 (16-16-18-20-20) sts.

Panel Pat B is now in position.

Keeping cont of pat, inc 1 st each end of needle on next and every following 8th (6th-6th-4th-2nd-2nd) row until there are 64 (68-72-64-70-94) sts, then every following 10th (8th-8th-6th-4th-4th) row until there are 66 (72-78-82-96-106) sts, taking inc sts into Seed St Pat.

Cont even in pat until work from beg measures 17½ (18-18½-18½-17-16)" [44.5 (45.5-47-47-43-40.5) cm], ending on a WS row.

Shape top: Cast off 3 (4-4-5-6-8) sts beg of next 2 rows. 60 (64-70-72-84-90) sts.

Next row: (RS). K2. K2tog. Pat to last 4 sts. K2togtbl. K2.

Next row: Work even in pat. Rep last 2 rows 8 (9-8-9-15-18) times more. 42 (44-52-52-52-52) sts.

Next row: (RS). K2. K2tog. Pat to last 4 sts. K2togtbl. K2.

Next row: P2. P2togtbl. Pat to last 4 sts. P2tog. P2.

Rep last 2 rows to 10 (10-12-12-14-16) sts. Cast off.

FINISHING

Pin garment pieces to measurements. Cover with a damp cloth, leaving cloth to dry.

Front Lower Ribbing: With RS facing and circular needle, pick up and knit

178 (198-214-234-270-290) sts across bottom of Front. **Do not** join. Working back and forth across needle in rows, proceed as follows:

1st row: (WS). P2. *K2. P2. Rep from * to end of row.

2nd row: K2. *P2. K2. Rep from * to end of row.

Rep these 2 rows of (K2. P2) ribbing 4 times more. Cast off in ribbing.

Back Lower Ribbing: Work as for Front Lower Ribbing, picking up sts between markers.

Collar: Sew right shoulder seam.

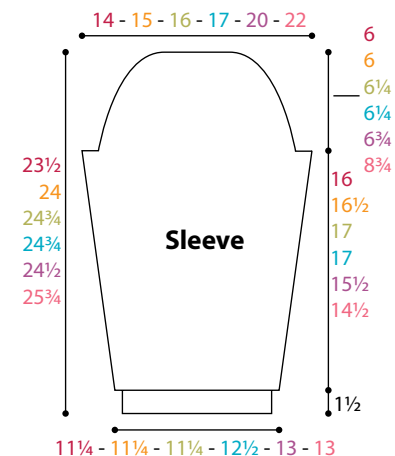
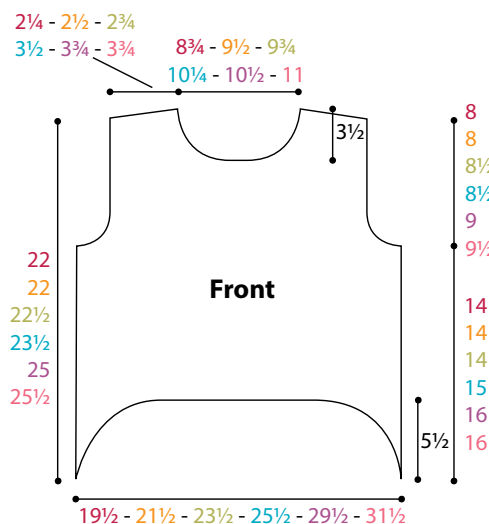
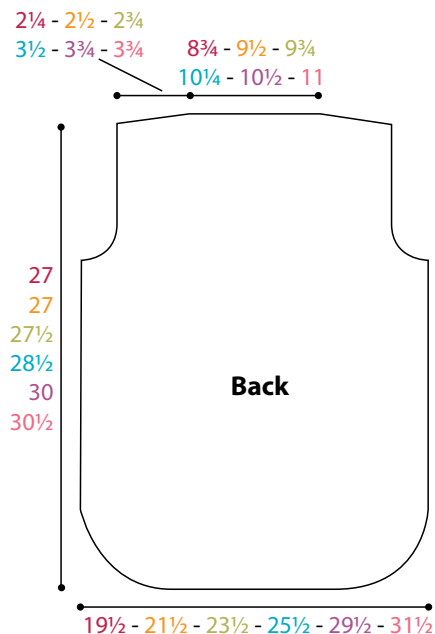
With RS facing and smaller needles, pick up and knit **15 (15-15-17-19-19)** sts down left front neck edge. Pat **34 (38-40-42-44-44)** sts from front st holder, dec **9 (11-11-11-11-11)** sts evenly across. Pick up and knit **15 (15-15-17-19-19)** sts up right front neck edge. Pat **39 (41-43-45-47-47)** sts from back st holder. **94 (98-102-110-118-118)** sts.

1st row: (WS). P2. *K2. P2. Rep from * to end of row.

2nd row: K2. *P2. K2. Rep from * to end of row.

Rep last 2 rows (K2. P2) ribbing for 4" [10 cm]. Cast off in ribbing.

Sew left shoulder and collar seam. Sew in sleeves. Sew side and sleeve seams.



ABBREVIATIONS:

Alt = Alternate(ing)
Beg = Beginning
C4B = Slip next 2 stitches onto a cable needle and leave at back of work. K2, then K2 from cable needle
C4F = Slip next 2 stitches onto a cable needle and leave at front of work. K2, then K2 from cable needle.
C6F = Slip next 3 stitches onto a cable needle and leave at front of work. K3, then K3 from cable needle
C7B = Slip next 4 stitches onto a cable needle and leave at back of work. K3, then (P1. K3) from cable needle
Cont = Continue(ity)

Dec = Decrease(ing)
Inc = Increase(ing)
K = Knit
K2togtbl = Knit next 2 stitches through back loops
Kfb = Increase 1 stitch by knitting into front and back of next stitch
M1 = Make 1 stitch by picking up horizontal loop lying before next stitch and knitting into back of loop
P = Purl
P2togtbl = Purl next 2 stitches through back loops
Pat = Pattern
PM = Place marker
Rem = Remaining

Rep = Repeat
RS = Right side
St(s) = Stitch(es)
T4B = Slip next stitch onto a cable needle and leave at back of work. K3, then P1 from cable needle
T4F = Slip next 3 stitches onto a cable needle and leave at front of work. P1, then K3 from cable needle
T5B = Slip next 2 stitches onto a cable needle and leave at back of work. K3, then P2 from cable needle
T5F = Slip next 3 stitches onto a cable needle and leave at front of work. P2, then K3 from cable needle
WS = Wrong side