



## SIZES

### Vest

<b>To fit bust measurement</b>
<b>Extra-Small/Small</b> 28-34 ins [ 71-86.5 cm ]
<b>Medium</b> 36-38 ins [ 91.5-96.5 cm ]
<b>Large</b> 40-42 ins [ 101.5-106.5 cm ]
<b>Extra-Large</b> 44-46 ins [ 112-117 cm ]
<b>2/3 Extra-Large</b> 48-54 ins [ 122-137 cm ]
<b>4/5 Extra-Large</b> 56-62 ins [ 142-157.5 cm ]
<b>Finished bust</b>
<b>Extra-Small/Small</b> 40 ins [ 101.5 cm ]
<b>Medium</b> 44 ins [ 112 cm ]
<b>Large</b> 48 ins [ 122 cm ]
<b>Extra-Large</b> 50 ins [ 127 cm ]
<b>2/3 Extra-Large</b> 58 ins [ 147.5 cm ]
<b>4/5 Extra-Large</b> 64 ins [ 162.5 cm ]

**Hat:** One size to fit average lady.

## GAUGE

11 sts and 16 rows = 4 ins [10 cm] with larger needles in stocking st.

## MATERIALS

Bernat® Roving (100 g/3.5 oz; 109 m/120 yds)								
Sizes VEST		XS/S	M	L	XL	2/3 XL	4/5 XL	
	Main Color (MC) #00033 (Flint)	5	5	6	6	7	7	Balls
	Contrast A #00100 (Rice Paper)	2	3	3	3	4	4	Balls
	Contrast B #00011 (Bark)	1	1	1	1	1	1	Ball

Sizes 6.5 mm (U.S. 10½) and 8 mm (U.S. 11) knitting needles **or size needed to obtain gauge**. Size 6.5 mm (U.S. 10½) circular knitting needle for Collar. 1 st holder.



## E-BOOK DOWNLOADS

- Tuff Toddler
- Hot Cocoa Cardigan and Hat
- Reindeer Games
- Hardcore
- Skull Hoodie
- Thunderbird
- Cold Snap

## HELPFUL LINKS

- Abbreviations
- Skill level info
- Yarn info

## Needle conversion charts

Bernat® Roving (100 g/3.5 oz; 109 m/120 yds)		
HAT		
	Main Color (MC) #00033 (Flint)	1 Ball
	Contrast A #00100 (Rice Paper)	1 Ball
	Contrast C #00011 (Bark)	1 Ball

**Hat:** Set of four size 8 mm (U.S. 11) double-pointed knitting needles **or size needed to obtain gauge**. Size 6 mm (U.S. J or 10) crochet hook.

## 7. COLD SNAP

The instructions are written for smallest size. If changes are necessary for larger sizes the instructions will be written thus ( ). Numbers for each size are shown in the same color throughout the pattern. When only one number is given in black, it applies to all sizes.

### INSTRUCTIONS

#### VEST

##### BACK

With larger needles and MC, cast on **53** (57-63-67-77-83) sts.

**1st row:** (RS). K1. \*P1. K1. Rep from \* to end of row.

**2nd row:** P1. \*K1. P1. Rep from \* to end of row.

Rep last 2 rows rows of (K1. P1) ribbing for 2 ins [5 cm], ending with a 2nd row.

Proceed in stocking st until work from beg measures 9½ ins [24 cm], ending with a purl row.

Work Chart I in stocking st until row 20 of chart is complete, reading **knit** rows from **right** to left and **purl** rows from **left** to right.

**Shape sides:** Keeping cont of chart, inc 1 st each end of next 5 rows. **63** (67-73-77-87-93) sts.

Cont working chart until row **56** (56-58-58-60-60) of chart is complete.

**Sizes XS/S, M, L, XL and 2/3XL only: Shoulder shaping:** Keeping cont of chart, cast off **5** (6-7-7-8) sts beg next **4** (4-4-4-6) rows, then **6** (6-6-7-9) sts beg following **4** (4-4-4-2) rows. Leave rem **19** (19-21-21-21) sts on a st holder.

**Size 4/5XL only: Shoulder shaping:** Keeping cont of chart, cast off 9 sts beg next 8 rows. Leave rem 21 sts on a st holder.

##### LEFT FRONT

With larger needles and MC, cast on **25** (27-31-33-37-41) sts.

Work 2 ins [5 cm] in (K1. P1) ribbing as given for Back, inc **1** (1-0-0-1-0) st in center of last row and ending with a 2nd row. **26** (28-31-33-38-41) sts.

Proceed in stocking st until work from beg measures 9½ ins [24 cm], ending with a purl row.

Work Chart I in stocking st until row 20 of chart is complete, reading **knit** rows from **right** to left and **purl** rows from **left** to right.

**Shape side and neck:** Keeping cont of chart, inc 1 st at side edge of next 5 rows, AT SAME TIME, dec 1 st at neck edge on following 4th rows **9** (9-10-10-10-10) times (beg on row 25 of chart). **22** (24-26-28-33-36) sts rem.

**Sizes XS/S, M, L, and XL only: Shoulder shaping:** Keeping cont of chart, cast off **5** (6-7-7) sts beg next and following alt row, then **6** (6-6-7-9) sts beg next and following alt row.

**Size 2/3XL only: Shoulder shaping:** Keeping cont of chart, cast off 8 sts beg next and following 2 alt rows. Work 1 row even. Cast off rem 9 sts.

**Size 4/5XL only: Shoulder shaping:** Keeping cont of chart, cast off 9 sts beg next and following alt rows 3 times more.

##### RIGHT FRONT

Work as given for Left Front, noting shoulder shaping begins on a WS row.

### FINISHING

Sew shoulder seams.

**Collar:** With RS facing, circular needle and MC, beg at cast on edge of Right Front, pick up and knit 60 sts up front edge to beg of neck shaping and **34** (34-36-36-38-38) sts up right front neck edge. **K19** (19-21-21-21-21) from back st holder. Pick up and knit **34** (34-36-36-38-38) sts down left front neck edge and 60 sts down left front edge to cast on edge. **207** (207-213-213-217-217) sts.

Beg on a 2nd row, work 5 ins [12.5 cm] in (K1. P1) ribbing as given for Back. Cast off loosely in ribbing.

**Armbands:** With RS facing, smaller needles and MC, pick up and knit **55** (55-59-59-63-63) sts across armhole edge.

Beg on a 2nd row, work 3 rows in (K1. P1) ribbing as given for Back. Cast off in ribbing.

Sew side and armband seams.

**Belt:** With smaller needles and MC, cast on 7 sts.

**1st row:** (RS). K2. P1. K1. P1. K2.

**2nd row:** (K1. P1) 3 times. K1.

Rep last 2 rows until Belt (when slightly stretched) measures **56 (56-58-58-60-60)** ins [**142 (142-147.5-147.5-152.5-152.5)** cm]. Cast off in ribbing.

## HAT

Beg at top, with set of four double-pointed needles and MC, cast on 4 sts.

**1st rnd:** (Inc 1 st in next st) 4 times. 8 sts. Divide sts evenly onto 3 needles (3, 3, 2). Join in rnd placing a marker on first st.

**2nd and alt rnds:** Knit.

**3rd rnd:** \*Inc 1 st in next st. Rep from \* around. 16 sts.

**5th rnd:** \*Inc 1 st in next st. K1. Rep from \* around. 24 sts.

**7th rnd:** \*Inc 1 st in next st. K2. Rep from \* around. 32 sts.

**9th rnd:** \*Inc 1 st in next st. K3. Rep from \* around. 40 sts.

Cont in this manner, inc 8 sts evenly around following alt rnds until there are 56 sts.

**Next 3 rnds:** Knit.

**Next rnd:** \*Inc 1 st in next st. K6. Rep from \* around. 64 sts.

Knit 2 rnds even.

Work Chart II to end of chart, noting 4-st rep will be worked 16 times.

With MC, knit 3 rnds.

**Divide for Earflaps: Next rnd:** Cast off 7 sts. K15 (including st on needle after cast off). Cast off 20 sts. K15 (including st on needle after cast off). Cast off rem 7 sts.

**First Earflap:** With RS facing, rejoin MC to 15 sts. Working back and forth across 2 needles in rows, work 4 rows stocking st.

**Next row:** (RS). K1. K2tog. Knit to last 3 sts. ssk. K1.

**Next row:** Purl.

Rep last 2 rows 4 times more. 5 sts rem.

**Next row:** K1. K3tog. K1.

**Next row:** P3.

**Next row:** K3tog. Fasten off.

**Second Earflap:** Work as for First Earflap.

## FINISHING

**Crochet Edging:** With RS facing and crochet hook, join B with sl st at center back. Ch 1. Work 1 rnd of sc evenly around lower edge of Hat and Earflaps working 3 sc in each point of Earflap. Join with sl st to first sc.

**Pom-poms:** (Make 2). Wind 2 strands of B around 3 fingers approx 40 times. Remove fingers and tie tightly in center. Trim to a smooth round shape. Sew to each point of Earflap.

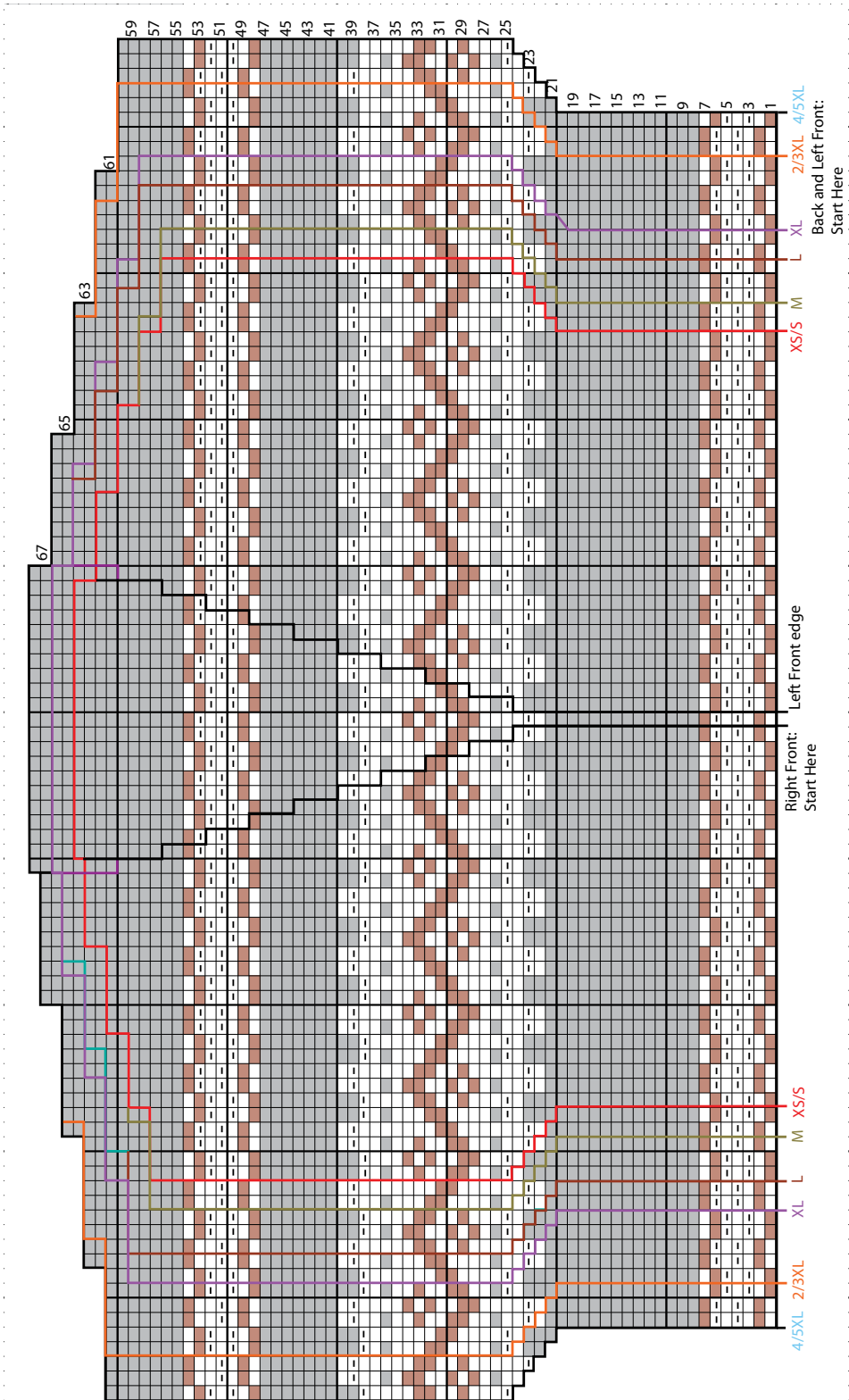
OR

**Braid Ties:** Cut 12 lengths of B 22 ins [56 cm] long. Taking 6 strands tog, fold in half and knot into fringe at point of Earflap. Divide these strands into 3 groups (4 strands each). Braid into tie approx 8 ins [20.5 cm] long. Secure ends tightly. Trim ends evenly.

Rep in rem Earflap.

**Pom-pom for top of Hat:** (Make 1). Wind 2 strands of B around 3 fingers approx 40 times. Remove fingers and tie tightly in center. Trim to a smooth round shape. Attach to top of Hat.

**Chart I  
VEST**



**Key**



**Chart II  
HAT**

