



 KNIT | SKILL LEVEL: INTERMEDIATE

ABBREVIATIONS:

Alt = Alternate(ing) stitch.	P = Purl
Beg = Begin(ning)	K = Knit
Cont = Continue(ity)	P2tog = Purl next 2 stitches together
Dec = Decrease(ing)	P2togbl = Purl next 2 stitches together thru back loop
Inc = Increase 1 stitch by knitting into front and back of next	Rep = Repeat
	RS = Right side
	St(s) = Stitch(es)
	WS = Wrong side

SIZES

To fit bust measurement

XS/S	28-34" [71-86.5 cm]
M	36-38" [91.5-96.5 cm]
L	40-42" [101.5-106.5 cm]
XL	44-46" [112-117 cm]
2/3 XL	48-54" [122-137 cm]
4/5 XL	56-62" [142-157.5 cm]

INSTRUCTIONS

The instructions are written for smallest size. If changes are necessary for larger sizes the instructions will be written thus (). When only one number is given, it applies to all sizes. For ease in working, circle all numbers pertaining to your size.

Finished bust

XS/S	37" [94 cm]
M	41" [104 cm]
L	44½" [113 cm]
XL	49½" [125.5 cm]
2/3 XL	58" [147.5 cm]
4/5 XL	66" [167.5 cm]

Note: When working from chart, carry yarn not in use loosely across WS, but never over more than 5 sts. When it must pass over more than 5 sts, weave it over and under color in use on next st or at center point of sts it passes over. The colors are never twisted around one another.

GAUGE

17 sts and 24 rows = 4" [10 cm] with larger needles in stocking st.

MATERIALS

Bernat® Satin™ (3.5 oz/100 g; 200 yds/182 m)

Sizes	XS/S	M	L	XL	2/3XL	4/5XL	
Main Color (MC) Mocha (04013)	5	5	5	6	6	6	balls
Contrast A Sea Shell (04420)	1	1	1	1	1	1	balls
Bernat® Super Value™ (7 oz/197 g; 426 yds/389 m)							
Main Color (MC) Walnut (07483)	2	3	3	3	3	3	balls
Contrast A Baby Pink (07438)	1	1	1	1	1	1	balls

Sizes U.S. 8 (5 mm) and U.S. 9 (5.5 mm) knitting needles **or size needed to obtain gauge.** 4 st holders.

BACK

With smaller needles and A, cast on **78 (86-94-106-122-142) sts Break A.

1st row: (RS). With MC, K2. *P2. K2. Rep from * to end of row.

2nd row: P2. *K2. P2. Rep from * to end of row. Rep last 2 rows for 1" [2.5 cm], ending with a 2nd row and **inc 1** (inc 1-inc1-dec 1-inc 1-dec 1) st at center of last row. **79** (87-95-105-123-141) sts.

Change to larger needles and proceed in stocking st until work from beg measures **7½** (7½-7½-8½-9½-10½)" [**19** (19-19-21.5-24-26.5) cm], ending with a purl row.

Work Chart I in stocking st, reading knit rows from right to left and purl rows from left to right.

Cont in Chart I until row 40 of chart has been completed.

Shape raglans: Keeping cont of Chart I, cast off **6** (8-9-11-16-18) sts beg of next 2 rows. **67** (71-77-83-91-105) sts. Cont in chart, noting raglan decs on 3rd and every following 4th row **4** (4-3-4-3-1)

time(s) more, then every following alt row **2** (2-4-2-4-8) times. **53** (57-61-69-75-85) sts.**

With MC, cont in stocking st, dec 1 st at each end of needle on every following alt row from previous dec to **31** (31-33-37-37-41) sts, ending with a WS row. Leave rem sts on a st holder.

FRONT

Work from ** to ** as given for Back. With MC, cont in stocking st, dec 1 st at each end of needle on every following alt row from previous dec to **51** (51-53-59-59-67) sts, ending with a purl row.

Shape neck: 1st row: Work 2tog. **K18** (18-18-19-19-19). Turn. Leave rem sts on a spare needle.

2nd row: Work 2tog. Purl to end of row.

3rd row: Work 2tog. Knit to last 2 sts. Work 2tog.

4th row: As 2nd row.

5th row: As 3rd row.

6th row: Purl.

Rep last 2 rows 4 times more. **5** (5-

5-6-6-6) sts. Dec 1 st at raglan edge only on next and every following alt row to 2 sts.

Next row: P2tog. Fasten off.

With RS of work facing, slip next **11** (11-13-17-17-25) sts onto a st holder. Join MC to rem sts and knit to last 2 sts. Work 2tog.

2nd row: Purl to last 2 sts.

Work 2tog.

3rd row: Work 2tog. Knit to last 2 sts. Work 2tog.

4th row: As 2nd row.

5th row: As 3rd row.

6th row: Purl. Rep last 2 rows 4 times more. **5** (5-5-6-6-6) sts.

Dec 1 st at raglan edge only on next and every following alt row to 2 sts.

Next row: P2togtbl. Fasten off.

SLEEVES

With smaller needles and A, cast on **42** (42-42-46-46-50) sts. Break A.

1st row: (RS). With MC, K2. *P2. K2. Rep from * to end of row.

2nd row: P2. *K2. P2. Rep from * to end of row. Rep last 2 rows for 5" [12.5 cm], ending with a 2nd row

and inc 1 st at center of last row. **43** (43-43-47-47-51) sts.

Change to larger needles and proceed in stocking st, inc 1 st each end of needle on next and every following **10th** (6th-6th-6th-4th-2nd) row to **51** (57-57-61-65-61) sts.

Size 4/5XL only: Inc 1 st each end of needle on following 4th row from previous inc to 71 sts.

All sizes: Work **7** (1-1-3-3-3) row(s) even. Work Chart II in stocking st, reading knit rows from right to left, purl rows from left to right and noting side incs on **3rd** (9th-5th-5th-1st-1st) row and every following **12th** (10th-6th-6th-4th-4th) row **2** (2-4-4-7-7) times more. **57** (63-67-71-81-87) sts. Cont in Chart II until row 40 of chart has been completed.

Shape raglans: Keeping cont of Chart II, cast off **6** (8-9-11-16-18) sts beg of next 2 rows. **45** (47-49-49-49-51) sts. Cont in chart, noting raglan decs on 3rd and every following 4th row **3** (4-4-5-

5-5) times more. **37** (37-39-37-37-39) sts.

Sizes XS/S, M, L only: Dec on every following alt row from previous dec **4** (2-2) times. **29** (33-35) sts.

Sizes XL, 2/3XL, 4/5XL only: With MC, cont in stocking st, dec 1 st at each end of needle on every following 4th row from previous dec (2-5-7) times more. (33-27-25) sts.

All sizes: With MC, cont in stocking st, dec 1 st at each end of needle on every following alt row from previous dec to **7** (7-7-9-9-9) sts, ending with a WS row. Leave rem sts on a st holder.

FINISHING

Pin garment pieces to measurements. Cover with a damp cloth, leaving cloth to dry.

Collar: Sew raglan seams, leaving back left raglan open. With RS of work facing, smaller needles and

MC, K7 (7-7-9-9-9) from left sleeve st holder. Pick up and knit **15** (15-15-17-17-19) sts down left front neck edge. K **11** (11-13-17-17-25) from front st holder. Pick up and knit **15** (15-15-17-17-19) sts up right front neck edge. K7 (7-7-9-9-9) from right sleeve st holder. K**31** (31-33-37-37-41) from back st holder. **86** (86-90-106-106-122) sts.

Beg with a 2nd row, work in (K2, P2) ribbing as given for Back for 3" [7.5 cm], ending with a WS row.

With A, work 1 row. Cast off in ribbing. Sew left back raglan and collar seam. Sew side and sleeve seams.

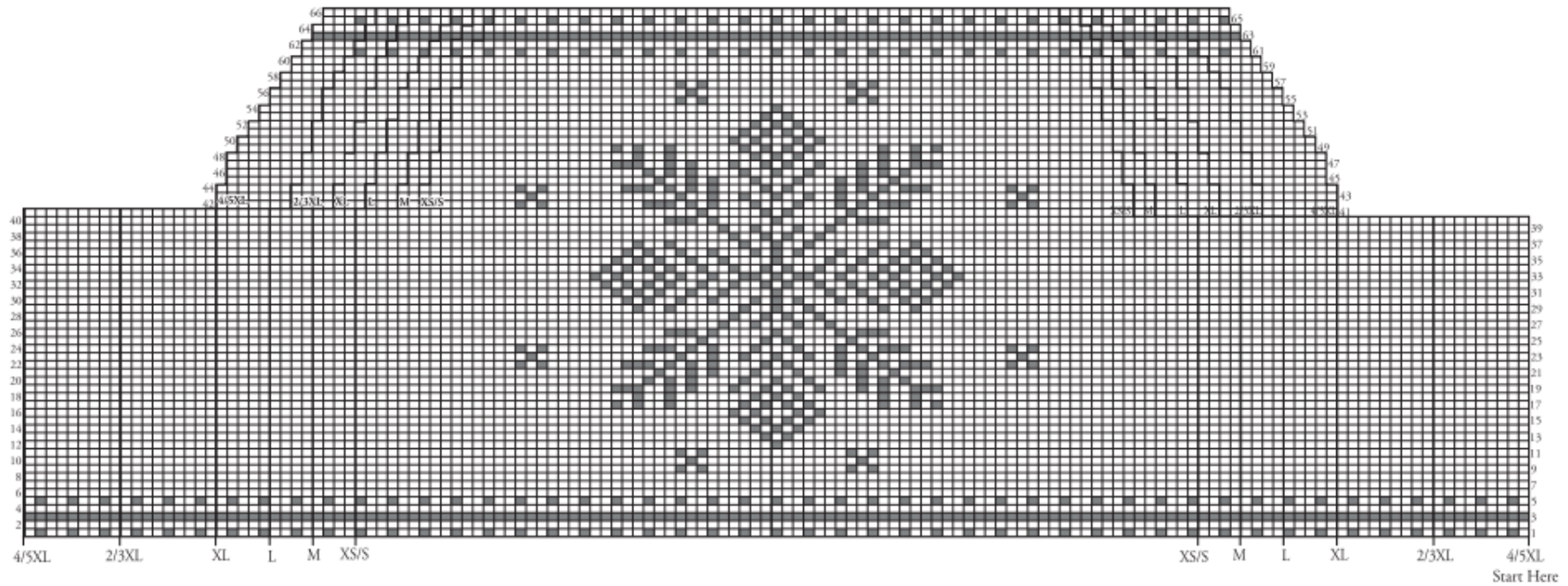


CHART I

KEY

- = MC
- = Contrast A

CHART II

KEY

- = MC
- = Contrast A

