

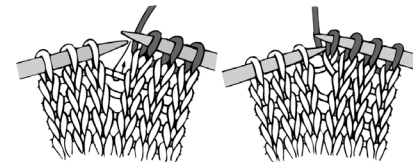


KNIT | SKILL LEVEL: **INTERMEDIATE**

ABBREVIATIONS

Beg = Beginning
C6B = Slip next 3 stitches onto cable needle and leave at back of work. K3, then K3 from cable needle.
C6F = Slip next 3 stitches onto cable needle and leave at front of work. K3, then K3 from cable needle.
Cont = Continue(ity)
K = Knit
K2tog = Knit next 2 stitches together
M1 = Make 1 stitch by picking up horizontal loop lying before next stitch and knitting into back of loop

P = Purl
P2tog = Purl next 2 stitches together
Pat = Pattern
Rem = Remaining
Rep = Repeat
Rnd(s) = Round(s)
RS = Right side
SI1P = Slip next stitch purlwise
Ssk = Slip next 2 stitches knitwise one at a time. Pass them back onto left-hand needle, then knit through back loops together
St(s) = Stitch(es)
Tog = Together
WS = Wrong side



MATERIALS

Bernat® Velvet™ (10.5 oz/300 g; 315 yds/288 m)

Main Color (MC) Clay Rose (32013) **1 ball**

Bernat® Sheepy™ (8.8 oz/250 g; 149 yds/136 m)

Contrast A Cotton Tail (43001) **1 ball**

Set of 4 size U.S. 7 [4.5 mm] double-pointed knitting needles **or size needed to obtain gauge.** Cable needle. Stitch marker. Yarn needle.

SIZES

To Fit Woman's shoe size:
5/6 (7/8-9/10).

Finished Foot length:

S 5/6 9" [23 cm]

M 7/8 9½" [24 cm]

L 9/10 10½" [26.5 cm]

GAUGE

16 sts and 22 rows = 4" [10 cm] in stocking st with Bernat® Velvet™.

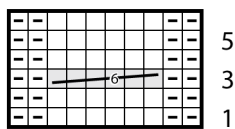
INSTRUCTIONS

The instructions are written for smallest size. If changes are necessary for larger size(s) the instructions will be written thus (.). Numbers for each size are shown in the same color throughout the pattern. When only one number is given in black, it applies to all sizes.

Cable Chart I (worked over 10 sts)

1st rnd: P2. K6. P2.
2nd rnd: As 1st rnd.
3rd rnd: P2. C6B. P2.
4th to 6th rnds: As 1st rnd.
 These 6 rnds form Cable Pat I.

Chart I



Start here

Key

□ = Knit
 □ = Purl

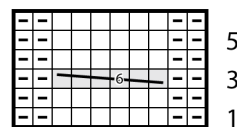
= C6B

= C6F

Cable Chart II (worked over 10 sts)

1st rnd: P2. K6. P2.
2nd rnd: As 1st rnd.
3rd rnd: P2. C6F. P2.
4th to 6th rnds: As 1st rnd.
 These 6 rnds form Cable Pat II.

Chart II



Start here

Key

□ = Knit
 □ = Purl

= C6B

= C6F

With A, cast on 30 sts loosely. Divide sts evenly onto 3 needles (10, 10, 10) and join in rnd, placing a marker on first st. Knit 4 rnds. Break A.

Join MC and proceed as follows:

Set-up rnd: *K5. M1. Rep from * around. 36 sts.

Beg working in Cable Pat, using Chart I for Right Sock and Chart II for Left Sock.

1st rnd: K4. Work 1st rnd of Cable Chart. Knit to end of rnd.
2nd rnd: K4. Work 2nd rnd of Cable Chart. Knit to end of rnd.
3rd rnd: K4. Work 3rd rnd of Cable Chart. Knit to end of rnd.
4th rnd: K4. Work 4th rnd of Cable Chart. Knit to end of rnd.
5th rnd: K4. Work 5th rnd of Cable Chart. Knit to end of rnd.
6th rnd: K4. Work 6th rnd of Cable Chart. Knit to end of rnd.
7th and 8th rnds: Rep 1st and 2nd rnds once more.
9th rnd: K4. Work 3rd rnd of Cable Chart. K4. Place all sts just worked onto 2 needles (9, 9).
 Rem 18 sts form Heel. Knit all 18 Heel sts onto one needle.

Make heel:

Work back and forth with 2 needles in rows across 18 Heel sts as follows:

1st row: (WS). Sl1P. Purl to end of row.
2nd row: Sl1P. Knit to end of row. Rep last 2 rows 7 (8-9) times more, then 1st row once.

Shape heel: 1st row: (RS). K11. ssk. K1. Turn. 17 sts.
2nd row: Sl1P. P5. P2tog. P1. Turn. 16 sts,
3rd row: Sl1P. K6. ssk. K1. Turn. 15 sts.
4th row: Sl1P. P7. P2tog. P1. Turn. 14 sts.
5th row: Sl1P. K8. ssk. K1. Turn. 13 sts.
6th row: Sl1P. P9. P2tog. P1. Turn.
7th row: Sl1P. Knit to end of row. 12 sts.

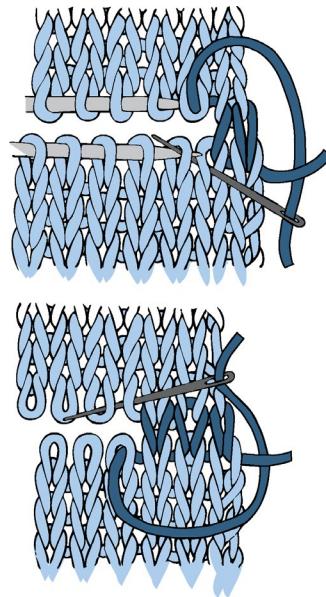
Shape gussets: With RS facing and 1st needle, pick up and knit 8 (9-10) sts along left side of heel. With 2nd needle, K4. Work 4th row of Cable Pat over next 10 sts. K4. With 3rd needle, pick up and knit 8 (9-10) sts along other side of Heel. K6 from Heel onto 3rd needle. Slip rem 6 sts from Heel onto beg of 1st needle. 46 (48-50) sts are now divided as follows: 14 (15-16) sts on 1st needle, 18 sts on 2nd needle and 14 (15-16) sts on 3rd needle.

Gusset Decreases: 1st rnd: 1st needle: Knit to last 3 sts. K2tog. K1. **2nd needle:** K4. Work appropriate rnd of Cable Pat. K4. **3rd needle:** K1. ssk. Knit to end of needle. **2nd rnd: 1st needle:** Knit. **2nd needle:** K4. Work appropriate rnd of Cable Pat. K4. **3rd needle:** Knit. Rep these 2 rnds to 36 sts divided as: 9 sts on 1st needle, 18 sts on 2nd needle and 9 sts on 3rd needle.

Keeping cont of Cable Pat, knit even in rnds until work from picked up rnd measures **4¾ (5¼-6¼)" [12 (13.5-16) cm]**.

Shape toe: 1st rnd: 1st needle: Knit to last 3 sts. K2tog. K1. **2nd needle:** K1. ssk. Knit to last 3 sts. K2tog. K1. **3rd needle:** K1. ssk. Knit to end of needle. **2nd rnd:** Knit. Rep last 2 rnds to 16 sts.

Knit sts of 1st needle onto end of 3rd needle. Break yarn, leaving an end 8" [20.5 cm] long. Graft 2 sets of 8 sts tog for toe.



GRAFTING

