



KNIT | SKILL LEVEL: EASY

ABBREVIATIONS

Alt = Alternate(ing)
Approx = Approximately
Beg = Beginning
Cont = Continue(ity)
K = Knit
K2tog = Knit next 2stitches together
P = Purl
Pat = Pattern
PM = Place marker
Rem = Remaining

Rep = Repeat
RS = Right side
Ssk = Slip next 2 stitches knitwise one at a time. Pass them back onto left-hand needle, then knit through back loops together
St(s) = Stitch(es)
Tog = Together
WS = Wrong side
Yo = Yarn over

SIZES

To fit chest measurement

XS/S/M/L

28-46" [71-117 cm]

XL/2/3/4/5XL

48-62" [122-157.5 cm]

Finished measurements (unfolded)

Approx **22½ (25½)" [57 (65) cm]** x **58" [147.5 cm]**

GAUGE

13 sts and 17 rows = 4" [10 cm] with larger needles in stocking st.

INSTRUCTIONS

The instructions are written for size **XS/S/M/L**. If changes are necessary for larger sizes the instructions will be written **XS/S/M/L (XL/2/3/4/5XL)**. Numbers for each size are shown in the same color throughout the pattern. When only one number is given in black, it applies to both sizes.

MATERIALS

Bernat® Maker™ (8.8 oz/250 g; 317 yds/290 m)

Sizes	XS/S/M/L	XL/2/3/4/5XL	
Lichen (06014)	2	2	balls
	317/290	370/336	yds/m

Sizes U.S. 10½ (6.5 mm) and U.S. 11 (8 mm) Susan Bates® knitting needles **or size needed to obtain gauge**. Susan Bates® stitch markers. Susan Bates® yarn needle.

SHRUG

Notes:

- Shrug is worked flat in one piece from cuff to cuff then seamed.
- When working Eyelet Pat, work (K1. P1) into each double yo.

With smaller needles, cast on **64 (80)** sts.

First Sleeve Cuff: Knit 5 rows, noting 1st row is WS.

Change to larger needles and proceed in Eyelet Pat (multiple of 4 sts + 8) as follows: (*See Chart on page 3*).

1st row: (RS). K4. *K2tog. (yo) twice. ssk. Rep from * to last 4 sts. K4.

2nd row: K4. Purl to last 4 sts, working (K1. P1) into each double yo. K4.

3rd row: K6. *K2tog. (yo) twice. ssk. Rep from * to last 6 sts. K6.

4th row: As 2nd row.

These 1st to 4th rows form Eyelet Pat.

Cont in Eyelet Pat having 4-st garter edges at each end of row as established, until work from beg measures approx 27" [68.5 cm], ending on a 4th row.

Divide for neck opening: 1st row:

(RS). K4. [K2tog. (yo) twice. ssk] **6 (8)** times. K4. **Turn.** Leave rem **32 (40)** sts on a spare needle for left side.

2nd row: K4. Purl to last 4 sts, working (K1. P1) into each double yo. K4.

3rd row: K6. *K2tog. (yo) twice. ssk. Rep from * to last 6 sts. K6.

4th row: As 2nd row.

Cont in Eyelet Pat across **32 (40)** having garter edges at each end of row as established, until work from dividing row measures 10" [25.5 cm], ending on a WS row. Break yarn, leaving long end approx 10" [25.5 cm]. Slip sts onto a st holder.

With RS facing, rejoin yarn to **32 (40)** sts on spare needle and proceed as follows:

1st row: (RS). K4. [K2tog. (yo) twice. ssk] **6 (8)** times. K4.

2nd row: K4. Purl to last 4 sts, working (K1. P1) into each double yo. K4.

Cont in Eyelet Pat having garter edges at each end of row as established, until work from dividing row measures 10" [25.5 cm], ending on a WS row. Break yarn. PM at end of last row.

Join front and back for second Sleeve as follows:

1st row: (RS). Pat across **32 (40)** sts. *Working across sts from st holder*, pat across **32 (40)** sts. **64 (80)** sts. PM (2nd set of markers) at each end of row.

Second Sleeve: Cont in pat as established, having garter edges at each end of row until work from 2nd set of markers measures same length as for first sleeve from Cuff to dividing row, ending on a WS row.

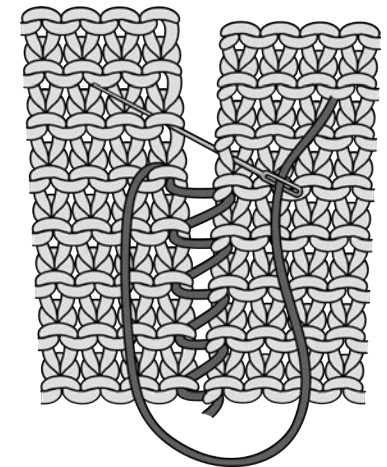
Change to smaller needles.

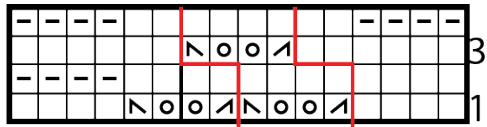
Second Sleeve Cuff: Knit 5 rows. Cast off knitwise (WS).

FINISHING

PM **18 (16)**" [**45.5 (40.5)** cm] in from side edges of cuffs. With WS tog, fold work in half lengthwise. Using Mattress st, sew sleeve seams from cuff to markers.

MATTRESS STITCH DIAGRAM





4-st rep Start Here

Key

- = Knit on RS rows. Purl on WS rows.
- ▣ = Knit on WS rows. Purl on RS rows.
- ⊠ = K2tog
- ⊞ = ssk
- ⊚ = yo

