



KNIT | SKILL LEVEL: INTERMEDIATE

ABBREVIATIONS

Alt = Alternate(ing)

Approx =
Approximately

Beg = Beginning

C4B = Slip next
2 stitches onto cable
needle and leave
at back of work. K2,
then K2 from cable
needle

C4F = Slip next
2 stitches onto cable
needle and leave
at front of work. K2,
then K2 from cable
needle

Cont = Continue(ity)

Dec = Decreasing

Inc = Increasing

K = Knit

P = Purl

Pat = Pattern

Rep = Repeat

RS = Right side

St(s) = Stitch(es)

Tog = Together

MEASUREMENTS

Approx 24" x 80" [71 x 203.5 cm]

GAUGE

12 sts and 18 rows = 4" [10 cm] in
stocking st.

Cable Panel (worked over 16 sts)

Note: See chart on page 2.

1st row: (RS). K4. C4B. K8.

2nd and alt rows: Purl.

3rd row: K2. (C4B) twice. K6.

5th row: (C4B) twice. K8.

7th row: K2. C4B. K10.

9th row: Knit.

11th row: K8. C4F. K4.

13th row: K6. (C4F) twice. K2.

15th row: K8. (C4F) twice.

17th row: K10. C4F. K2.

19th row: Knit.

20th row: Purl.

These 20 rows form Cable Panel.

INSTRUCTIONS

Cast on 83 sts.

1st row: (RS). *K1. P1. Rep from *
to last st. K1.

2nd row: *P1. K1. Rep from * to
last st. P1.

Rep last 2 rows of (K1. P1) ribbing
once more, inc 1 st at center of last
row. 84 sts.

MATERIALS

Bernat® Plentiful™ (10.6 oz/300 g; 952 yds/871 m)

Linen (19015)

1 ball

Size U.S. 10½ (6.5 mm) knitting needles **or size needed to obtain
gauge.** Cable needle.

Proceed in Cable Pat as follows:

1st row: (RS). K1. P1. *Work 1st row of Cable Panel. Rep from * to last 2 sts. P1. K1.

2nd row: K1. P1. *Work 2nd row of Cable Panel. Rep from * to last 2 sts. P1. K1.

3rd row: K1. P1. *Work 3rd row of Cable Panel. Rep from * to last 2 sts. P1. K1.

4th row: K1. P1. *Work 4th row of Cable Panel. Rep from * to last 2 sts. P1. K1.

Cable Panel is now in position.

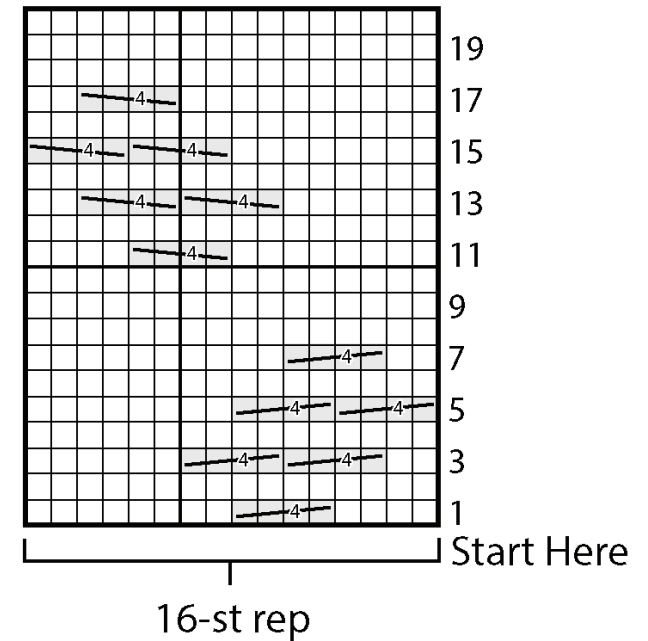
Last 2 rows form Seed St Pat at each side of Scarf over 2 sts.

Cont in pat, keeping cont of Cable Panel Pat until work from beg measures approx 79" [201 cm], ending on 8th or 18th row of Cable Panel Pat and dec 1 st at center of last row. 83 sts.

Work 4 rows in (K1. P1) ribbing, as given above. Cast off in rib.



Cable Panel



Key

□ = Knit on RS rows.
 □ = Purl on WS rows.

 = C4B

 = C4F