



KNIT | SKILL LEVEL: **INTERMEDIATE**

## ABBREVIATIONS

**Beg** = Beginning

**C8(12-16-20)B** = Slip next 4(6-8-10) stitches onto cable needle and leave at back of work. K4(6-8-10), then K4(6-8-10) from cable needle.

**C8(12-16-20)F** = Slip next 4(6-8-10) stitches onto cable needle and leave at front of work. K4(6-8-10), then K4(6-8-10) from cable needle.

**Dec** = Decrease(ing)

**Inc** = Increase(ing)

**K** = Knit

**M1P** = Make 1 stitch by picking up horizontal loop lying before next stitch and purling into back of loop

**P** = Purl

**Pat** = Pattern

**P2tog** = Purl next 2 stitches together

**P2togtbl** = Purl next 2 stitches together through back loops

**PM** = Place marker

**Rep** = Repeat

**Rnd(s)** = Round(s)

**RS** = Right side

**St(s)** = Stitch(es)

**WS** = Wrong side

## MATERIALS

**Bernat® Satin™** (3.5 oz/100g; 200 yds/182 m)

Sizes	XS/S/M	L/XL	2/3/4/5XL	
Ebony (04040)	3	5	7	balls

Sizes U.S. 7 (4.5 mm) and U.S. 8 (5 mm) Susan Bates® knitting needles. Size U.S. 8 (5 mm) Susan Bates® circular knitting needle 36" [90 cm] long **or size needed to obtain gauge**. 4 Susan Bates® stitch markers. Susan Bates® cable needle.

## SIZES

**To fit bust measurement**

**XS/S/M** 28-38" [71-96.5 cm]

**L/XL** 40-46" [101.5-117cm]

**2/3/4/5XL** 48-62" [122-157.5 cm]

## GAUGE

18 sts and 24 rows = 4" [10 cm] with larger needles in stocking st.

## INSTRUCTIONS

**Note:** Shoulderette is worked in one piece from cuff to cuff.

**Cable Panel 1** (worked over 40 sts). (See Chart 1 on page 3).

**1st and 3rd rows:** (RS). P12. K16. P12.

**2nd and 4th rows:** K12. P16. K12.

**5th row:** P12. C8B. C8F. P12.

**6th row:** K12. P16. K12.

**7th row:** P10. K20. P10.  
**8th row:** K10. P20. K10.  
**9th row:** P9. K22. P9.  
**10th row:** K9. P22. K9.  
**11th row:** P8. K24. P8.  
**12th row:** K8. P24. K8.  
**13th row:** P8. C12B. C12F. P8.  
**14th row:** K8. P24. K8.  
**15th row:** P7. K26. P7.  
**16th row:** K7. P26. K7.  
**17th row:** P6. K28. P6.  
**18th row:** K6. P28. K6.  
**19th row:** P5. K30. P5.  
**20th row:** K5. P30. K5.  
**21st row:** P4. K32. P4. 2  
**2nd row:** K4. P32. K4. 2  
**3rd row:** P4. C16B. C16F. P4.  
**24th row:** K4. P32. K4.  
**25th row:** P3. K34. P3.  
**26th row:** K3. P34. K3.  
**27th row:** P2. K36. P2.  
**28th row:** K2. P36. K2.  
**29th row:** P1. K38. P1.  
**30th row:** K1. P38. K1.  
**31st and 33rd rows:** Knit.  
**32nd, 34th, 36th, 38th, 40th, 42nd, 44th and 46th rows:** Purl.  
**35th row:** C20B. C20F.  
**37th, 39th, 41st, 43rd, 45th and 47th rows:** Knit.  
**48th row:** Purl.  
 These 48 rows form Cable Panel 1.

**Cable Panel 2** (worked over 40 sts).  
*(See Chart II on page 3).*  
**1st and 3rd rows:** (RS). Knit.  
**2nd and 4th rows:** Purl.  
**5th row:** C20B. C20F.  
**6th, 8th, 10th and 12th rows:** Purl.  
**7th, 9th and 11th rows:** Knit.  
**13th row:** P1. K38. P1.  
**14th row:** K1. P38. K1.  
**15th row:** P2. K36. P2.  
**16th row:** K2. P36. K2.  
**17th row:** P3. K34. P3.  
**18th row:** K3. P34. K3.  
**19th row:** P4. C16B. C16F. P4.  
**20th and 22nd rows:** K4. P32. K4.  
**21st row:** P4. K32. P4.  
**23rd row:** P5. K30. P5.  
**24th row:** K5. P30. K5.  
**25th row:** P6. K28. P6.  
**26th row:** K6. P28. K6.  
**27th row:** P7. K26. P7.  
**28th row:** K7. P26. K7.  
**29th row:** P8. K24. P8.  
**30th row:** K8. P24. K8.  
**31st row:** P8. C12B. C12F. P8.  
**32nd row:** K8. P24. K8.  
**33rd row:** P9. K22. P9.  
**34th row:** K9. P22. K9.  
**35th row:** P10. K20. P10.  
**36th row:** K10. P20. K10.  
**37th row:** P12. K16. P12.  
**38th row:** K12. P16. K12.  
**39th row:** P12. C8B. C8F. P12.

**40th row:** K12. P16. K12.  
**41st row:** P12. K16. P12.  
**42nd row:** As 40th row.  
 These 42 rows form Cable Panel 2.

With pair of smaller needles, cast on **42 (46-50)** sts.  
**1st row:** (RS). K1. \*P2. K2. Rep from \* to last st. K1.  
 Rep last row (K2. P2) ribbing until work from beg measures 2" [5 cm], ending on a WS row.

Change to larger needles and proceed as follows:  
**1st row:** (RS). P1. M1P. **P0 (2-4)**. PM.  
 Work 1st row of Cable Panel 1. PM. **P0 (2-4)**. M1P. P1. **44 (48-52)** sts.  
**2nd row:** Knit to marker. Slip marker. Work 2nd row of Cable Panel 1. Slip marker. Knit to end of row.  
**3rd row:** Purl to marker. Slip marker. Work 3rd row of Cable Panel 1. Slip marker. Purl to end of row.  
**4th row:** Knit to marker. Slip marker. Work 4th row of Cable Panel 1. Slip marker. Knit to end of row.  
 Cable Panel 1 is now in position.

Cont in pat as established until 48 rows of Cable Panel 1 are complete, AT THE SAME TIME, inc 1 st at each end of next and every 4th row to **62 (68-72)** sts.

Cont even in pat, rep 31st to 48th rows of Cable Panel 1 until work from beg measures approx **39½ (46-53)" [100.5 (117-134.5) cm]**, ending on a 48th row.

Proceed as follows:  
**1st row:** (RS). P1. Purl to marker. Work 1st row of Cable Panel 2. Slip marker. Purl to last st. P1.  
**2nd row:** Knit to marker. Slip marker. Work 2nd row of Cable Panel 2. Slip marker. Knit to end of row.  
**3rd row:** Purl to marker. Slip marker. Work 3rd row of Cable Panel 2. Slip marker. Purl to end of row.  
**4th row:** Knit to marker. Slip marker. Work 4th row of Cable Panel 2. Slip marker. Knit to end of row.

Keeping cont of Cable Panel 2, at the same time, dec 1 st at each end of next and every following 4th row to **42 (46-50)** sts, ending after a WS row.

Change to pair of smaller needles.  
**Next row:** (RS). K1. \*P2. K2. Rep from \* to last st. K1.  
 Rep last row (K2. P2) ribbing until cuff measures 2" [5 cm], ending on a WS row. Cast off loosely in ribbing.

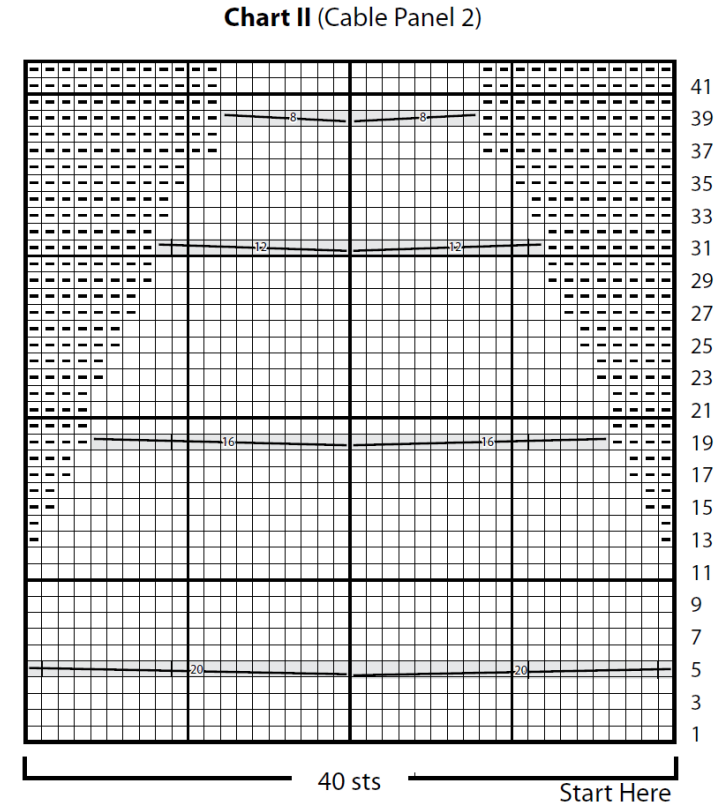
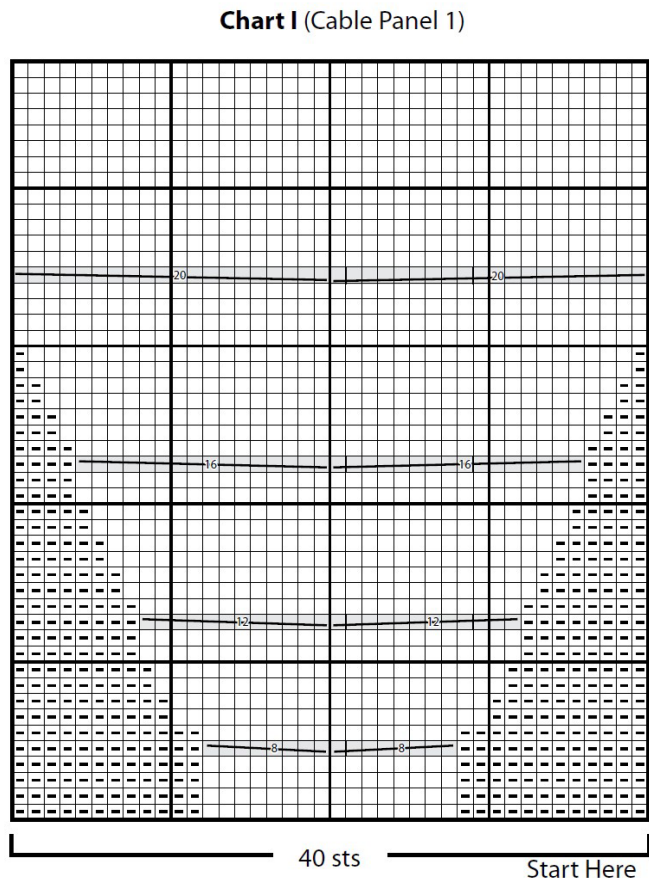
### FINISHING

PM at side edges **14 (14½-15)"** [35.5 (37-38) cm] from cast on and cast off edges. Sew seams from cuff to marker to form sleeves.

### Edging

With RS facing, circular needle and beg at underarm seam, pick up and knit **148 (180-212)** sts evenly around entire edge of Shoulderette. Join in rnd, PM at first st.

**Next rnd:** \*K2. P2. Rep from \* around. Rep last rnd (K2. P2) ribbing until edging measures 2" [5 cm]. Cast off loosely in ribbing.



### Key

- ☐ = Knit on RS rows, Purl on WS rows
- ◻ = Purl on RS rows, Knit on WS rows
- = C8B
- = C8F
- = C12B
- = C12F
- = C16B
- = C16F
- = C20B
- = C20F

