



MATERIALS

Bernat® Satin™ (100 g/3.5 oz; 182 m/200 yds)
Crimson (04705) **2 balls**

Size U.S. 8 (5 mm) knitting needles **or size needed to obtain gauge.**

 **KNIT | SKILL LEVEL: EASY**

ABBREVIATIONS

Approx =	K = Knit	Rep = Repeat
Approximately	P = Purl	RS = Right side
Cont = Continue(ity)	Pat = Pattern	St(s) = Stitch(es)

MEASUREMENTS

Approx 6 x 60" [15 x 152.5 cm].

GAUGE

18 sts and 24 rows = 4" [10 cm] in stocking st.

INSTRUCTIONS

Cast on 31 sts.

1st row: (RS). *K1. P1. Rep from * to last st. K1.

Rep last row of Seed St Pat 5 times more.

****Next row:** (RS). (K1. P1) twice. Knit to last 4 sts. (P1. K1) twice.

Next row: (K1. P1) twice. K1. Purl to last 5 sts. (K1. P1) twice. K1.

Rep last 2 rows 12 times more.***

Place Chart I: 1st row: (RS). (K1. P1) twice. K2. Work 1st row of Chart I. K1. (P1. K1) twice.

2nd row: (K1. P1) twice. K1. Work 2nd row of Chart I. (P1. K1) 3 times. Chart I is now in position. Chart I is shown on page 2.

Cont working until 22 rows of Chart I have been completed.**

Rep from ** to ** as given above 3 times more, then from ** to *** once.

******Place Chart II: 1st row:** (RS). (K1. P1) twice. K2. Work 1st row of Chart II. K1. (P1. K1) twice.

2nd row: (K1. P1) twice. K1. Work 2nd row of Chart II. (P1. K1) 3 times. Chart II is now in position.

Cont working until 22 rows of Chart II have been completed.

Next row: (RS). (K1. P1) twice. Knit to last 4 sts. (P1. K1) twice.

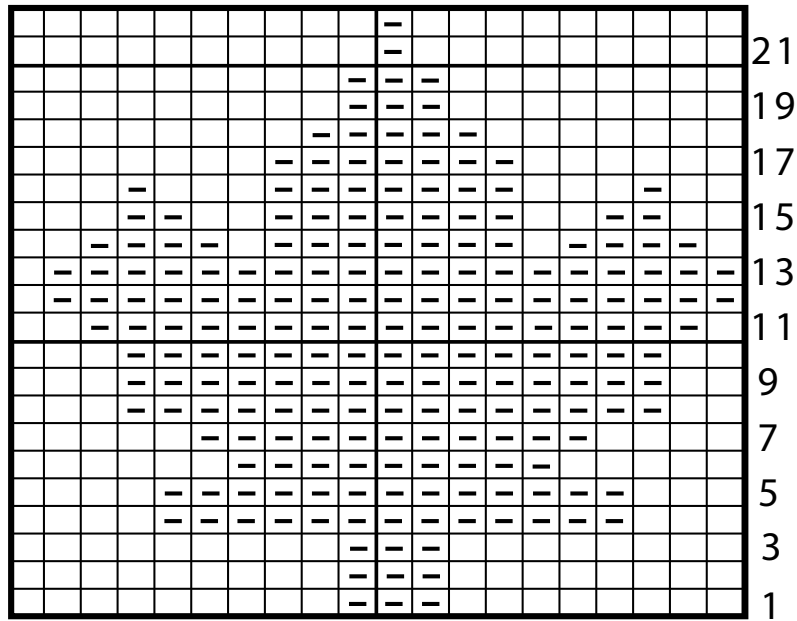
Next row: (K1. P1) twice. K1. Purl to last 5 sts. (K1. P1) twice. K1.

Rep last 2 rows 12 times more.****

Rep from **** to **** as given above 3 times more.

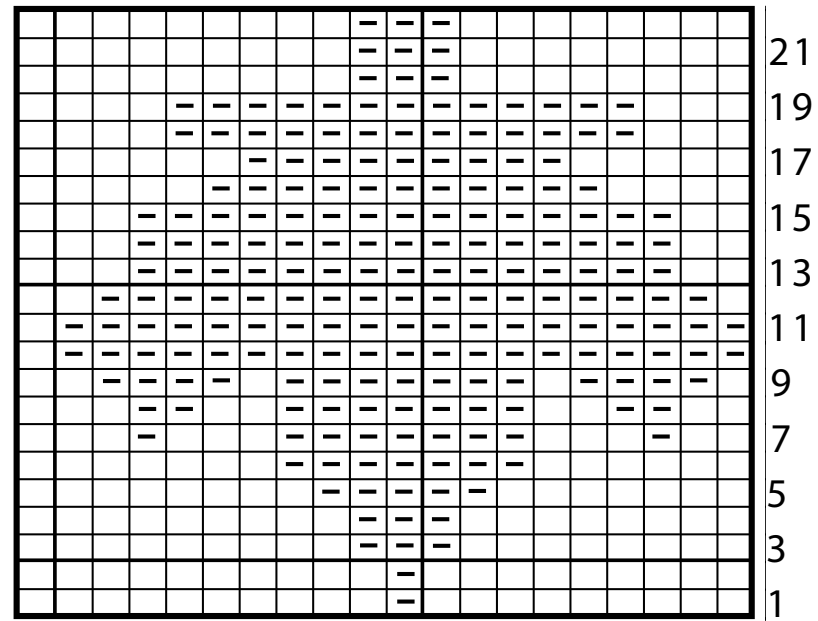
Work 6 rows in Seed St Pat. Cast off in pat.

Chart I



Start here

Chart II



Start here

Key

- = Knit on RS rows.
Purl on WS rows.
- = Purl on RS rows.
Knit on WS rows.