

BERNAT® SNOWDRIFT CABLE SCARF | KNIT



 KNIT | SKILL LEVEL: INTERMEDIATE

MEASUREMENTS

Approx 8" x 60" [20.5 x 152.5 cm].

GAUGE

10 sts and 14 rows = 4" [10 cm] in stocking st.

MATERIALS

Bernat® Roving™ (3.5 oz/100 g; 120 yds/109 m)
Pumpkin (00630) **3 balls**

Bernat® Faux Fur Pom-pom™ Brown Muskrat (01013) **2**

Size U.S. 11 (8 mm) knitting needles **or size needed to obtain gauge.** Cable needle.

ABBREVIATIONS:

Alt = Alternate(ing)

Beg = Beginning

C8B = Slip next 4 stitches onto cable needle and leave at back of work. K4, then K4 from cable needle

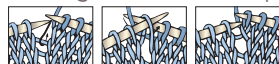
C8F = Slip next 4 stitches onto cable needle and leave at front of work. K4, then K4 from cable needle

Cont = Continue(ity)

K = Knit

K2tog = Knit next 2 stitches together

M1 = Make 1 stitch by picking up horizontal loop lying before next stitch and knitting into back of loop



Pat = Pattern

Purl = Purl

Rem = Remaining

Rep = Repeat

RS = Right side

St(s) = Stitch(es)

WS = Wrong side

INSTRUCTIONS

Cast on 16 sts.

Knit 2 rows (garter st), noting first row is WS.

Next row: (WS). K1. *M1. K2. Rep from * to last st. M1. K1. 24 sts.

Proceed in Cable Pat as follows:

See Chart.

1st row: (RS). Knit.

2nd and alt rows: Purl.

3rd row: (C8F. K4) twice.

5th and 7th rows: Knit.

9th row: (K4. C8B) twice.

11th row: Knit.

12th row: Purl.

These 12 rows form Cable Pat.

Cont in Cable Pat as established until work from beg measures approx 60" [152.5 cm], ending with an 11th row of pat.

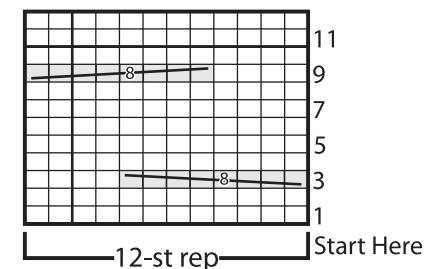
Next row: (WS). K1. *K1. K2tog. Rep from *to last 2 sts. K2. 17 sts.

Knit 1 row.

Cast off.

Finishing: Sew Pompoms to both ends of Scarf.

Chart



Key

= Knit on RS rows.
Purl on WS rows.

 = C8B

 = C8F