



SIZE

One size to fit average woman's head.

MATERIALS

Bernat® Softee® Chunky™
(100 g/3.5 oz; 99 m/108 yds)



Glowing Gold (28607) 2 balls

Size 8 mm (U.S. 11) circular knitting needle
16" [40 cm] long. Set of four size 8 mm
(U.S. 11) double-pointed knitting needles
or size needed to obtain gauge. Cable
needle. Stitch marker.

GAUGE

11 sts and 14 rows = 4" [10 cm] in stocking
stitch.

ABBREVIATIONS

www.bernat.com/abbreviations

Approx = Approximate(ly)

Beg = Begin(ing)

C4B = Slip next 2 stitches onto cable needle and leave at back of work. K2, then K2 from cable needle.

C4F = Slip next 2 stitches onto cable needle and leave at front of work. K2, then K2 from cable needle.

K = Knit

K2tog = Knit next 2 stitches together

M1 = Make 1 stitch by picking up horizontal loop lying before next stitch and purling into back of loop.



P = Purl

Pat = Pattern

P2tog = Purl next 2 stitches together

RS = Right side

Rem = Remaining

Rep = Repeat

Rnd(s) = Round(s)

St(s) = Stitch(es)

WS = Wrong side

INSTRUCTIONS

Cable Pat A (worked over 4 sts). (See Chart on page 2).

1st row: K4.

2nd row: K4.

3rd row: C4B.

4th row: K4.

These 4 rows form Cable Pat A.

Cable Pat B (worked over 4 sts). (See Chart on page 2).

1st row: K4.

2nd rnd: K4.

3rd row: C4F.

4th row: K4.

These 4 rows form Cable Pat B.

Ear Flaps: (make 2). (See Panel Pat C Chart on page 2).

Cast on 5 sts.

1st row: (RS). K1. M1. P1. K1. P1. M1. K1. 7 sts.

2nd row: P3. K1. P3.

3rd row: K2. M1. P1. K1. P1. M1. K2. 9 sts.

4th row: P4. K1. P4.

5th row: K3. M1. P1. K1. P1. M1. K3. 11 sts.

6th row: P5. K1. P5.

7th row: C4B. P1. K1. P1. C4F.

8th row: As 6th row.

9th row: K4. P1. K1. P1. K4.

10th row: As 6th row.

11th row to 18th row: Rep 7th to 10th rows twice more.

19th row: C4B. M1. P1. K1. P1. M1. C4F. 13 sts.

20th row: P4. (K1. P1) twice. K1. P4. Break yarn.

Body of Hat: 1st rnd: (Joining rnd). With circular needle, cast on 5 sts. Work across 1st Earflap as follows: Work 1st row Cable Pat A. (K1. P1) twice. K1. Work 1st row Cable Pat B. **Turn.** Cast on 23 sts. Work across 2nd Earflap as follows: Work 1st row Cable Pat A. (K1. P1) twice. K1. Work 1st row Cable Pat B. **Turn.** Cast on 9 sts. Join in rnd. Place marker on first st. 63 sts.

2nd rnd: *(P1. K1) twice. P1. Work 2nd row Cable Pat A.** (P1. K1) twice. P1. Work 2nd row Cable Pat B. Rep from * twice more, then from * to ** once.

3rd rnd: *(K1. P1) twice. K1. Work 3rd row Cable Pat A.** (K1. P1) twice. K1. Work 3rd row Cable Pat B. Rep from * twice more, then from * to ** once.

4th rnd: *(P1. K1) twice. P1. Work 4th row Cable Pat A.** (P1. K1) twice. P1. Work 4th row Cable Pat B. Rep from * twice more, then from * to ** once.

Last 2 rows form Seed St Pat. Cable Pats A and B are now in position.

Cont in pat, until work from joining rnd measures approx 5" [12 cm], ending on a 1st row of Cable Pat A or B.

Note: Change to double-pointed needles when needed.

Shape top: 1st rnd: *K2tog. Seed st across next 3 sts. Work 2nd row Cable Pat A.** K2tog. Seed st across next 3 sts. Work 2nd row Cable Pat B. Rep from * twice more, then from * to ** once. 56 sts.

2nd rnd: *Seed st across next 4 sts. Work 3rd row Cable Pat A.** Seed st across next 4 sts. Work 3rd row Cable Pat B. Rep from * twice more, then from * to ** once.



3rd rnd: *P2tog. K1. P1. Work 4th row Cable Pat A.** P2tog. K1. P1. Work 4th row Cable Pat B. Rep from * twice more, then from * to ** once. 49 sts.

4th rnd: *Seed st across next 3 sts. Work 1st row Cable Pat A.** Seed st across next 3 sts. Work 1st row Cable Pat B. Rep from * twice more, then from * to ** once.

5th rnd: *K2tog. P1. Work 2nd row Cable Pat A.** K2tog. P1. Work 2nd row Cable Pat B. Rep from * twice more, then from * to ** once. 42 sts.

6th rnd: *P1. K1. Work 3rd row Cable Pat A.** P1. K1. Work 3rd row Cable Pat B. Rep from * twice more, then from * to ** once.

7th rnd: *P2tog. Work 4th row Cable Pat A.** P2tog. Work 4th row Cable Pat B. Rep from * twice more, then from * to ** once. 35 sts.

8th rnd: *P1. Work 1st row Cable Pat A.** P1. Work 1st row Cable Pat B. Rep from * twice more, then from * to ** once.

9th rnd: *K2tog. K3. Rep from * around. 28 sts.

10th rnd: Knit.

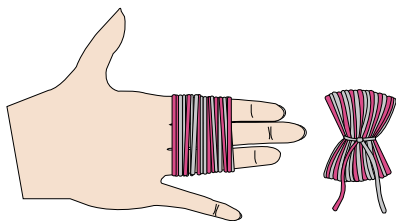
11th rnd: *K2tog. K2. Rep from * around. 21 sts.

12th rnd: Knit.

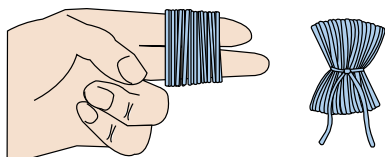
13th rnd: (K2tog) 10 times. K1. 11 sts.

Break yarn leaving a long end. Draw end tightly through rem sts and fasten securely.

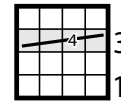
Large Pompom (make 1): Wind yarn around 3 fingers approx 60 times. Remove from fingers and tie tightly in center. Cut through each side of loops. Trim to a smooth round shape. Sew securely to top of Hat.



Small Pompoms (make 2): Wind yarn around 2 fingers approx 40 times. Remove from fingers and tie tightly in center. Cut through each side of loops. Trim to a smooth round shape. Sew securely to bottom of ear flaps.

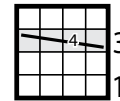


PANEL PAT A



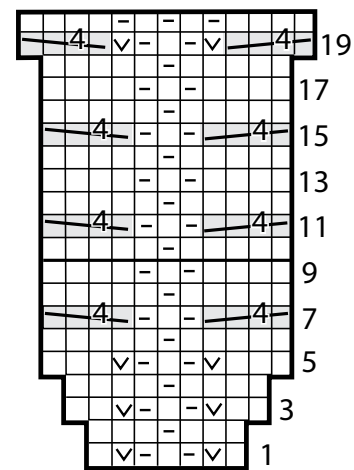
Start Here

PANEL PAT B



Start Here

PANEL PAT C



Start Here

KEY

☐ = Knit on RS rows. Purl on WS rows.

◻ = Purl on RS rows. Knit on WS rows.

☑ = M1

= C4B

= C4F