



KNIT | SKILL LEVEL: **INTERMEDIATE**

ABBREVIATIONS

- Alt** = Alternate(ing)
- Beg** = Beginning
- Ch** = Chain(s)
- Cont** = Continue(ity)
- Dec** = Decreasing
- Inc** = Increasing
- K** = Knit
- K2(3)tog** = Knit next 2(3) stitches together
- P** = Purl
- Pat** = Pattern

- Rem** = Remaining
- Rep** = Repeat
- Rnd(s)** = Round(s)
- RS** = Right side
- Sc** = Single crochet
- Sl1** = Slip next stitch knitwise
- Sl st** = Slip stitch
- St(s)** = Stitch(es)
- Tog** = Together
- WS** = Wrong side

MATERIALS

Bernat Roving (100 g/3.5 oz; 109 m/120 yds)

HAT

- Main Color (MC)** Flint (00033) **1 ball**
- Contrast A** Rice Paper (00100) **1 ball**
- Contrast B** Bark (00011) **1 ball**

Set of four size U.S. 11 (8 mm) double- pointed knitting needles **or size needed to obtain gauge.** Size U.S. J/10 (6 mm) crochet hook. Stitch marker. Yarn needle.

PULLOVER

Sizes	XS/S	M	L	XL	2/3XL	4/5XL	
Main Color (MC) Flint (00033)	4	5	6	6	7	7	balls
Contrast A Rice Paper (00100)	2	2	2	3	3	3	balls
Contrast B Bark (00011)	2	2	3	3	3	3	balls

Sizes U.S. 10½ (6.5 mm) and U.S. 11 (8 mm) knitting needles **or size needed to obtain gauge.** Small quantity of Bernat® Softee Chunky (39040 Black) for embroidery on Back. Stitch markers. Yarn needle.

SIZES

To fit chest measurement

- XS/S** 28-34" [71-86.5 cm]
- M** 36-38" [91.5-96.5 cm]
- L** 40-42" [101.5-106.5 cm]
- XL** 44-46" [112-117 cm]
- 2/3XL** 48-54" [122-137 cm]
- 4/5XL** 56-62" [142-157.5 cm]

Finished chest

- XS/S** 40" [101.5 cm]
- M** 44" [112 cm]
- L** 48" [122 cm]
- XL** 50" [127 cm]
- 2/3XL** 58" [147.5 cm]
- 4/5XL** 64" [162.5 cm]

Hat: One size to fit average adult.

GAUGE

11 sts and 15 rows = 4" [10 cm] with larger needles in stocking st.

INSTRUCTIONS

The instructions are written for smallest size. If changes are necessary for larger sizes the instructions will be written thus (). Numbers for each size are shown in the same color throughout the pattern. When only one number is given in black, it applies to all sizes.

PULLOVER

BACK

With smaller needles and B, cast on **57 (61-67-69-79-89) sts.

1st row: (RS). K1. *P1. K1. Rep from * to end of row.

2nd row: P1. *K1. P1. Rep from * to end of row.

Rep last 2 rows rows of (K1. P1) ribbing for 3" [7.5 cm], ending with a 2nd row.**

Change to larger needles.

Work Chart I in stocking st until row 52 of chart is complete, *reading knit rows from right to left and purl rows from left to right.*

See Chart on page 5.

Armhole shaping: Keeping cont of Chart I, cast off **3 (3-3-4-5-7)** sts beg next 2 rows. **51 (55-61-61-69-75)** sts.

Dec 1 st each end of needle on next **3 (3-5-5-7-7)** rows. **45 (49-51-51-55-61)** sts.

Cont working chart to end of chart. Cast off.

Note: 'Knit or Die' will be embroidered with black yarn.

See Diagram on page 4.

FRONT

Work from ** to ** as given for Back. Change to larger needles.

Work Chart II in stocking st until row 52 of chart is complete, *reading knit rows from right to left and purl rows from left to right.*

See Chart on page 6.

Armhole shaping: Keeping cont of Chart II, cast off **3 (3-3-4-5-7)** sts beg next 2 rows. **51 (55-61-61-69-75)** sts.

Dec 1 st each end of needle on next **3 (3-5-5-7-7)** rows. **45 (49-51-51-55-61)** sts.

Cont working chart to until row 62 of chart is complete.

Neck shaping: Next row: (RS). Pat across **20 (22-23-23-25-28)** sts. Cast off center 5 sts. Work chart to end of row.

Working both sides at same time, dec 1 st at neck edge on next 3 rows, then on following alt rows **3 (3-3-3-4-4)** times. **14 (16-17-17-18-20)** sts rem.

Cont working chart to end of chart. Cast off.

SLEEVES

With smaller needles and B, cast on **29 (29-31-31-33-33)** sts.

Work 3" [7.5 cm] in (K1. P1) ribbing as given for Back, ending with a 2nd row.

Change to larger needles and work Chart III in stocking st to end of chart, *reading knit rows from right to left and purl rows from left to right* and inc 1 st each end of needle on 7th and every following 8th row twice more. **35 (35-37-37-39-39)** sts. See Chart on page 7.

With MC cont inc on following **8th (6th-8th-8th-6th-6th)** rows until there are **45 (47-49-49-51-51)** sts. Cont even until Sleeve from beg measures **18 (18-17½-17½-17-17)" [45.5 (45.5-44.5-44.5-43-43) cm]** ending with a purl row.

Shape top: Cast off 2 sts beg next **14 (14-14-14-16-16)** rows. Cast off rem **17 (19-21-21-19-19)** sts.

FINISHING

Embroider Back 'Knit or Die' slogan as shown with outline st using Bernat® Softee Chunky yarn.

Sew shoulder seams. Sew in sleeves. Sew side and sleeve seams.

Collar: With smaller needles and MC, cast on 3 sts.

1st row: (RS). Sl1. (Inc 1 st in next st) twice. 5 sts.

2nd row: Knit.

3rd row: Sl1. Inc 1 st in next st. Knit to last 2 sts. Inc 1 st in next st. K1.

4th row: Knit to last st. P1. Change to B and rep 3rd and 4th rows 5 times more. 17 sts.

1st row: Sl1. Knit to end of row.

2nd row: Knit to last st. P1.

3rd row: Sl1. Inc 1 st in next st. Knit to last 2 sts. Inc 1 st in next st. K1.

4th row: As 2nd row.

Rep last 4 rows twice more. 23 sts. Place marker at each end of needle. Break B.

1st row: With MC, Sl1. Knit to end of row.

2nd row: Knit to last st. P1.

Rep last 2 rows until Collar from markers measures **14½ (14½-15-15-15½-15½)** ins [**37 (37-38-38-39.5-39.5) cm**], ending with a WS row.

1st row: With B, Sl1. K2tog. Knit to last 2 sts. K2tog.

2nd row: Knit to last st. P1.

3rd row: Sl1. Knit to end of row.

4th row: As 2nd row.

Rep last 4 rows twice more. 17 sts.

1st row: Sl1. K2tog. Knit to last 2 sts. K2tog.

2nd row: Knit to last st. P1.

Rep last 2 rows 4 times more. 7 sts rem.

Change to MC and rep last 2 rows twice more. 3 sts rem. Cast off.

Sew Collar to neck edge, having cast on and cast off edges meet at center front.

HAT

Beg at top, with set of four double-pointed needles and MC, cast on 4 sts.

1st rnd: (Inc 1 st in next s) 4 times. 8 sts. Divide sts evenly onto 3 needles (3, 3, 2). Join in rnd placing a marker on first st.

2nd and alt rnds: Knit.

3rd rnd: *Inc 1 st in next st. Rep from * around. 16 sts.

5th rnd: *Inc 1 st in next st. K1. Rep from * around. 24 sts.

7th rnd: *Inc 1 st in next st. K2. Rep from * around. 32 sts.

9th rnd: *Inc 1 st in next st. K3. Rep from * around. 40 sts.

Cont in this manner, inc 8 sts evenly around following alt rnds until there are 56 sts.

Next 3 rnds: Knit.

Next rnd: *Inc 1 st in next st. K13. Rep from * around. 60 sts.

Work Chart IV to end of chart, noting 12-st rep will be worked 5 times.

See Chart on page 7.

With MC, knit 3 rnds.

Divide for Earflaps: Next rnd: Cast off 6 sts. K15 (including st on needle after cast off). Cast off 18 sts. K15 (including st on needle after cast off). Cast off rem 6 sts.

First Earflap: With RS facing, rejoin MC to 15 sts. Working back and forth across 2 needles in rows, work 4 rows stocking st.

Next row: (RS). K1. K2tog. Knit to last 3 sts. ssk. K1.

Next row: Purl.

Rep last 2 rows 4 times more. 5 sts rem.

Next row: K1. K3tog. K1.

Next row: P3.

Next row: K3tog. Fasten off.

Second Earflap: Work as for First Earflap.

FINISHING

Crochet Edging: With RS facing and crochet hook, join B with sl st at center back. Ch 1. Work 1 rnd of sc evenly around lower edge of Hat and Earflaps working 3 sc in each point of Earflap. Join with sl st to first sc.

Braid Ties: Cut 12 lengths of B 22" [56 cm] long. Taking 6 strands tog, fold in half and knot into fringe at point of Earflap. Divide these strands into 3 groups (4 strands each). Braid into tie approx 8" [20.5 cm] long. Secure ends tightly. Trim ends evenly. Rep in rem Earflap.

Braid Tassel: Cut 12 lengths of B 15" [38 cm] long. Divide these strands into 3 groups (4 strands each). Braid into approx 12" [30.5 cm] length. Secure both ends tightly. Trim ends evenly. Attach center of Braid to top of Hat.

Diagram



Enlarge Diagram by 150%.
Trace onto back for embroidery.

Chart I - Back





Chart IV- Hat

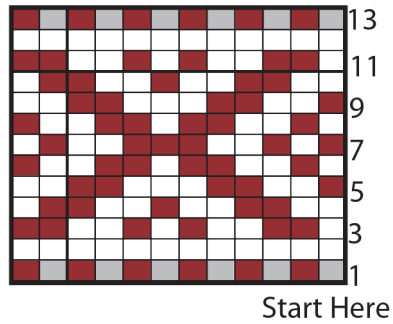
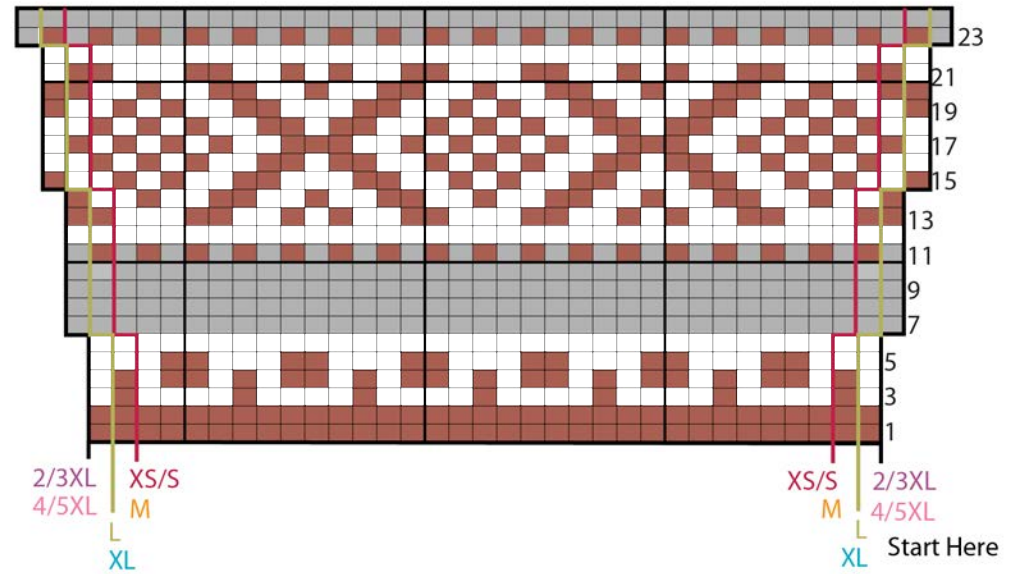


Chart III - Sleeve



Key

- = MC
- = Contrast A
- = Contrast B

