

BERNAT® WINTER WEEKEND KNIT HAT FOR HER



MATERIALS

Bernat® Super Value™ (7 oz/197 g; 426 yds/389 m)

Main Color (MC) Peony Pink (53417) **1 ball**

Contrast A Oatmeal (53010) **1 ball**

Sizes U.S. 7 (4.5 mm) and U.S. 8 (5 mm) circular knitting needles 16" [40.5 cm] long.
Set of four size U.S. 7 (5 mm) double-pointed knitting needles **or size needed to obtain gauge.** Stitch marker.

ABBREVIATIONS:

Approx = Approximate(ly)

Beg = Begin(ing)

Cont = Continue(ity)

Inc1 = Increase 1 stitch by knitting into front and back of next stitch.

K = Knit

K1tbl = Knit next stitch through back loop.

P = Purl

Rem = Remain(ing)

Rep = Repeat

Rnd(s) = Round(s)

St(s) = Stitch(es)

KNIT | SKILL LEVEL: INTERMEDIATE

SIZE

One size to fit average woman.

GAUGE

18 sts and 24 rows = 4" [10 cm] in stocking st with larger needles.

INSTRUCTIONS

With smaller needle and MC, cast on 86 sts. Join in rnd, placing marker on first st.

1st rnd: *K1tbl. P1. Rep from * around. Break MC. Join A.

With A, rep last rnd (K1tbl. P1) ribbing for 3" [7.5 cm].

Change to larger needle.

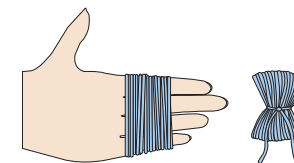
Next rnd: K3. Inc1. *K19. Inc1. Rep from * to last 3 sts. K3. 90 sts.

Work rnds 1 to 6 of Chart, reading rnds from right to left, noting 6 st rep will be worked 15 times.

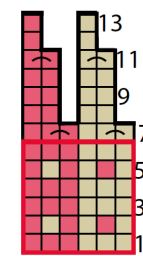
Rep rnds 1 to 6 of Chart until Hat from beg measures approx 7½" [19 cm].

Shape crown: Work rnds 7 to 13 of Chart, switching to larger set of double-pointed needles when appropriate. 30 sts rem. Break yarn, leaving a long end. Draw end tightly through rem loops and fasten securely.

Pom-pom: Wind MC around 4 fingers approx 90 times. Tie tightly in the middle, leaving a long end for attaching to Hat. Cut loops at both ends and trim to a smooth round shape. Sew to top of Hat.



CHART



KEY

- = Main Color (MC)
- = Contrast A
- = K2tog

6-st rep Start Here