

8. Snowdrift Cable Set

HAT



DOUBLE-POINTED
NEEDLES



BULKY



INTERMEDIATE

SCARF



BULKY



INTERMEDIATE

SIZES

Hat: One size to fit average lady's head.

Scarf: Approx 8" x 60" [20.5 x 152.5 cm].

GAUGES

Hat: 12 sts and 16 rows = 4" [10 cm] with 6.5 mm (U.S. 10½) needles in stocking st.

Scarf: 10 sts and 14 rows = 4" [10 cm] with 8 mm (U.S. 11) needles in stocking st.

MATERIALS

Bernat® Roving (100 g/3.5 oz; 109 m/120 yds)



HAT: 00332 (Orchid) **1 ball**

Set of four sizes 5.5 mm (U.S. 9) and 6.5 mm (U.S. 10½) double-pointed knitting needles **or size needed to obtain gauge.** Cable needle.



SCARF: 00332 (Orchid) **3 balls**

Size 8 mm (U.S. 11) knitting needles **or size needed to obtain gauge.** Cable needle.

ABBREVIATIONS

See page 50 for Helpful Hints.

Alt = Alternate(ing).

Beg = Beginning.

C8B = Slip next 4 stitches onto cable needle and leave at back of work. K4, then K4 from cable needle.

C8F = Slip next 4 stitches onto cable needle and leave at front of work. K4, then K4 from cable needle.

Cont = Continue(ity).

K = Knit.

K2tog = Knit next 2 stitches together.

M1 = Make 1 stitch by picking up horizontal loop lying before next stitch and knitting into back of loop.



Pat = Pattern.

Purl = Purl.

Rem = Remaining.

Rep = Repeat.

Rnd(s) = Round(s).

RS = Right side.

Ssk = Slip next 2 stitches knitwise one at a time. Pass them back onto left-hand needle, then knit through back loops together.

St(s) = Stitch(es).

WS = Wrong side.





INSTRUCTIONS

HAT

With 5.5 mm (U.S. 9) double-pointed needles, cast on 60 sts. Divide sts evenly on 3 needles. Join in rnd, placing a marker on first st.

1st rnd: *K2. P2. Rep from * around.

Rep last rnd 5 times more.

Next rnd: *(K1. M1) 3 times. K2. Rep from * around. 96 sts.

Change to larger needles and proceed in Cable Pat as follows:

See Chart IX on page 45.

1st and 2nd rnds: Knit.

3rd rnd: *C8F. K4. Rep from * around.

4th to 8th rnds: Knit.

9th rnd: *K4. C8B. Rep from * around.

10th to 12th rnds: Knit.

These 12 rnds form Cable Pat.

Rep last 12 rnds of Cable Pat once more.

Shape top: 1st rnd: *K2tog. K8. ssk. Rep from * around. 80 sts.

2nd and alt rnds: Knit.

3rd rnd: *K2tog. K6. ssk. Rep from * around. 64 sts.

5th rnd: *K2tog. K4. ssk. Rep from * around. 48 sts.

7th rnd: *K2tog. K2. ssk. Rep from * around. 32 sts.

9th rnd: *K2tog. ssk. Rep from * around. 16 sts.

Break yarn, leaving a long end. Draw end tightly through rem sts and fasten securely.

Pom-pom: Wind yarn around 4 fingers 50 times. Tie tightly in the middle and leave a long end for attaching to Hat. Cut loops at both ends and trim to smooth round shape. Sew Pom-pom to top of Hat.

SCARF

With 8 mm (U.S. 11) needles, cast on 16 sts. Knit 2 rows (garter st), noting first row is WS.

Next row: (WS). K1. *M1. K2. Rep from * to last st. M1. K1. 24 sts.

Proceed in Cable Pat as follows:

See Chart IX on page 45.

1st row: (RS). Knit.

2nd and alt rows: Purl.

3rd row: (C8F. K4) twice.

5th and 7th rows: Knit.

9th row: (K4. C8B) twice.

11th row: Knit.

12th row: Purl.

These 12 rows form Cable Pat.

Cont in Cable Pat as established until work from beg measures approx 60" [152.5 cm], ending with an 11th row of pat.

Next row: (WS). K1. *K1. K2tog. Rep from * to last 2 sts. K2. 17 sts.

Knit 1 row.

Cast off.

Pom-pom: (make 2). Make as given for Hat. Gather ends of Scarf and sew one Pom-pom to each end of Scarf. **BERNAT**

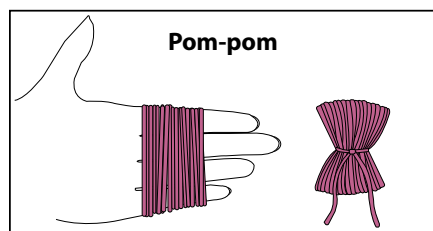
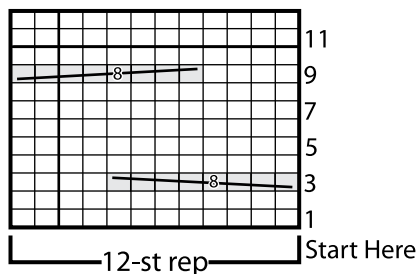


Chart IX



Key: Hat

□ = Knit.

= C8B

= C8F

Key: Scarf

□ = Knit on RS rows.

Purl on WS rows.

= C8B

= C8F

