







SIZE
One size to fit average woman's head.

MATERIALS

Bernat® Satin (100 g/3.5 oz; 182 m/200 yds)

| | | |
|---|--------------------------|---------------|
|  | 04531 (Rouge) | 1 ball |
| | OR | |
|  | 04609 (Goldenrod) | 1 ball |
| | OR | |
|  | 04246 (Foliage) | 1 ball |
| | OR | |
|  | 04203 (Teal) | 1 ball |

Set of four sizes 3.5 mm (U.S. 4) and 5 mm (U.S. 8) double-pointed knitting needles **or size needed to obtain gauge.**

GAUGE

18 sts and 24 rows = 4" [10 cm] with larger needles in stocking stitch.

ABBREVIATIONS

www.bernat.com/abbreviations

Alt = Alternate.

Beg = Beginning.

Cont = Continue(ity).

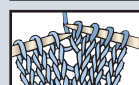
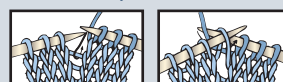
K = Knit.

K1tbl = Knit next stitch through back loop.

K2(3)tog = Knit next 2(3) stitches together.

K2togtbl = Knit next 2 stitches together through back loops.

M1 = Make one stitch by picking up horizontal loop lying before next stitch and knitting into back of loop.



P = Purl.

Pat = Pattern.

Pss0 = Pass slipped stitch over.

P2(3)tog = Purl next 2(3) stitches together.

Rem = Remaining.

Rep = Repeat.

Rnd(s) = Round(s).

Sl1 = Slip next stitch.

Sl1P = Slip next stitch purlwise.

Ssk = Slip next 2 stitches knitwise one at a time. Pass them back onto left-hand needle, then knit through back loops together

St(s) = Stitch(es).

Yo = Yarn over.

INSTRUCTIONS

With smaller needles, cast on 96 sts. Divide sts evenly on 3 needles. Join in rnd, placing a marker on first st.

1st rnd: *K1tbl. P1. Rep from * around.

Rep last rnd 5 times more.

Next rnd: *K1tbl. P1. (M1. K1tbl. P1) 3 times. M1. (K1tbl. P1) twice. Rep from * around. 128 sts.

Change to larger set of needles and proceed as follows (See Chart I on page 2):

1st rnd: *K1tbl. P1. ssk. K3. yo. K1. yo. K3. K2tog. P1. K1tbl. P1. Rep from * around.

2nd, 4th, 6th, 8th, 10th and 12th rnds: *K1tbl. P1. K11. P1. K1tbl. P1. Rep from * around.

3rd rnd: *K1tbl. P1. ssk. K2. yo. K3. yo. K2. K2tog. P1. K1tbl. P1. Rep from * around.

5th rnd: *K1tbl. P1. ssk. K1. yo. K5. yo. K1. K2tog. P1. K1tbl. P1. Rep from * around.

7th rnd: *K1tbl. P1. ssk. yo. K1. K2tog. yo. K1. yo. ssk. K1. yo. K2tog. P1. K1tbl. P1. Rep from * around.

9th rnd: *K1tbl. P1. ssk. yo. K2tog. yo. K3. yo. ssk. yo. K2tog. P1. K1tbl. P1. Rep from * around.

11th rnd: *K1tbl. P1. ssk. yo. K7. yo. K2tog. P1. K1tbl. P1. Rep from * around.

13th rnd: *yo. K3. K2tog. (P1. K1tbl) twice. P1. ssk. K3. yo. K1. Rep from * around.

14th, 16th, 18th, 20th and 22nd rnds: *K5. (P1. K1tbl) twice. P1. K6. Rep from * around.

15th rnd: *K1. yo. K2. K2tog. (P1. K1tbl) twice. P1. ssk. K2. yo. K2. Rep from * around.

17th rnd: *K2. yo. K1. K2tog. (P1. K1tbl) twice. P1. ssk. K1. yo. K3. Rep from * around.

19th rnd: *yo. ssk. K1. yo. K2tog. (P1. K1tbl) twice. P1. ssk. yo. K1. K2tog. yo. K1. Rep from * around.

21st rnd: *K1. yo. ssk. yo. K2tog. (P1. K1tbl) twice. P1. ssk. yo. K2tog. yo. K2. Rep from * around.

23rd rnd: *K3. yo. K2tog. (P1. K1tbl) twice. P1. ssk. yo. K4. Rep from * around.

24th rnd: As 14th rnd.

25th to 35th rnds: Rep 1st to 11th rnds once more.

Shape top: Next rnd: *K2togtbl. K11. P1. K2togtbl. Rep from * around. 112 sts.

Cont in pat as follows (See Chart II):

1st rnd: *yo. K2. K2tog. (P1. K1tbl) twice. P1. ssk. K2. yo. K1. Rep from * around.

2nd and alt rnds: *K4. (P1. K1tbl) twice. P1. K5. Rep from * around.

3rd rnd: *K1. yo. K1. K2tog. (P1. K1tbl) twice. P1. ssk. K1. yo. K2. Rep from * around.

5th rnd: *K2. yo. K2tog. (P1. K1tbl) twice. P1. ssk. yo. K3. Rep from * around.

7th to 11th rnds: As 1st to 5th rnds.

12th rnd: *K4. (K2togtbl) twice. P1. K5. Rep from * around. 96 sts.

13th rnd: *K1tbl. P1. ssk. (K1. yo) twice. K1. K2tog. P1. K1tbl. P1. Rep from * around.

14th rnd: *K1tbl. P1. K7. P1. K1tbl. P1. Rep from * around.

15th rnd: *K1tbl. P1. ssk. yo. K3. yo. K2tog. P1. K1tbl. P1. Rep from * around.

16th rnd: As 14th rnd.

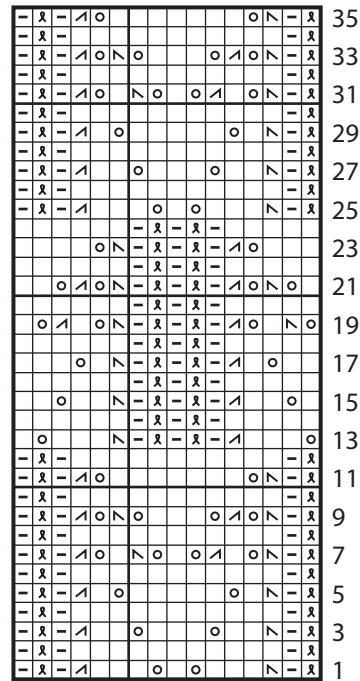
17th rnd: *K1tbl. P1. ssk. K3. K2tog. P1. K1tbl. P1. Rep from * around. 80 sts.

18th rnd: *K1tbl. P1. K5. P1. K1tbl. P1. Rep from * around to last 3 sts. Slip last 3 sts from third needle onto beg of first needle. Chart II is complete.

19th rnd: *P1. Sl1. K2tog. pss0. P1. ssk. K1. K2tog. Rep from * around. 48 sts.

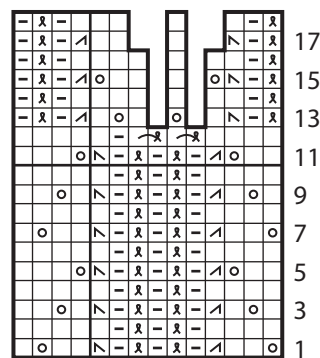
20th rnd: *P3tog. K3tog. Rep from * around. 16 sts. Break yarn, leaving a long end. Draw end tightly through rem sts and fasten securely.

CHART I



Start Here

CHART II



Start Here

KEY

- = K1
- = P1
- = yo
- = K2togtbl
- = K1tbl
- = ssk
- = K2tog