



KNIT | SKILL LEVEL: **INTERMEDIATE**

## ABBREVIATIONS

**Alt** = Alternate(ing)

**Approx** = Approximately

**K** = Knit

**K2tog** = Knit next 2 stitches together

**P** = Purl

**P2sso** = Pass 2 slipped stitches over

**Pat** = Pattern

**Rep** = Repeat

**Rnd(s)** = Round(s)

**RS** = Right side

**Sl2K** = Slip next 2 stitches knitwise

**Ssk** = Slip next 2 stitches knitwise one at a time. Pass them back onto left-hand needle, then knit through back loops together

**St(s)** = Stitch(es)

**WS** = Wrong side

**Yo** = Yarn over

## MEASUREMENTS

Approx 50" [127 cm] wide x 29" [73.5 cm] long. One size fits all.

## GAUGE

9 sts and 18 rows = 4" [10 cm] in Garter Lace Pat.

## INSTRUCTIONS

### FRONT

\*\*With longer needle, cast on 114 sts. **Do not** join. Working back and forth across needle in rows, proceed as follows:

**1st row:** (RS). K2. \*P2. K2. Rep from \* to end of row.

**2nd row:** P2. \*K2. P2. Rep from \* to end of row. Rep these 2 rows (K2. P2) ribbing 3 times more.

**Set up Lace Pat: Next row:** (RS). K56. K2tog. K56. 113 sts. (See diagram on page 3).

Proceed in Lace Pat:

**1st and alt rows:** (WS). Knit.

**2nd row:** K6. \*K2tog. yo. K1. yo. ssk. K11. Rep from \* to last 11 sts. K2tog. yo. K1. yo. ssk. K6.

**4th row:** K5. \*K2tog. yo. K3. yo. ssk. K9. Rep from \* to last 12 sts. K2tog. yo. K3. yo. ssk. K5.

## MATERIALS

**Bernat® Roving™** (3.5 oz/100 g; 120 yds/109 m) Raspberry (00435) **11 balls**

Size U.S. 11 [8 mm] circular knitting needles 36" [91.5 cm] long and 16" [40.5 cm] long **or size needed to obtain gauge.** Spare needle. Stitch marker.

**6th row:** K4. \*K2tog. yo. K5. yo. ssk. K7. Rep from \* to last 13 sts. K2tog. yo. K5. yo. ssk. K4.

**8th row:** K3. \*K2tog. yo. K7. yo. ssk. K5. Rep from \* to last 14 sts. K2tog. yo. K7. yo. ssk. K3.

**10th row:** K2. \*K2tog. yo. K9. yo. ssk. K3. Rep from \* to last 15 sts. K2tog. yo. K9. yo. ssk. K2.

**12th row:** K1. \*K2tog. yo. K11. yo. ssk. K1. Rep from \* to end of row.

**14th row:** K2tog. \*yo. K13. yo. Sl2K. K1. p2sso. Rep from \* to last 15 sts. yo. K13. yo. ssk.

**16th row:** K1. \*yo. ssk. K11. K2tog. yo. K1. Rep from \* to end of row.

**18th row:** K2. \*yo. ssk. K9. K2tog. yo. K3. Rep from \* to last 15 sts. yo. ssk. K9. K2tog. yo. K2.

**20th row:** K3. \*yo. ssk. K7. K2tog. yo. K5. Rep from \* to last 14 sts. yo. ssk. K7. K2tog. yo. K3.

**22nd row:** K4. \*yo. ssk. K5. K2tog. yo. K7. Rep from \* to last 13 sts. yo. ssk. K5. K2tog. yo. K4.

**24th row:** K5. \*yo. ssk. K3. K2tog. yo. K9. Rep from \* to last 12 sts. yo. ssk. K3. K2tog. yo. k5.

**26th row:** K6. \*yo. ssk. K1. K2tog. yo. K11. Rep from \* to last 11 sts. yo. ssk. K1. K2tog. yo. K6.

**28th row:** K7. \*yo. Sl2K. K1. p2sso. yo. K13. Rep from \* to last 10 sts. yo. Sl2K. K1. p2sso. yo. K7.

These 28 rows form Garter Lace Pat.\*\*

Rep these 28 rows 3 times more.

**Shape left neck: 1st row:** (WS). K50 and place these sts on spare needle for right neck. Cast off center 13 sts. K50.

**2nd row:** K6. (K2tog. yo. K1. yo. ssk. K11) twice. K2tog. yo. K1. yo. ssk. K3. K2tog. K2. 49 sts.

**3rd and alt rows:** Knit.

**4th row:** K5. (K2tog. yo. K3. yo. ssk. K9) twice. K2tog. yo. K3. yo. ssk. K1. K2tog. K2. 48 sts.

**6th row:** K4. (K2tog. yo. K5. yo. ssk. K7) twice. K2tog. yo. K6. K2tog. K2. 47 sts.

**8th row:** K3. (K2tog. yo. K7. yo. ssk. K5) twice. K2tog. yo. K6. K2tog. K2. 46 sts.

**10th row:** K2. (K2tog. yo. K9. yo. ssk. K3) twice. K2tog. yo. K6. K2tog. K2. 45 sts.

Cast off knit-wise.

**Shape right neck:** With RS facing, rejoin yarn to 50 sts on spare needle.

**1st row:** K2. ssk. K3. (K2tog. yo. K1. yo. ssk. K11) twice. K2tog. yo. K1. yo. ssk. K6. 49 sts.

**2nd and alt rows:** Knit.

**3rd row:** K2. ssk. K1. (K2tog. yo. K3. yo. ssk. K9) twice. K2tog. yo. K3. yo. ssk. K5. 48 sts.

**5th row:** K2. ssk. K6. (yo. ssk. K7. K2tog. yo. K5) twice. yo. ssk. K4. 47 sts.

**7th row:** K2. ssk. K6. (yo. ssk. K5. K2tog. yo. K7) twice. yo. ssk. K3. 46 sts.

**9th row:** K2. ssk. K6. (yo. ssk. K3. K2tog. yo. K9) twice. yo. ssk. K2. 45 sts.

Cast off knitwise.

## BACK

Work from \*\* to \*\* as given for Front.

Cont in Garter Lace Pat until Back measures same length as Front to shoulder, ending on a RS row.

Cast off knitwise.

## FINISHING

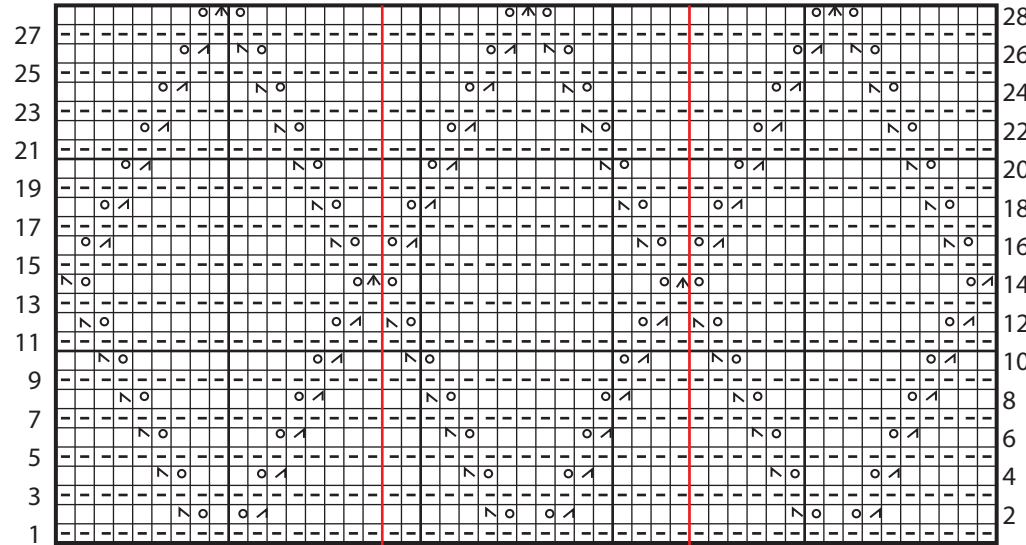
Sew shoulder seams.

**Collar:** With shorter needle and RS facing, pick up and knit 52 sts evenly around neck opening. Join in rnd, placing marker on first st.

**1st rnd:** \*K2. P2. Rep from \* around.

Rep last rnd until Collar measures 8" [20.5 cm]. Cast off in ribbing.

Garter Lace Chart



Start Here

16-st rep

Key

- ☐ = Knit on RS rows. Purl on WS rows
- ◻ = Purl on RS rows. Knit on WS rows.
- ⊙ = yo
- ⊠ = ssk
- ⊡ = K2tog
- ⊞ = Sl2K. K1. p2sso.

