



**BERNAT® SUPER VALUE
QUIT SMOKING/QUIT SWEARING JAR COZIES
(TO CROCHET)**

MEASUREMENTS

To fit standard 1 quart [1 litre] canning jar.

GAUGE

15 sc and 16 rows = 4 ins [10 cm]

MATERIALS

Bernat® Super Value (197 g/7 oz; 389 m/426 yds)

Quit Smoking Version

Main Color (MC) (07391 White) **1 ball**

Contrast A (00607 Berry) **1 ball**

Quit Swearing Version

Main Color (MC) (00607 Berry) **1 ball**

Size 4 mm (U.S. G or 6) crochet hook **or size needed to obtain gauge.** **Quit Smoking Version:** Small amount of 07421 (Black) as B. Glue. **Quit Swearing Version:** Small amount of 07421 (Black) as B for embroidery.

ABBREVIATIONS: www.bernat.com/abbreviations

INSTRUCTIONS

Cozy (both versions alike)

With MC, ch 12. Join with sl st to form ring.

1st rnd: Ch 1. 24 sc in ring. Join with sl st to first sc.

2nd rnd: Ch 1. *2 sc in next sc. 1 sc in each of next 3 sc. Rep from * around. Join with sl st to first sc. 30 sc.

3rd rnd: Ch 1. *1 sc in each of next 2 sc. 2 sc in next sc. 1 sc in each of next 2 sc. Rep from * around. Join with sl st to first sc. 36 sc.



4th rnd: Ch 1. *2 sc in next sc. 1 sc in each of next 5 sc. Rep from * around. Join with sl st to first sc. 42 sc.

5th rnd: Ch 1. *1 sc in each of next 3 sc. 2 sc in next sc. 1 sc in each of next 3 sc. Rep from * around. Join with B with sl st to first sc. 48 sc.

6th rnd: Ch 1. *2 sc in next sc. 1 sc in each of next 7 sc. Rep from * around. Join with sl st to first sc. 54 sc.

7th rnd: Ch 1. *Working in back loops only*, 1 sc in each sc around. Join with sl st to first sc.

8th rnd: Ch 1. *Working in both loops*, 1 sc in each sc around. Join with sl st to first sc.

Rep last rnd until work from 7th rnd measures 7 ins [18 cm]. Fasten off.

Quit Smoking Version: “No Smoking” Sign

With MC, ch 2.

1st rnd: 8 sc in 2nd ch from hook. Join with sl st to first sc. 8 sc.

2nd rnd: Ch 1. 2 sc in each sc around. Join with sl st to first sc. 16 sc.

3rd rnd: Ch 1. *2 sc in next sc. 1 sc in next sc. Rep from * around. Join with sl st to first sc. 24 sc.

4th rnd: Ch 1. *2 sc in next sc. 1 sc in each of next 2 sc. Rep from * around. Join with sl st to first sc. 32 sc.

5th rnd: Ch 1. *2 sc in next sc. 1 sc in each of next 3 sc. Rep from * around. Join with sl st to first sc. 40 sc.

6th rnd: Ch 1. *1 sc in each of next 2 sc. 2 sc in next sc. 1 sc in each of next 2 sc. Rep from * around. Join with sl st to first sc. 48 sc.

7th rnd: Ch 1. *2 sc in next sc. 1 sc in each of next 5 sc. Rep from * around. Join with sl st to first sc. 56 sc.

8th rnd: Ch 1. *1 sc in each of next 3 sc. 2 sc in next sc. 1 sc in each of next 3 sc. Rep from * around. Join with A with sl st to first sc. 64 sc.

9th rnd: With A, ch 3 (counts as dc). 1 dc in next sc. *1 dc in each of next 3 sc. 2 dc in next sc. Rep from * to last 2 sc. 1 dc in each of last 2 sc. Join with sl st to top of ch 3. Fasten off.

Strike Bar

With A, ch 21.

1st row: 1 dc in 4th ch from hook. 1 dc in each ch to end of ch.
Fasten off.

Cigarette

With B, ch 15.

1st row: 1 hdc in 3rd ch from hook. 1 hdc in each ch to end of ch.
Fasten off.

Finishing

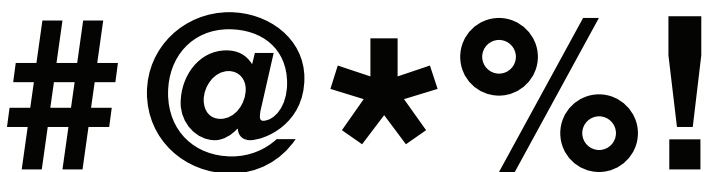
Quit Smoking Version

Glue Cigarette to Sign. Cut 2 lengths of B to same height as Cigarette and glue to Sign as seen in picture. Cut 2 more lengths of B 1 inch [2.5 cm] and 2½ ins [6 cm] and glue to Sign in smoke formation as seen in picture. Sew Strike Bar to Sign as seen in picture. Sew Sign to Jar Cuff.

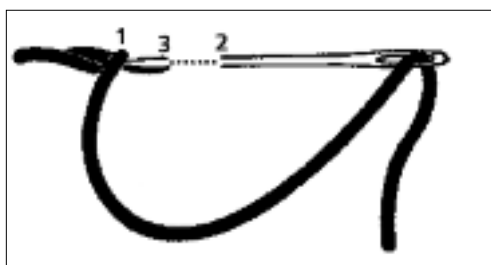
Quit Swearing Version

With black yarn, embroider symbols with outline stitch as in diagram.

Diagram



Outline Stitch



P.O. Box 40, Listowel ON N4W 3H3
"home style... life style... your style."