



CROCHET | SKILL LEVEL: **EASY**

## ABBREVIATIONS

**Alt** = Alternate  
**Beg** = Beginning  
**Ch** = Chain(s)  
**Cont** = Continue(ity)  
**Dec** = Decrease(ing)  
**PM** = Place marker  
**Rem** = Remain(ing)  
**Rep** = Repeat

**Rnd(s)** = Round(s)  
**Sc** = Single crochet  
**Sc2tog** = Draw up a loop in each of next 2 sts. Yoh and draw through all loops on hook.  
**Sl st** = Slip stitch

**St(s)** = Stitch(es)  
**Tog** = Together  
**Yoh** = Yarn over hook

## MEASUREMENTS

Approx 18" x 24" [45.5 x 61 cm], excluding legs.

## GAUGE

9 sc and 9 rows = 4" [10 cm].

## INSTRUCTIONS

**Note:** Join all rnds with sl st to first sc at end of each rnd.

**Beg at top of Head:** With A, ch 4. Join with sl st to first ch to form ring.

**1st rnd:** Ch 1. 10 sc in ring. Join. 10 sc.

**2nd rnd:** Ch 1. 2 sc in each sc around. Join. 20 sc.

**3rd rnd:** Ch 1. 1 sc in each sc around. Join.

**4th rnd:** Ch 1. 2 sc in first sc. 1 sc in next sc. \*2 sc in next sc. 1 sc in next sc. Rep from \* around. Join. 30 sc.

**5th rnd:** As 3rd rnd.

**6th rnd:** Ch 1. 2 sc in first sc. 1 sc in each of next 2 sc. \*2 sc in next sc. 1 sc in each of next 2 sc. Rep from \* around. Join. 40 sc.

**7th to 12th rnds:** As 3rd rnd.

**13th rnd:** Ch 1. \*Sc2tog. 1 sc in each of next 2 sc. Rep from \* around. Join. 30 sts.

**14th rnd:** Ch 1. 1 sc in each st around. Join.

## MATERIALS

**Bernat® Blanket™** (10.5 oz/300 g; 220 yds/201 m)

**Contrast A** Vintage White (10006)      **2 balls or 400 yds/366 m**

**Bernat® Blanket Brights™** (10.5 oz/300 g; 220 yds/201 m)

**Contrast B** Carrot Orange (12002)      **1 ball or 172 yds/157 m**

Size U.S. K/10.5 (6.5 mm) Susan Bates® Silvalume® crochet hook **or size needed to obtain gauge.** Susan Bates® yarn needle. Small amount of black worsted weight yarn for eye embroidery OR 1 set safety eyes 12 mm diameter. Polyester fiberfil. 2 Susan Bates® split-lock stitch markers.

**Next rnd:** (Neck Dec). Ch 1. 1 sc in each of next 5 sc. (Sc2tog) 10 times. Place split-lock stitch marker between 5th and 6th Sc2tog's just worked to mark center front. 1 sc in each of last 5 sc. Join. 20 sts.

**Next rnd:** Ch 1. 1 sc in each st around. Join.

Rep last rnd until neck measures 8" [20.5 cm]. **Do not** fasten off at end of last rnd.

## BODY

See diagrams on page 4.

**1st rnd:** Ch 28. 2 sc in 2nd ch from hook. 1 sc in each ch to end of chain. (28 sc just worked into ch). 1 sc in each of next 20 sc of neck. *Working into rem loop of foundation ch-28*, 1 sc in each rem ch of next 26 ch. 2 sc in last ch (there will be a total of 4 sc in last ch). Join. 76 sc.

**2nd rnd:** Ch 1. 1 sc in each of first 37 sc. 2 sc in each of next 2 sc. 1 sc in each of last 37 sc. Join. 78 sc.

**3rd rnd:** Ch 1. 1 sc in each sc around. Join.

**4th rnd:** Ch 1. 1 sc in each of next 38 sc. 2 sc in next sc. PM on last sc just worked to mark center front. 2 sc in next sc. 1 sc in each of last 38 sc. Join. 80 sc.

**5th to 8th rnds:** Ch 1. 1 sc in each sc around. Join.

**Shape Tail: 1st rnd:** Ch 1. Sc2tog. 1 sc in each sc to last 2 sc. Sc2tog. Join. 78 sts.

**2nd rnd:** Ch 1. 1 sc in each st around. Join.

**3rd to 6th rnds:** Rep last 2 rnds twice more. 74 sts.

**Shape Tail and Belly: 1st rnd:** Ch 1. Sc2tog. 1 sc in each of next 33 sc. (Sc2tog) twice. 1 sc in each of next 33 sc. Sc2tog. Join. 70 sts. See diagram on page 5.

**2nd and alt rnds:** Ch 1. 1 sc in each st around. Join.

**3rd rnd:** Ch 1. Sc2tog. 1 sc in each of next 31 sc. (Sc2tog) twice. 1 sc in each sc to last 2 sc. Sc2tog. Join. 66 sts.

**5th rnd:** Ch 1. Sc2tog. 1 sc in each of next 29 sc. (Sc2tog) twice. 1 sc in each sc to last 2 sc. Sc2tog. Join. 62 sts.

**7th rnd:** Ch 1. Sc2tog. 1 sc in each of next 27 sc. (Sc2tog) twice. 1 sc in each sc to last 2 sc. Sc2tog. Join. 58 sts.

**9th rnd:** Ch 1. Sc2tog. 1 sc in each of next 25 sc. (Sc2tog) twice. 1 sc in each sc to last 2 sc. Sc2tog. Join. 54 sts.

**11th rnd:** Ch 1. Sc2tog. 1 sc in each of next 21 sc. (Sc2tog) twice. 1 sc in each sc to last 2 sc. Sc2tog. Join. 50 sts.

**12th rnd:** As 2nd rnd. Fasten off leaving a long end to sew bottom closed.

## BEAK

With B, ch 5.

See diagram on page 5.

**1st rnd:** 2 sc in 2nd ch from hook. 1 sc in each of next 2 ch. 3 sc in last ch. *Working into rem loops of foundation chain*, 1 sc in each of next 2 ch. 1 sc in last ch (same ch as beg 2 sc). Join. 10 sc.

**2nd rnd:** Ch 1. 1 sc in first sc. 2 sc in next sc. 1 sc in each of next 2 sc. 2 sc in next sc. 1 sc in next sc. 2 sc in next sc. 1 sc in each of next 2 sc. 2 sc in last sc. Join. 14 sc.

**3rd rnd:** Ch 1. 1 sc in each sc around. Join.

**4th rnd:** Ch 1. 1 sc in first sc. 2 sc in next sc. 1 sc in each of next 4 sc. 2 sc in next sc. 1 sc in next sc. 2 sc in next sc. 1 sc in each sc to last sc. 2 sc in last sc. Join. 18 sc.

**5th rnd:** As 3rd rnd.

**6th rnd:** Ch 1. 2 sc in first sc. 1 sc in each of next 8 sc. 2 sc in next sc. 1 sc in each sc to end of rnd. Join. 20 sc.

**7th rnd:** As 3rd rnd. Fasten off, leaving a long end to sew Beak to Head.

## LEGS

With B, ch 12. Join with sl st to form a ring. See diagram on page 5.

**1st rnd:** Ch 1. 1 sc in each ch around. 12 sc. **Do not** join. PM for beg of rnd.

Working in spiral, 1 sc in each sc around until Leg measures approx 10" [25.5 cm]. **Do not** fasten off.

**Close bottom of Leg:** Fold Leg flat, having 1st sc at side of fold. Ch 1. *Working through both thicknesses*, 1 sc in each of next 6 sc. **Do not** fasten off. Turn.

**Foot: 1st row:** Ch 1. 2 sc in first sc. 1 sc in each of next 4 sc. 2 sc in last sc. Turn. 8 sc.

**2nd row:** Ch 1. 1 sc in each sc to end of row. Turn.

**3rd row:** Ch 1. 2 sc in first sc. 1 sc in each sc to last sc. 2 sc in last sc. Turn. 10 sc.

**4th and 5th rows:** Rep 2nd and 3rd rows once more. 12 sc.

**6th to 9th rows:** Ch 1. 1 sc in each sc to end of row. Turn. Fasten off.

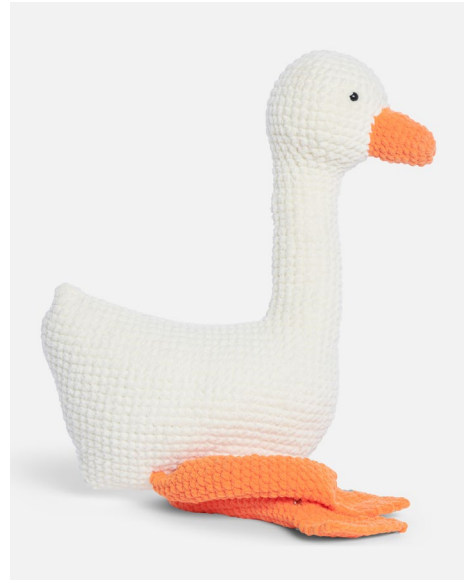
## FINISHING

**Note:** Safety eyes cannot be moved once they are properly attached, so it's best to make you like eye placement using stitch markers before inserting them.

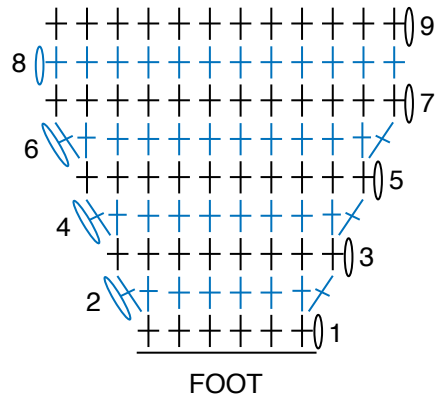
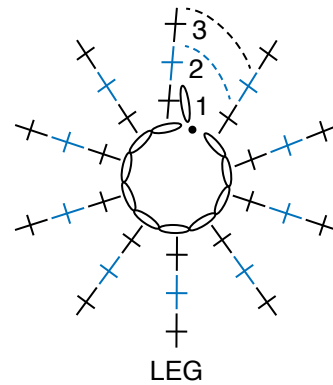
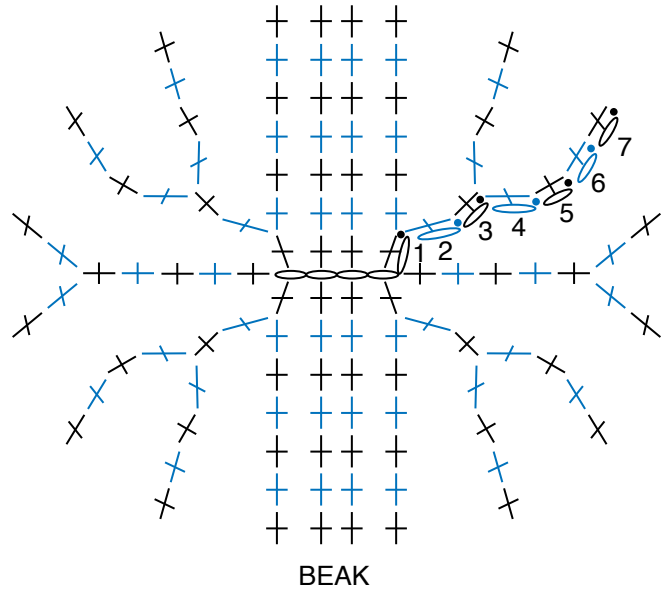
Lay Head flat along center front. Place stitch markers on either side, approx 3½" [9 cm] down from top of Head and 3" [7.5 cm] in from center front to mark eye placement.

Stuff Beak lightly. Pin Beak to front of Head, between eye markers to check eye placement. Adjust markers as desired. Following manufacturer's instructions, attach Safety Eyes at markers. Stuff Head, Neck and Body, being sure not to overstuff. Sew Beak in position. Sew bottom seam of Body.

Stuff Legs lightly. Using yarn tail, sew top of Leg closed and attach to Body at center bottom. Weave in ends.







- STITCH KEY**
- = chain (ch)
  - = slip stitch (sl st)
  - † = single crochet (sc)
  - △ = single crochet 2 together (sc2tog)

