



CROCHET | SKILL LEVEL: **EASY**

ABBREVIATIONS

Approx = Approximately

Ch = Chain(s)

RS = Right side

Sc = Single crochet

Scbl = Single crochet in back loop only of next stitch

Scfl = Single crochet in front loop only of next stitch

Tog = Together

MEASUREMENTS

Approx 37½" [95.5 cm] wide x 40½" [103 cm] long.

GAUGE

3.5 sc and 3.5 rows = 4" [10 cm] with Bernat® Blanket Bold™.

INSTRUCTIONS

With MC, ch 26.

See chart on page 2.

1st row: (RS). 1 sc in 2nd ch from hook. 1 sc in each ch to end of chain. Turn. 25 sc.

2nd row: Ch 1. 1 sc in each sc to end of row. Turn.

3rd row: Ch 1. 1 sc in each of first 6 sc. 1 scbl in next sc. 1 sc in each of next 2 sc. 1 scbl in next sc. 1 sc in each of next 5 sc. 1 scbl in next sc. 1 sc in each of next 2 sc. 1 scbl in next sc. 1 sc in each of last 6 sc. Turn.

4th row: Ch 1. 1 sc in each of first 5 sc. 1 scfl in next sc. 1 sc in each of next 2 sc. 1 scfl in next sc. 1 sc in each of next 7 sc. 1 scfl in next sc. 1 sc in each of next 2 sc. 1 scfl in next sc. 1 sc in each of last 5 sc. Turn.

5th row: Ch 1. 1 sc in each of first 4 sc. 1 scbl in next sc. 1 sc in each of next 2 sc. 1 scbl in next sc. 1 sc in each of next 9 sc. 1 scbl in next sc. 1 sc in each of next 2 sc. 1 scbl in next sc. 1 sc in each of last 4 sc. Turn.

MATERIALS

Bernat® Blanket Bold™ (10.5 oz/300 g; 29 yds/27 m)

Main Color (MC) Gravel (65004) **8 balls**

Bernat® Sheepy™ (8.8 oz/250g; 149 yds /136 m)

Contrast A Vapor Gray (63008) **1 ball**

Size U.S. U/50 (25 mm) crochet hook **or size needed to obtain gauge.**

6th row: Ch 1. 1 sc in each of first 3 sc. 1 scfl in next sc. 1 sc in each of next 2 sc. 1 scfl in next sc. 1 sc in each of next 11 sc. 1 scfl in next sc. 1 sc in each of next 2 sc. 1 scfl in next sc. 1 sc in each of last 3 sc. Turn.

7th row: Ch 1. 1 sc in each of first 2 sc. 1 scbl in next sc. 1 sc in each of next 2 sc. 1 scbl in next sc. 1 sc in each of next 13 sc. 1 scbl in next sc. 1 sc in each of next 2 sc. 1 scbl in next sc. 1 sc in each of last 2 sc. Turn.

8th row: Ch 1. 1 sc in first sc. 1 scfl in next sc. 1 sc in each of next 2 sc. 1 scfl in next sc. 1 sc in each of next 7 sc. 1 scfl in next sc. 1 sc in each of next 7 sc. 1 scfl in next sc. 1 sc in each of next 2 sc. 1 scfl in next sc. 1 sc in last sc. Turn.

9th row: Ch 1. 1 sc in each of first 3 sc. 1 scbl in next sc. 1 sc in each of next 7 sc. 1 scbl in next sc. 1 sc in next sc. 1 scbl in next sc. 1 sc in each of next 7 sc. 1 scbl in next sc. 1 sc in each of last 3 sc. Turn.

10th row: Ch 1. 1 sc in each of first 2 sc. 1 scfl in next sc. 1 sc in each of next 7 sc. 1 scfl in next sc. 1 sc in each of next 3 sc. 1 scfl in next sc. 1 sc in each of next 7 sc. 1 scfl in next sc. 1 sc in each of last 2 sc. Turn.

11th row: Ch 1. 1 sc in first sc. 1 scbl in next sc. 1 sc in each of next 7 sc. 1 scbl in next sc. 1 sc in each of next 5 sc. 1 scbl in next sc. 1 sc in each of next 7 sc. 1 scbl in next sc. 1 sc in last sc. Turn.

12th row: Ch 1. 1 sc in each of first 8 sc. 1 scfl in next sc. 1 sc in each of next 7 sc. 1 scfl in next sc. 1 sc in each of last 8 sc. Turn.

13th row: Ch 1. 1 sc in each of first 7 sc. 1 scbl in next sc. 1 sc in each of next 9 sc. 1 scbl in next sc. 1 sc in each of last 7 sc. Turn.

14th row: Ch 1. 1 sc in each of first 6 sc. 1 scfl in next sc. 1 sc in each of next 11 sc. 1 scfl in next sc. 1 sc in each of last 7 sc. Turn.

15th row: Ch 1. 1 sc in each of first 5 sc. 1 scbl in next sc. 1 sc in each of next 13 sc. 1 scbl in next sc. 1 sc in each of last 5 sc. Turn.

16th row: As 14 row.

17th row: As 13th row.

18th row: As 12th row.

19th row: As 11th row.

20th row: As 10th row.

21st row: As 9th row.

22nd row: As 8th row.

23rd row: As 7th row.

24th row: As 6th row.

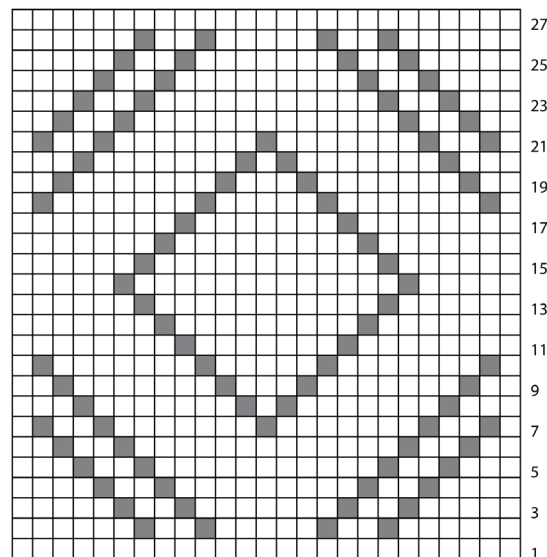
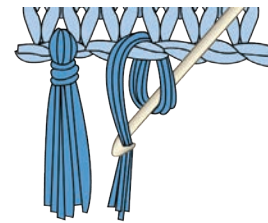
25th row: As 5th row.

26th row: As 4th row.

27th row: As 3rd row. Fasten off.

Fringe

Cut lengths of A 8" [20.5 cm] long. Taking 4 strands tog, fold in half and knot into fringe in each skipped front loop on RS of Blanket as shown in Fringe Diagram. Trim fringe to 3" [7.5 cm].



CHART

KEY

- = Front loop fringe
- = Single crochet (sc)